

the floorplan...



TOTAL FLOOR AREA: 1138 sq.ft. (105.7 sq.m.) approx.
Whilst every attempt has been made to ensure the accuracy of the floorplan contained here, measurements of doors, windows, rooms and any other items are approximate and no responsibility is taken for any error, omission or mis-statement. This plan is for illustrative purposes only and should be used as such by any prospective purchaser. The services, systems and appliances shown have not been tested and no guarantee as to their operability or efficiency can be given.
Made with Metropix ©2020

more details from...

call: Brian Cox Harrow: 0208 912 0006
email: bradley.grant@brian-cox.co.uk
web: www.brian-cox.co.uk



0208 912 0006
brian-cox.co.uk



Brian Cox of Harrow are delighted to offer this completely refurbished, three bed first floor maisonette which benefits from a large private rear garden and off street parking to the front. Located within a short walk to Harrow on the Hill station and shopping centre yet set far enough back to enjoy the peace and quiet that Welldon Crescent offers. This property will attract a high level of interest due to the internal condition and location.



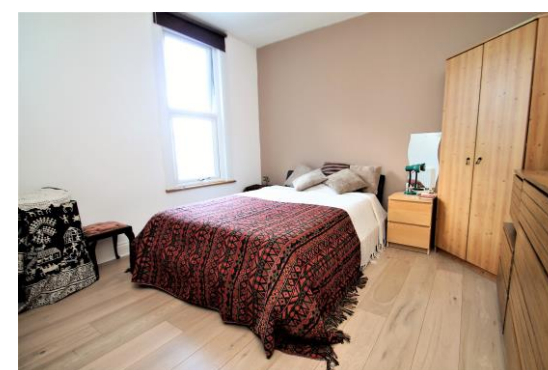
£450,000
Share of Freehold

Welldon Crescent, Harrow HA1 1QP



in brief...

- Newly Refurbished
- Three Bedrooms
- off Street Parking
- Rear Garden
- Five Minute Walk to Town Centre
- First Floor Maisonette



the location...

nearest stations ...

Harrow-on-the-Hill (0.3 miles)
Harrow & Wealdstone (0.6 miles)
West Harrow (0.8 miles)

Harrow is a large suburban town in the London Borough of Harrow, North West London, England. It is centred 10.5 miles (16.9 km) North West of Charing Cross.

Harrow has two large shopping centres which are St Anns and St Georges with its many shops, restaurants, cafes and cinema.

There are many local schools in the area some of these include Norbury School, Marlborough Primary School, St Anselm's Catholic Primary School and Elmgrove Primary School which all have a good or higher Ofsted report.