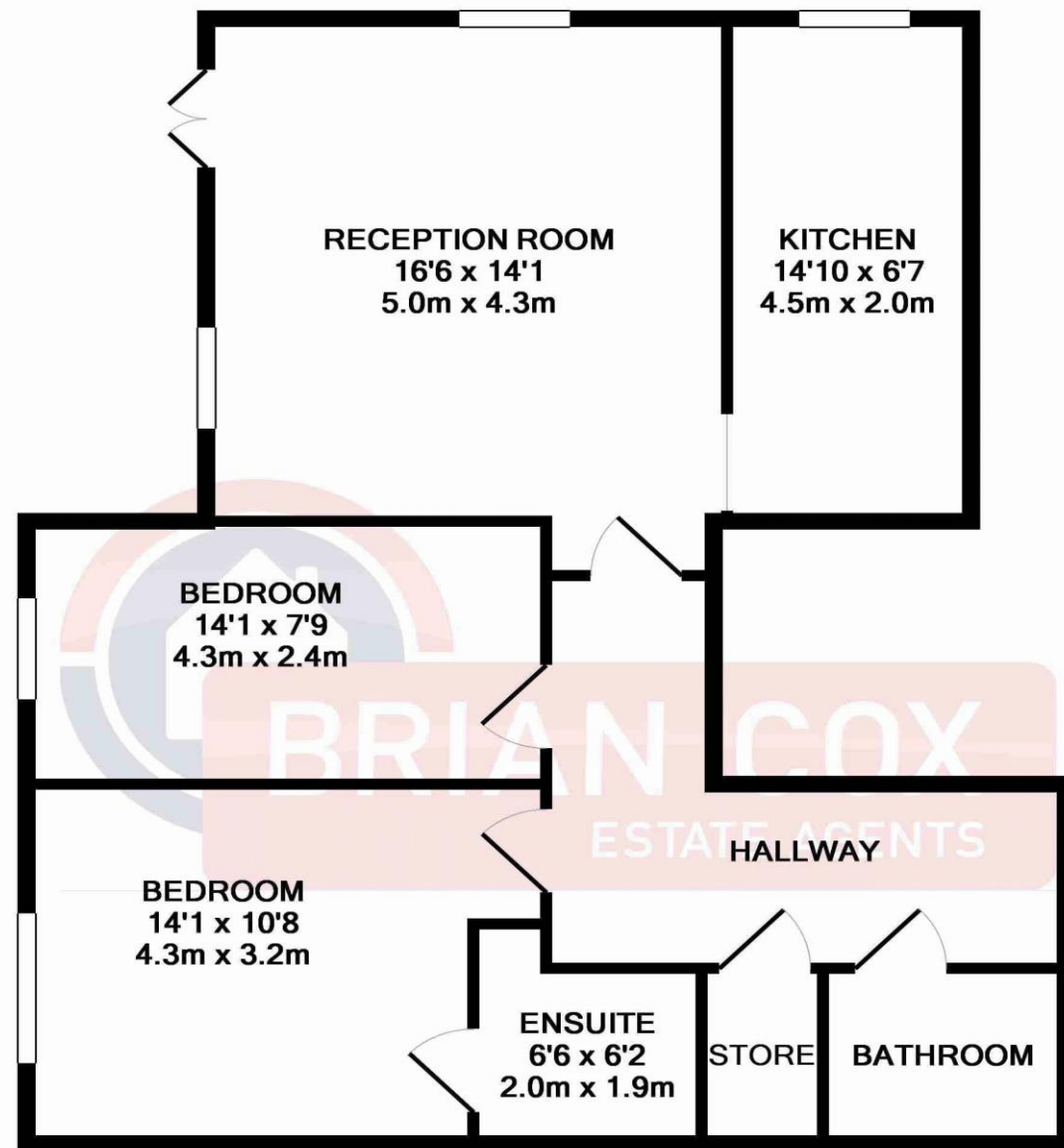


the floorplan...



TOTAL APPROX. FLOOR AREA 750 SQ.FT. (69.7 SQ.M.)

Whilst every attempt has been made to ensure the accuracy of the floor plan contained here, measurements of doors, windows, rooms and any other items are approximate and no responsibility is taken for any error, omission, or mis-statement. This plan is for illustrative purposes only and should be used as such by any prospective purchaser. The services, systems and appliances shown have not been tested and no guarantee as to their operability or efficiency can be given
Made with Metropix ©2015

more details from...

call: **Brian Cox Harrow: 0208 912 0006**

email: Kasru.ali@brian-cox.co.uk

web: www.brian-cox.co.uk



0208 912 0006
brian-cox.co.uk



GROUND FLOOR APARTMENT - TWO DOUBLE BEDROOMS - TWO BATHROOMS - PARKING

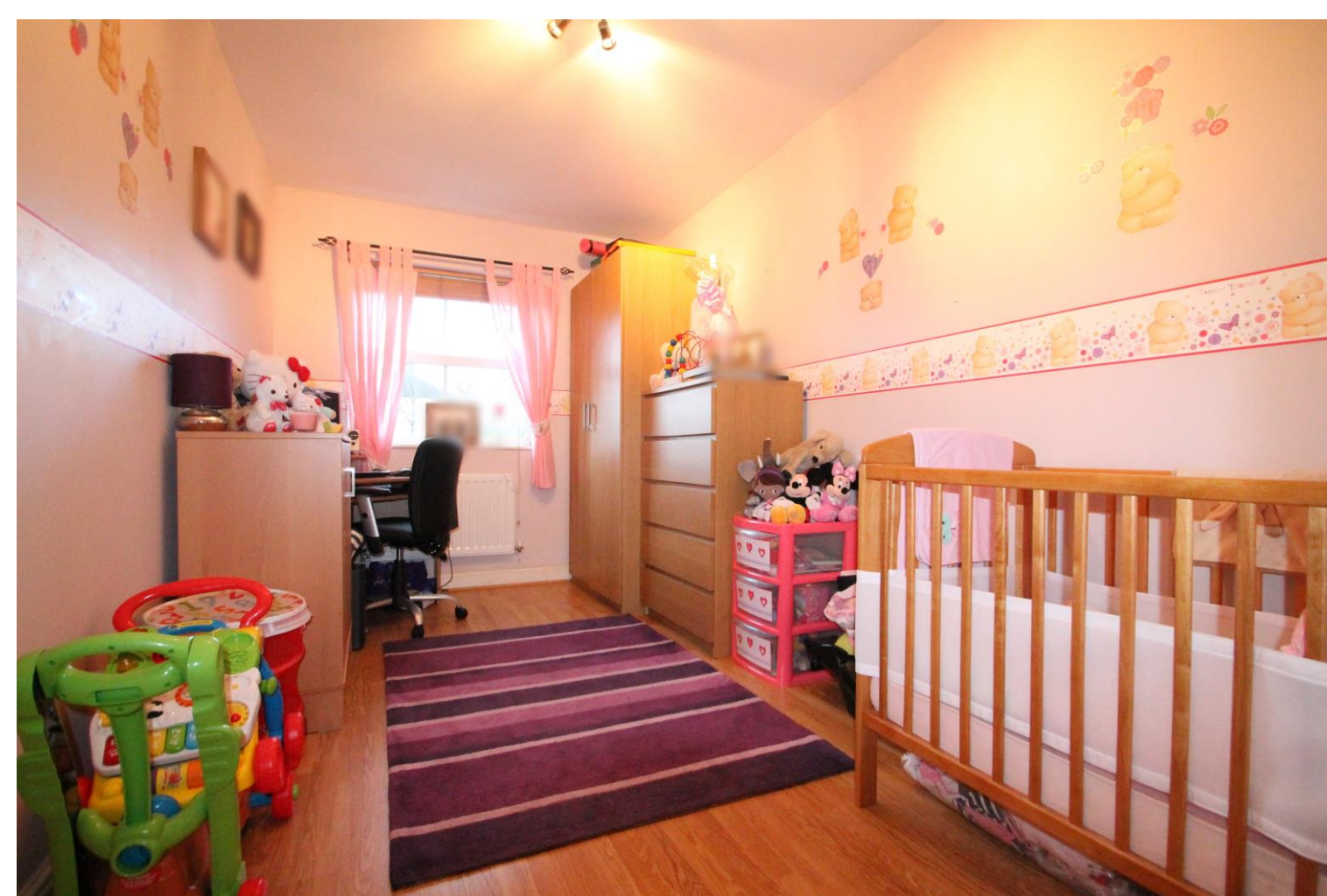
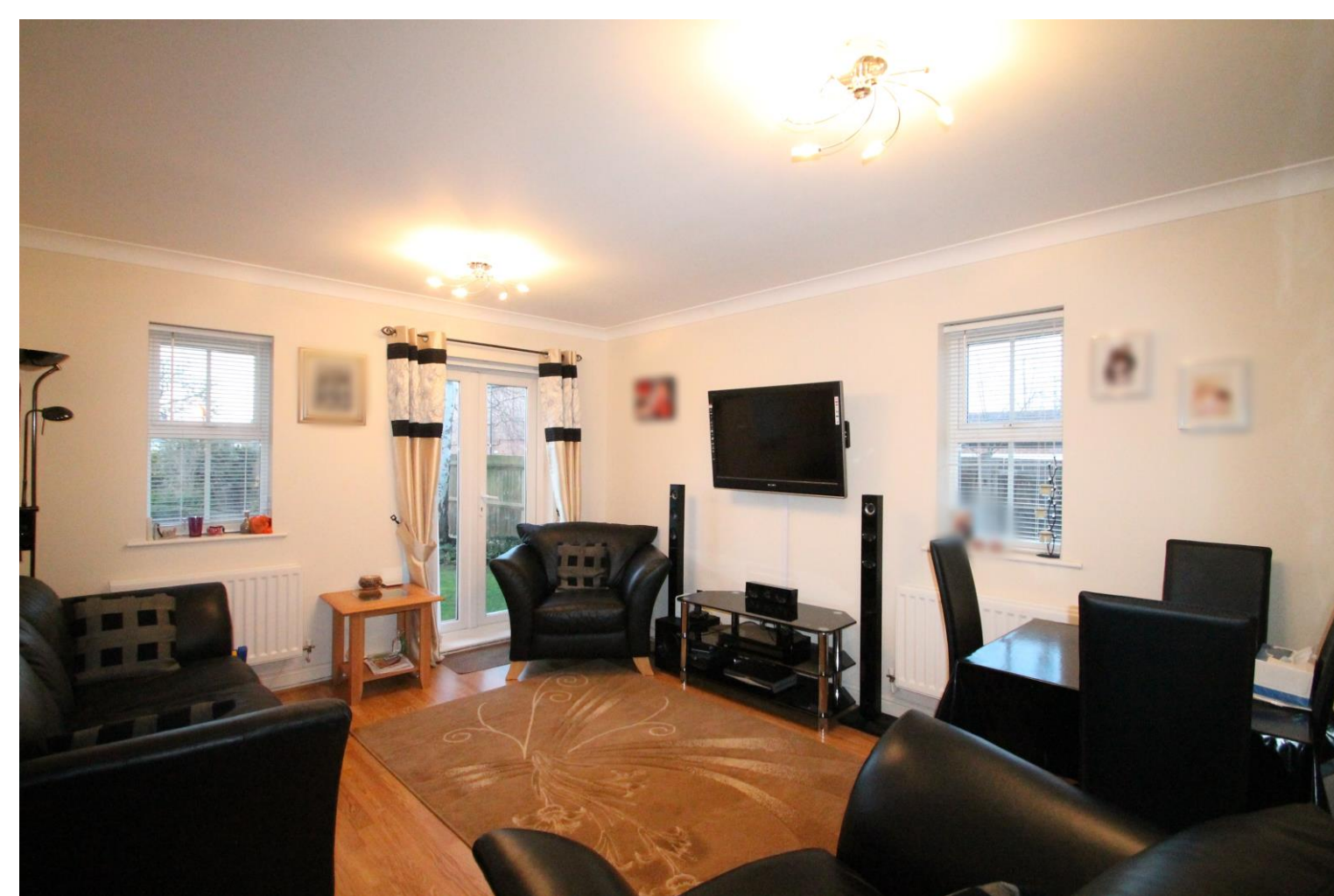
Brian Cox are delighted to offer for sale this contemporary two double bedroom, two bathroom apartment situated within this secure gated development. This exclusive two double bedroom apartment is located only a short distance from Harrow Town Centre with its array of shops, restaurants and bars. Harrow also offers excellent transport The property briefly comprises of a lounge, fitted kitchen, two bedrooms, en-suite shower room to master bedroom and family bathroom. The property benefits from double glazing, gas central heating, communal gardens, allocated parking with visitors parking.



£450,000
Leasehold

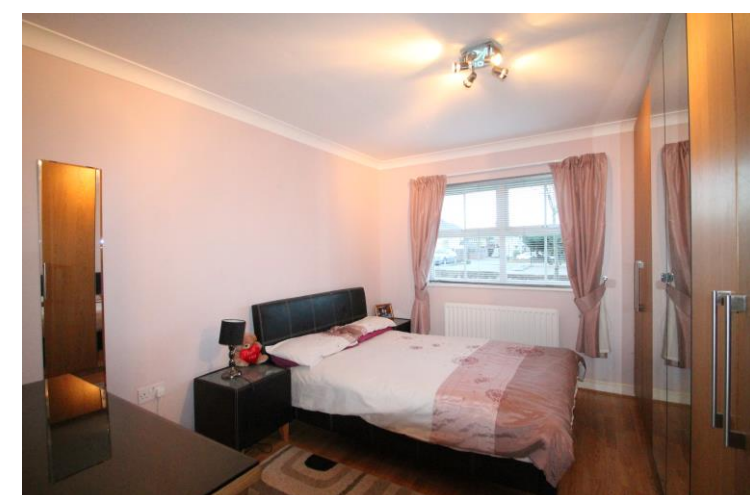
Manor Road, Harrow HA1 2NZ

Consumer Protection from Unfair Trading Regulations 2008 We have not tested any apparatus, equipment, fixtures, fittings or services and so cannot verify that they are in working order or fit for purpose. You are advised to obtain verification from your solicitor or surveyor. References to the tenure of a property are based on information supplied by the seller. We have not had sight of the title documents and a buyer is advised to obtain verification from their solicitor. Items shown in photographs are not included unless specifically mentioned within the sales particulars, but may be available by separate negotiation. We advise you to book an appointment to view before embarking on any journey to see a property, and check its availability.



in brief...

- Two Double Bedrooms
- Two Bathrooms
- Ground Floor Apartment
- Allocated Parking
- Secure Gated Development
- 109 Unexpired Lease Remaining



the location...

nearest stations ...

Kenton Station (0.4 miles)
Northwick Park Station (0.5 miles)
Harrow-on-the-Hill Station (0.5 miles)

Harrow is a large suburban town in the London Borough of Harrow, North West London, England. It is centred 10.5 miles (16.9 km) North West of Charing Cross.

Harrow has two large shopping centres which are St Anns and St Georges with its many large department stores, restaurants, cafes and cinema.

There are many local Schools in the area some of these include Elmgrove Primary School & Nursery, Norbury School Marlborough Primary School and Byron Court Primary School.

If you have older children there are local Secondary Schools which include Harrow High School, The Jubilee Academy, St Gregory's Catholic Science College and The Sacred Heart Language College.