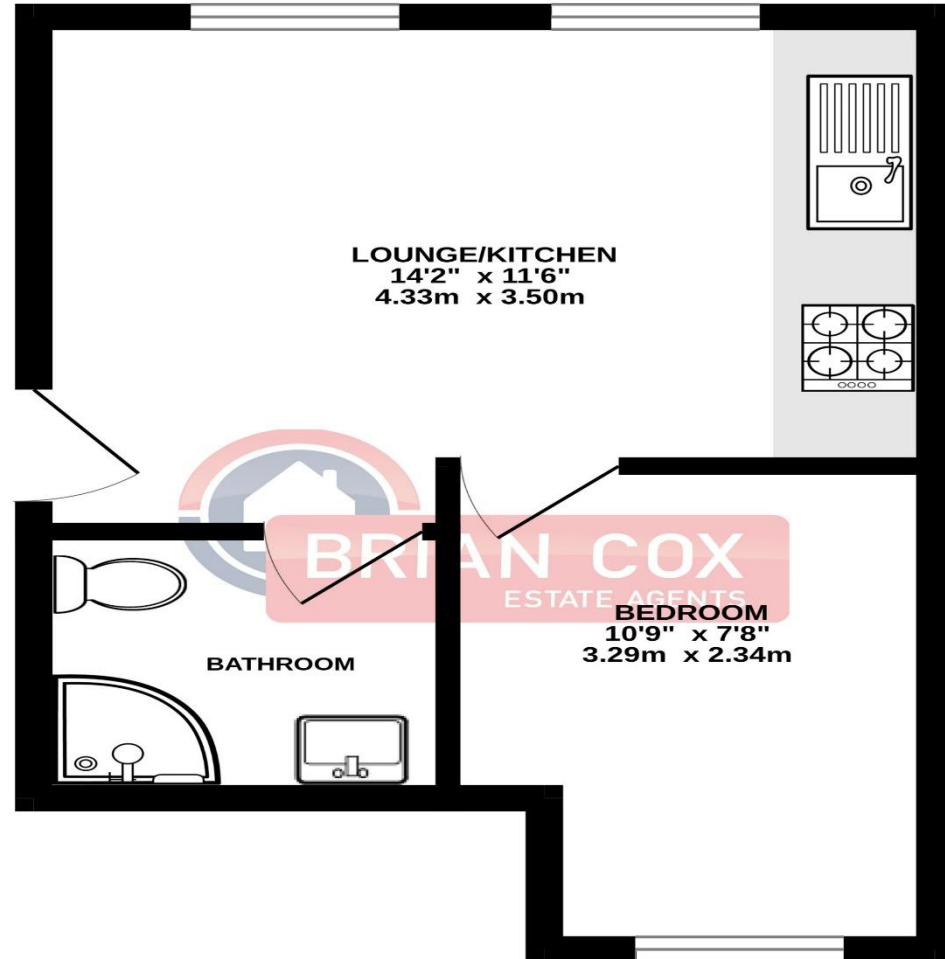


the floorplan...

GROUND FLOOR
268 sq.ft. (24.9 sq.m.) approx.



TOTAL FLOOR AREA : 268 sq.ft. (24.9 sq.m.) approx.
Whilst every attempt has been made to ensure the accuracy of the floorplan contained here, measurements of doors, windows, rooms and any other items are approximate and no responsibility is taken for any error, omission or mis-statement. This plan is for illustrative purposes only and should be used as such by any prospective purchaser. The services, systems and appliances shown have not been tested and no guarantee as to their operability or efficiency can be given.
Made with Metropix ©2024

more details from...

call: **Brian Cox Harrow: 0208 912 0006**
email: info@brian-cox.co.uk
web: www.brian-cox.co.uk



Consumer Protection from Unfair Trading Regulations 2008 We have not tested any apparatus, equipment, fixtures, fittings or services and so cannot verify that they are in working order or fit for purpose. You are advised to obtain verification from your solicitor or surveyor. References to the tenure of a property are based on information supplied by the seller. We have not had sight of the title documents and a buyer is advised to obtain verification from their solicitor. Items shown in photographs are not included unless specifically mentioned within the sales particulars, but may be available by separate negotiation. We advise you to book an appointment to view before embarking on any journey to see a property, and check its availability.



0208 912 0006
brian-cox.co.uk

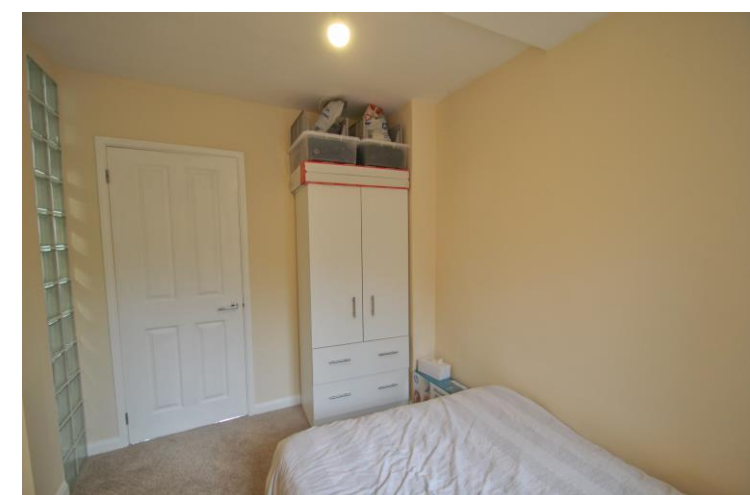


Brian Cox & Company are proud to bring to the market this immaculately presented ground floor, 1 bed apartment. The property is finished to a modern standard throughout and is ideally situated on a quiet cul-de-sac moments away from South Harrow High Street offering a range of shops, bars and restaurants as well as being a minutes walk of the stunning, wide open spaces of Alexandra Park. Call now so you do not miss out!



Offers Over £235,000
Leasehold

Grovelands Close, Harrow
HA2 8PA



in brief...

- GREAT CONDITION
- QUIET LOCATION
- CLOSE TO TRANSPORT LINKS
- 1 BEDROOM
- GAS CENTRAL HEATING
- GROUND FLOOR
- RECENTLY REFURBISHED



the location...

nearest stations ...

Northolt Park Station (0.4 mi)
South Harrow Station (0.4 mi)
Rayners Lane Station (0.9 mi)

South Harrow is South-West of Harrow-on-the-Hill in the London Borough of Harrow and its development originally spread South and West from the hamlet of Roxeth as a result of urbanisation and easier access from Central London by rail.

The area includes the geometric garden estate of Shaftesbury Circus. Beyond this historic heart, lies a newly-developed retail park which compliments the original high street, Northolt Road, offering a variety of amenities.

There are many local schools within close proximity to the property, including Roxeth Primary School, Greenwood Primary School, Rooks Heath School and Whitmore High School.