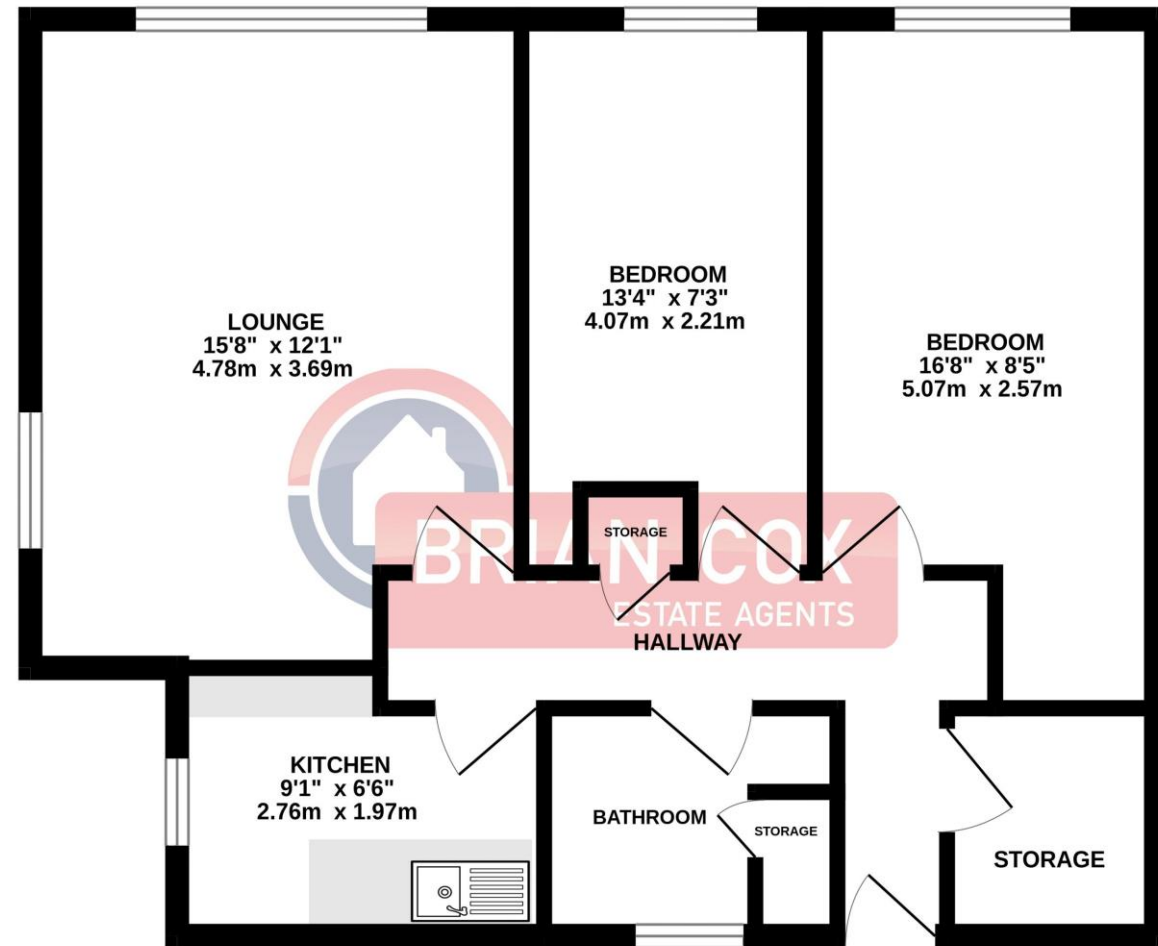


the floorplan...

GROUND FLOOR
592 sq.ft. (55.0 sq.m.) approx.



TOTAL FLOOR AREA: 592 sq.ft. (55.0 sq.m.) approx.
Whilst every attempt has been made to ensure the accuracy of the floorplan contained here, measurements of doors, windows, rooms and any other items are approximate and no responsibility is taken for any error, omission or mis-statement. This plan is for illustrative purposes only and should be used as such by any prospective purchaser. The services, systems and appliances shown have not been tested and no guarantee as to their operability or efficiency can be given.
Made with Metropix ©2024

more details from...

call: **Brian Cox Harrow: 0208 912 0006**
email: info@brian-cox.co.uk
web: www.brian-cox.co.uk



Consumer Protection from Unfair Trading Regulations 2008 We have not tested any apparatus, equipment, fixtures, fittings or services and so cannot verify that they are in working order or fit for purpose. You are advised to obtain verification from your solicitor or surveyor. References to the tenure of a property are based on information supplied by the seller. We have not had sight of the title documents and a buyer is advised to obtain verification from their solicitor. Items shown in photographs are not included unless specifically mentioned within the sales particulars, but may be available by separate negotiation. We advise you to book an appointment to view before embarking on any journey to see a property, and check its availability.



0208 912 0006
brian-cox.co.uk

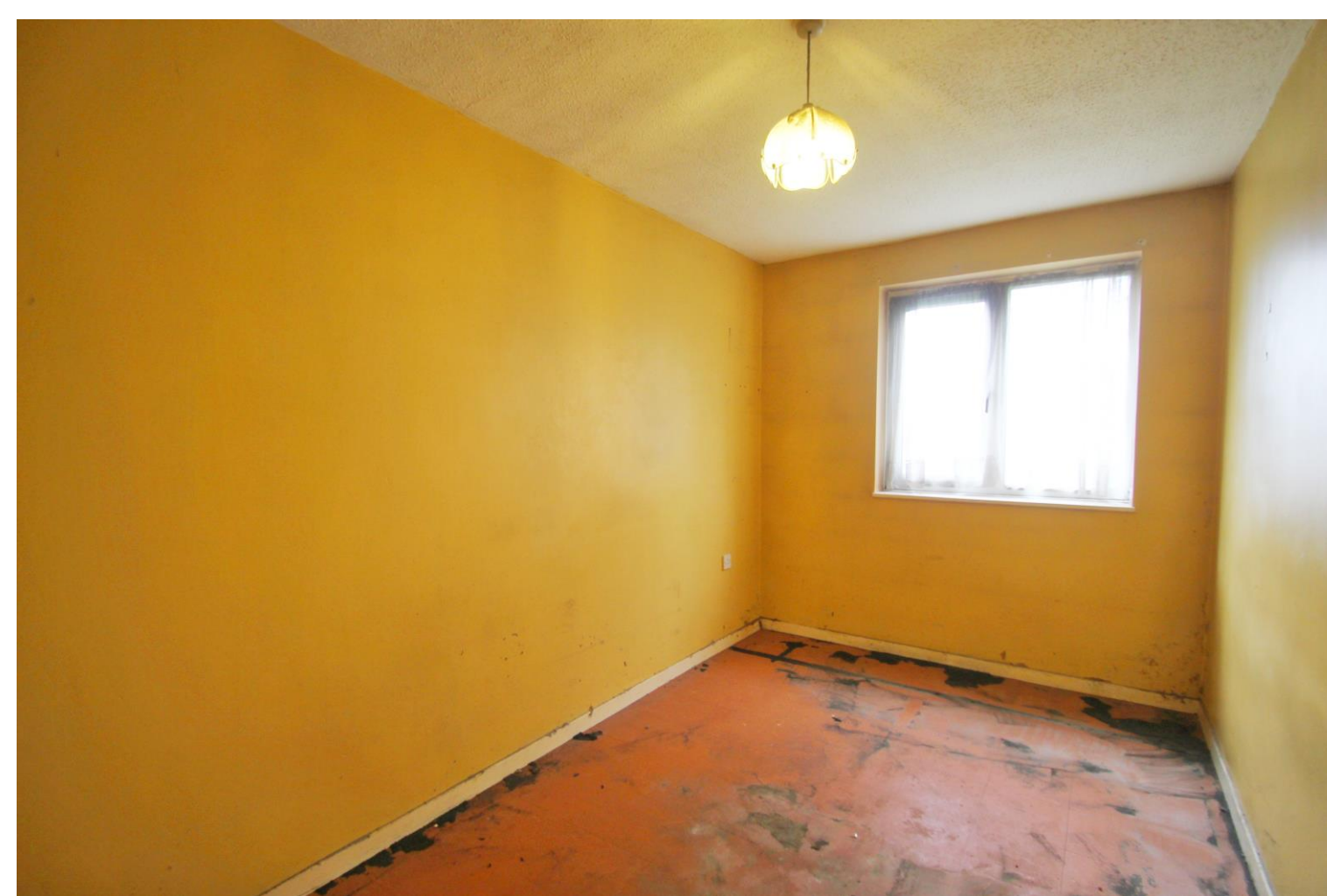


TWO BEDROOM - GROUND FLOOR APARTMENT - IN NEED OF MODERNISATION - NO CHAIN. Brian Cox and Company offer to the market this ground floor two bedroom apartment in the heart of Harrow. The property could be a fantastic project due to the work required and currently benefits from a large dual aspect lounge, two double bedrooms, double glazing and is just a 0.4 mile walk from Harrow on the Hill Station. Viewings are available now so call to arrange yours!!



£250,000
Leasehold

Charles Crescent, Harrow
HA1 4AR



in brief...

- Two Double Bedroom
- Ground Floor Apartment
- In Need of Modernisation
- 89 Year Lease
- No Chain
- View Now



the location...

nearest stations ...

Harrow-on-the-Hill Station (0.4 miles)
West Harrow Station (0.5 miles)
South Harrow Station (0.9 miles)

Harrow is a large suburban town in the London Borough of Harrow, North West London, England. It is centred 10.5 miles (16.9 km) North West of Charing Cross.

Harrow has two large shopping centres which are St Anns and St Georges with its many large department stores, restaurants, cafes and cinema.

There are many local schools in the area some of these include St Anselm's Catholic Primary School, Roxeth Primary School, Vaughan Primary School, Norbury School, Whitmore High School and The Jubilee Academy.