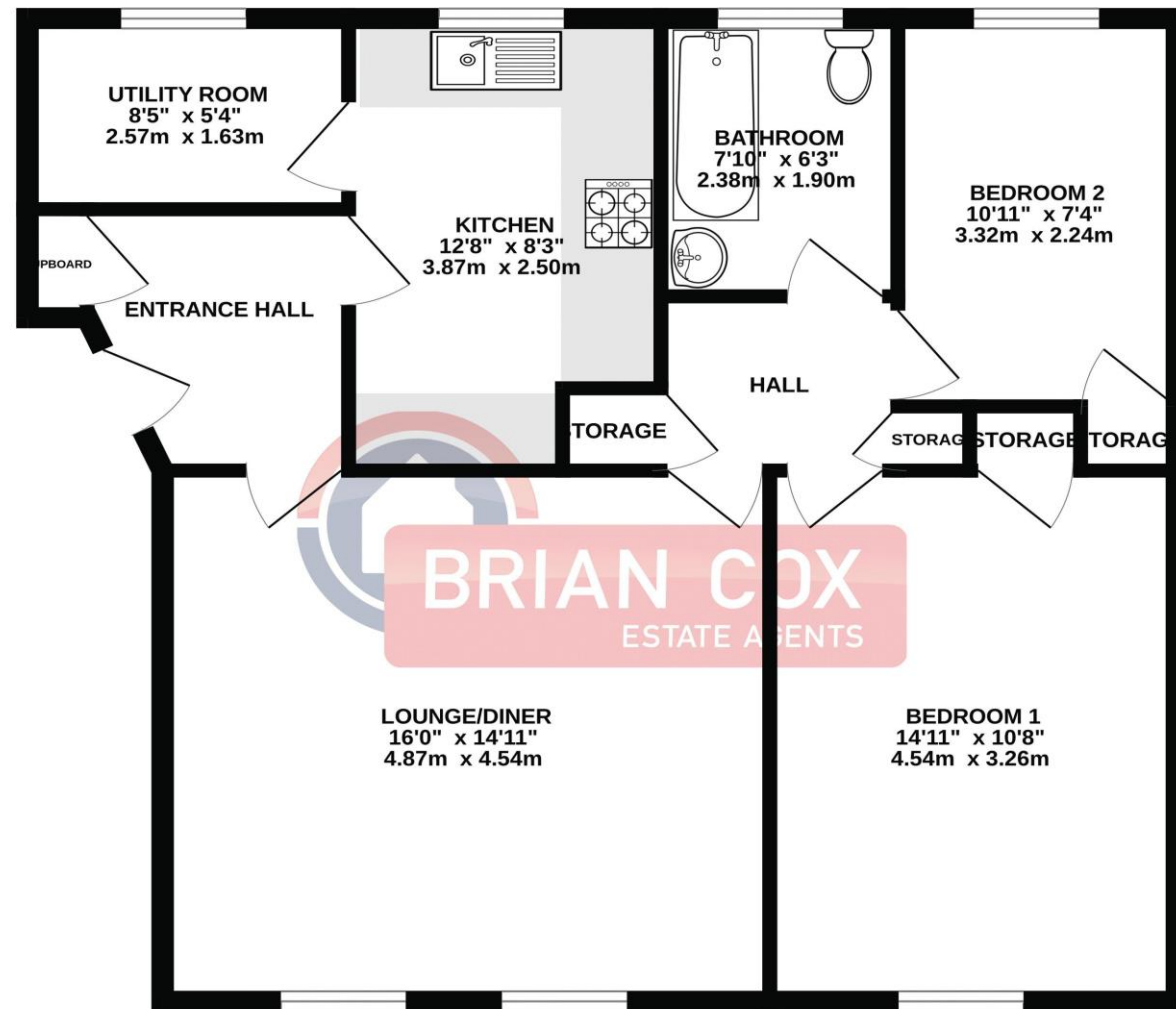


the floorplan...

FIRST FLOOR
770 sq.ft. (71.5 sq.m.) approx.



TOTAL FLOOR AREA : 770 sq.ft. (71.5 sq.m.) approx.
Whilst every attempt has been made to ensure the accuracy of the floorplan contained here, measurements of doors, windows, rooms and any other items are approximate and no responsibility is taken for any error, omission or mis-statement. This plan is for illustrative purposes only and should be used as such by any prospective purchaser. The services, systems and appliances shown have not been tested and no guarantee as to their operability or efficiency can be given.
Made with Metropix ©2023

more details from...

call: **Brian Cox Harrow: 0208 912 0006**
email: info@brian-cox.co.uk
web: www.brian-cox.co.uk



0208 912 0006
brian-cox.co.uk



PURPOSE BUILT FLAT - TWO BEDROOMS -
GARAGE - SHARE OF FREEHOLD - CHAIN FREE

Brian Cox are pleased to present to the market this spacious two-bedroom first floor flat situated in this popular residential area and providing easy access to local schools, shops, and transport links. The property comprises of a large lounge/diner, kitchen, utility room, two double bedrooms, and bathroom. The property benefits from double glazing, gas central heating, communal grounds, garage, and a share of the freehold. Chain Free.



£350,000
Share of Freehold

43-47 Pinner View, Harrow HA1 4QQ

Consumer Protection from Unfair Trading Regulations 2008 We have not tested any apparatus, equipment, fixtures, fittings or services and so cannot verify that they are in working order or fit for purpose. You are advised to obtain verification from your solicitor or surveyor. References to the tenure of a property are based on information supplied by the seller. We have not had sight of the title documents and a buyer is advised to obtain verification from their solicitor. Items shown in photographs are not included unless specifically mentioned within the sales particulars, but may be available by separate negotiation. We advise you to book an appointment to view before embarking on any journey to see a property, and check its availability.



in brief...

- First Floor Flat
- Two Bedrooms
- Gas Central Heating
- Garage
- Communal Gardens
- Chain Free



the location...

nearest stations ...

- West Harrow (0.2 miles)
- North Harrow (0.5 miles)
- Harrow-on-the-Hill (0.7 miles)

Harrow is a large suburban town in the London Borough of Harrow, Northwest London, England. It is centred 10.5 miles (16.9 km) Northwest of Charing Cross.

Harrow has two large shopping centres which are St Anns and St Georges with its many large department stores, restaurants, cafes, and cinema. You have a large Tescos & Morrison's which are both within a short drive to the property.

There are many local schools in the area some of these include Norbury School, St Anselm's Catholic Primary School, Vaughan Primary School, and Marlborough Primary School.