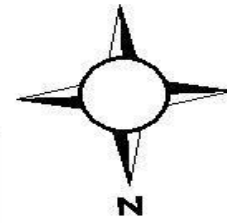
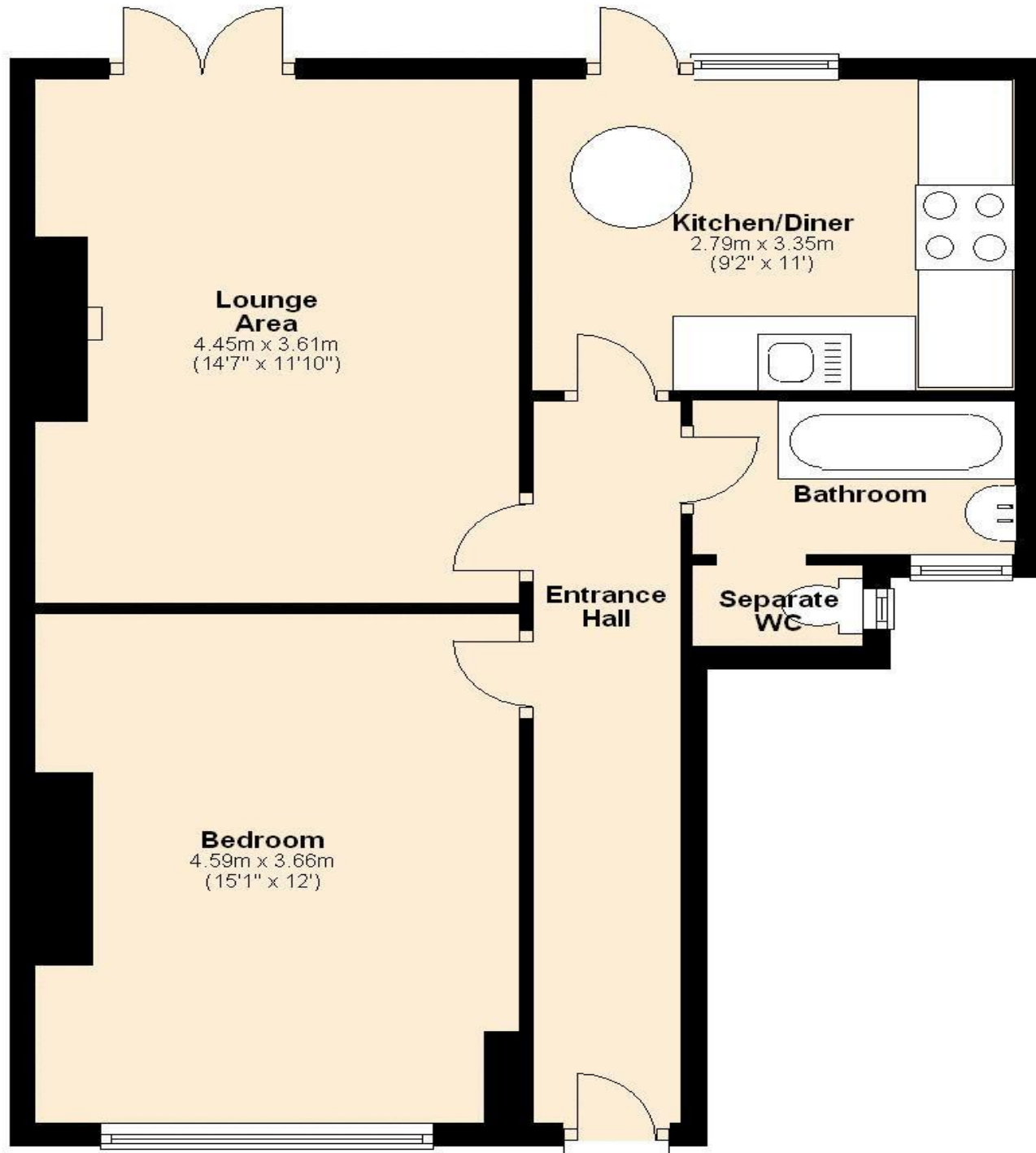


the floorplan...

Ground Floor

Approx. 55.8 sq. metres (600.4 sq. feet)



0208 912 0006
brian-cox.co.uk



GROUND FLOOR MAISONETTE - ONE BEDROOM - GARDEN - LONG LEASE - POTENTIAL TO EXTEND

Brian Cox are pleased to offer this spacious one double bedroom ground floor garden maisonette to the market. Located within a short 2-3-minute walk to Harrow on the Hill train and bus station along with the Town Centre which offers a wide variety of retail shops as well as numerous restaurants, leisure facilities and wine bars. The property is well presented throughout and comprises of a lounge, kitchen, bedroom, and bathroom. The property benefits from double glazing, gas central heating, a long lease, and private rear garden.



more details from...

call: **Brian Cox Harrow: 0208 912 0006**
email: info@brian-cox.co.uk
web: www.brian-cox.co.uk



£365,000
Leasehold

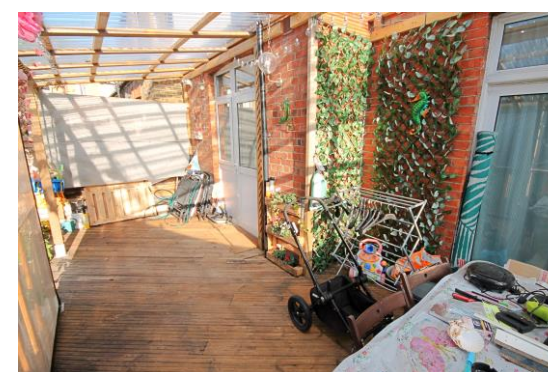
Greenhill Way, Harrow HA1 1LE

Consumer Protection from Unfair Trading Regulations 2008 We have not tested any apparatus, equipment, fixtures, fittings or services and so cannot verify that they are in working order or fit for purpose. You are advised to obtain verification from your solicitor or surveyor. References to the tenure of a property are based on information supplied by the seller. We have not had sight of the title documents and a buyer is advised to obtain verification from their solicitor. Items shown in photographs are not included unless specifically mentioned within the sales particulars, but may be available by separate negotiation. We advise you to book an appointment to view before embarking on any journey to see a property, and check its availability.



in brief...

- One Bedroom
- Ground Floor Maisonette
- Private Rear Garden
- long Lease
- Good Condition



the location...

nearest stations ...

- Harrow-on-the-Hill (0.2 miles)
- Harrow & Wealdstone (0.6 miles)
- West Harrow (0.7 miles)

Harrow is a large suburban town in the London Borough of Harrow, Northwest London, England. It is centred 10.5 miles (16.9 km) Northwest of Charing Cross.

Harrow has two large shopping centres which are St Anns and St Georges with its many large department stores, restaurants, cafes, and cinema.

There are many local schools within close proximity of the property these include Norbury School, St Anselm's Catholic Primary School, Marlborough Primary School and Elmgrove Primary School & Nursery.