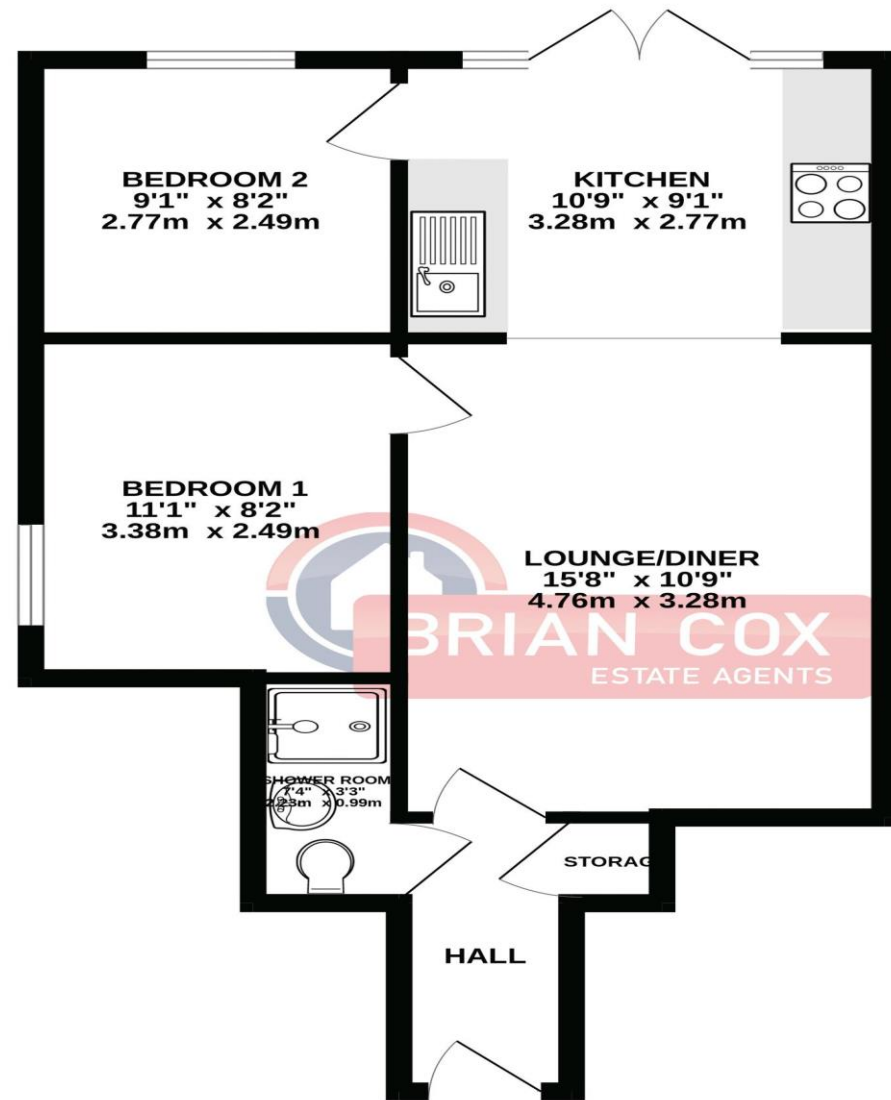


the floorplan...

GROUND FLOOR
494 sq.ft. (45.9 sq.m.) approx.



TOTAL FLOOR AREA : 494 sq.ft. (45.9 sq.m.) approx.
Whilst every attempt has been made to ensure the accuracy of the floorplan contained here, measurements of doors, windows, rooms and any other items are approximate and no responsibility is taken for any error, omission or mis-statement. This plan is for illustrative purposes only and should be used as such by any prospective purchaser. The services, systems and appliances shown have not been tested and no guarantee as to their operability or efficiency can be given.
Made with Metropix ©2023

more details from...

call: **Brian Cox Harrow: 0208 912 0006**
email: info@brian-cox.co.uk
web: www.brian-cox.co.uk



0208 912 0006
brian-cox.co.uk



GROUND FLOOR FLAT - TWO BEDROOMS
- GARDEN - SHARE OF FREEHOLD

Brain Cox are pleased to present to the market this well presented two-bedroom ground floor garden flat. The property provides easy access to Harrow Town Centre and its multitude of shops and transport links. The property comprises briefly of an open plan lounge/kitchen, two bedrooms and bathroom. The property benefits from double glazing, electric heating, garden and share of freehold. Chain Free.



£380,000
Share of Freehold

Hindes Road, Harrow, HA1 1SQ

Consumer Protection from Unfair Trading Regulations 2008 We have not tested any apparatus, equipment, fixtures, fittings or services and so cannot verify that they are in working order or fit for purpose. You are advised to obtain verification from your solicitor or surveyor. References to the tenure of a property are based on information supplied by the seller. We have not had sight of the title documents and a buyer is advised to obtain verification from their solicitor. Items shown in photographs are not included unless specifically mentioned within the sales particulars, but may be available by separate negotiation. We advise you to book an appointment to view before embarking on any journey to see a property, and check its availability.



in brief...

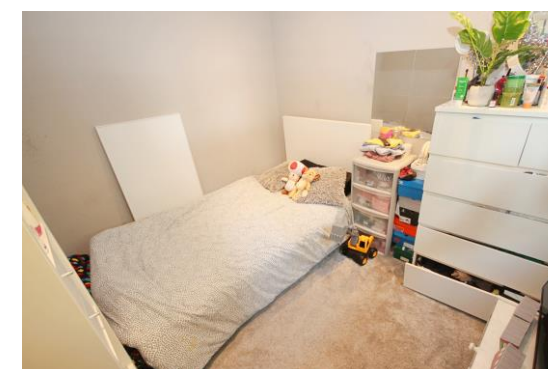
- GROUND FLOOR FLAT
- SHARE OF FREEHOLD
- GARDEN
- TWO BEDROOMS
- OPEN PLAN LOUNGE/KITCHEN
- CHAIN FREE



the location...

nearest stations ...

Harrow-on-the-Hill (0.3 miles)
 Harrow & Wealdstone (0.6 miles)
 West Harrow (0.8 miles)
 Harrow is a large suburban town in the London Borough of Harrow, North West London, England. It is centred 10.5 miles (16.9 km) North West of Charing Cross.



Harrow has two large shopping centres which are St Anns and St Georges with its many large department stores, restaurants, cafes and cinema.

There are many local schools in the area some of these include Norbury School, Marlborough Primary School, St Anselm's Catholic Primary School, Harrow High School and Whitefriars School.

