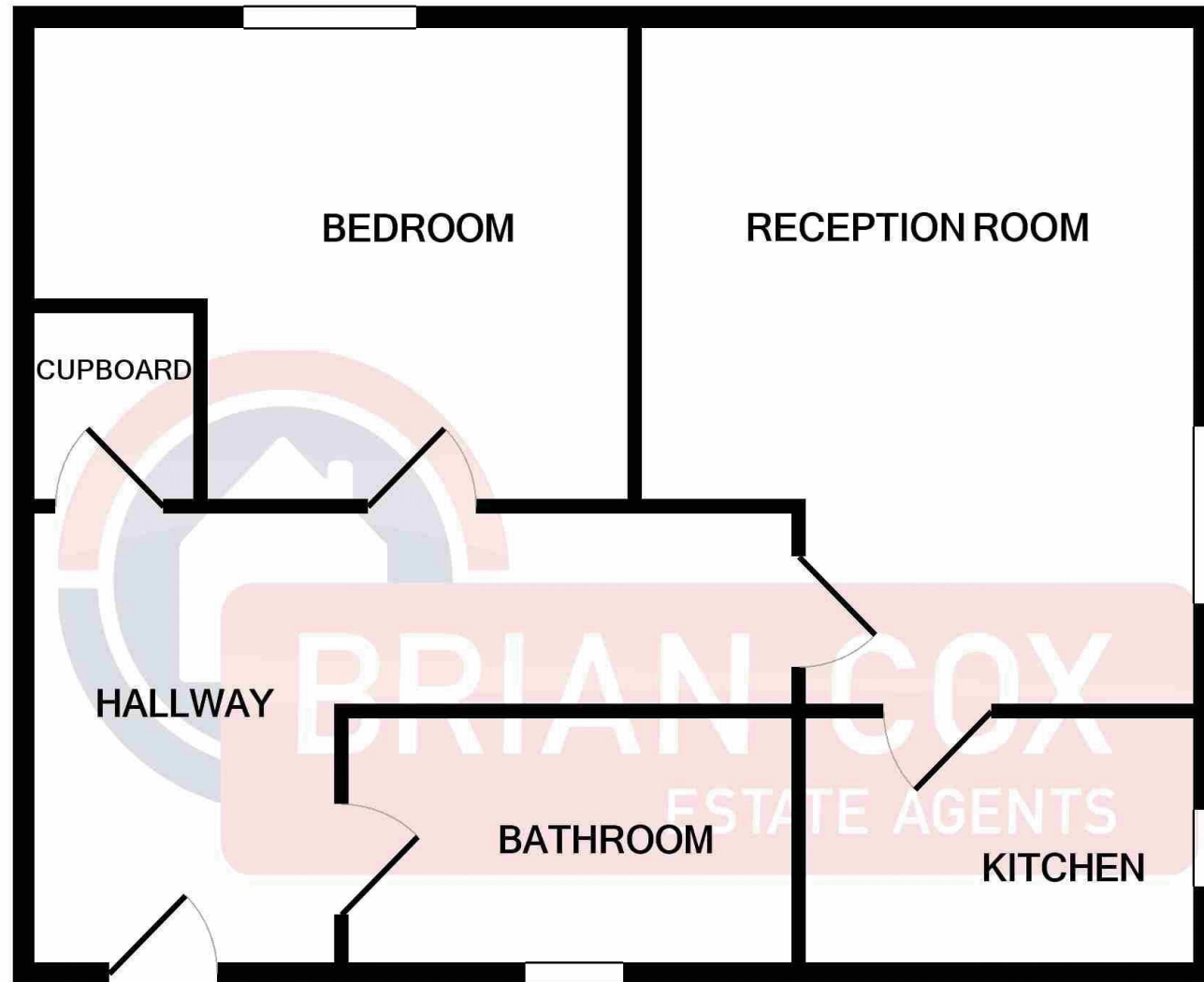


the floorplan...



Whilst every attempt has been made to ensure the accuracy of the floor plan contained here, measurements of doors, windows, rooms and any other items are approximate and no responsibility is taken for any error, omission, or mis-statement. This plan is for illustrative purposes only and should be used as such by any prospective purchaser. The services, systems and appliances shown have not been tested and no guarantee as to their operability or efficiency can be given
Made with Metropix ©2021

more details from...

call: **Brian Cox Sudbury: 0208 422 1007**

email: **Kasru.ali@brian-cox.co.uk**

web: **www.brian-cox.co.uk**



0208 422 1007
brian-cox.co.uk



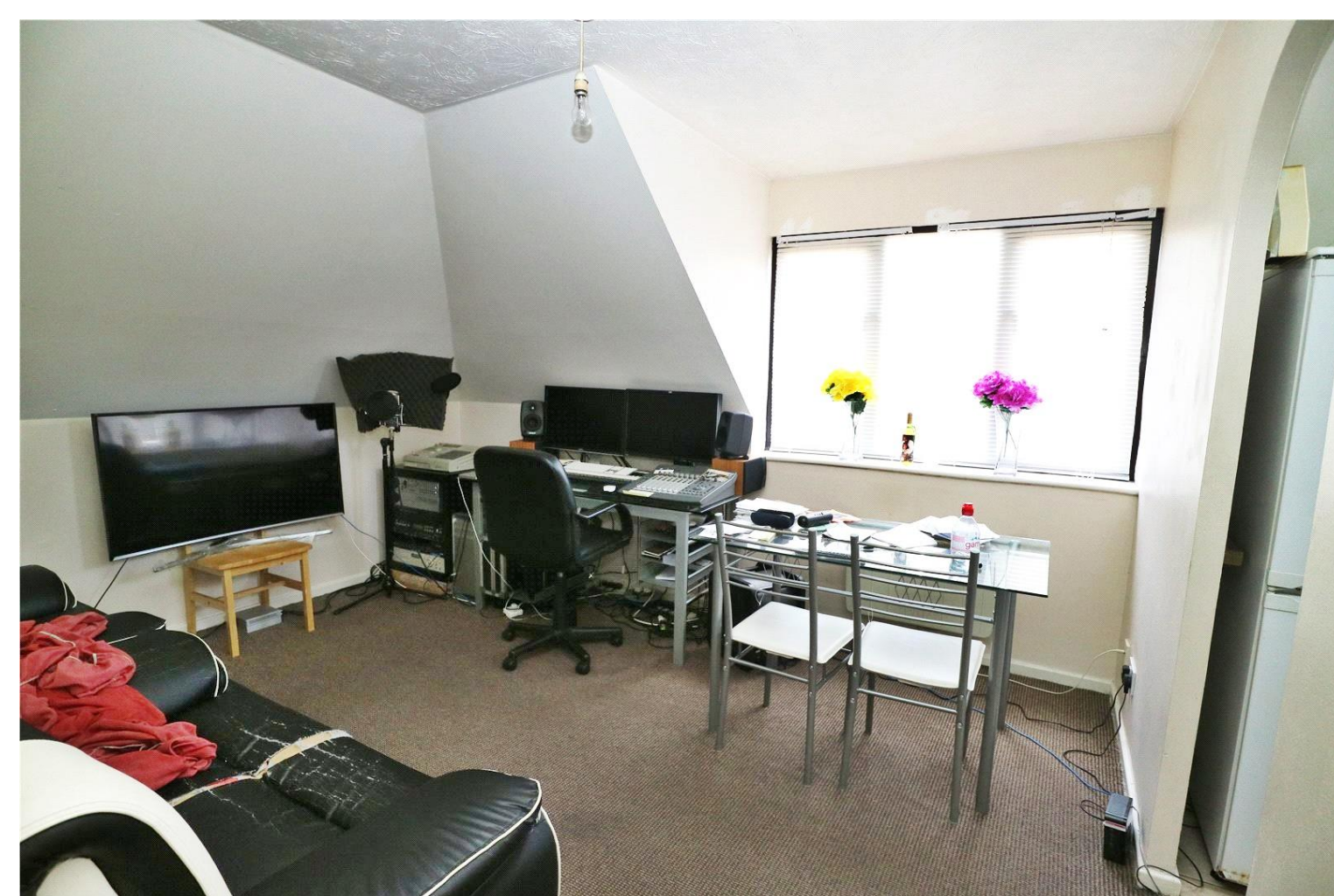
PURPOSE BUILT FLAT - TOP FLOOR
APARTMENT - ONE BEDROOM - CHAIN FREE.
Located in this popular residential area and situated close to local schools, shops and various transport links. This purpose built top floor apartment is a superb opportunity for both first time buyers and investors alike. This spacious one bedroom apartment comprises of a lounge, fitted kitchen bathroom and bedroom. The property benefits from double glazing, electric heating, communal gardens and parking.



£225,000
Leasehold

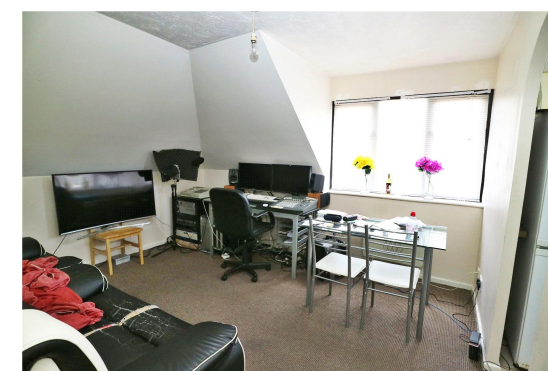
Harrow Road, Wembley HA0 2HD

Consumer Protection from Unfair Trading Regulations 2008 We have not tested any apparatus, equipment, fixtures, fittings or services and so cannot verify that they are in working order or fit for purpose. You are advised to obtain verification from your solicitor or surveyor. References to the tenure of a property are based on information supplied by the seller. We have not had sight of the title documents and a buyer is advised to obtain verification from their solicitor. Items shown in photographs are not included unless specifically mentioned within the sales particulars, but may be available by separate negotiation. We advise you to book an appointment to view before embarking on any journey to see a property, and check its availability.



in brief...

- Purpose Built Apartment
- Top Floor
- One Bedroom
- Residents Parking
- Communal Grounds
- Residents Parking



the location...

nearest stations ...

- Sudbury Town (0.2 miles)
- Sudbury & Harrow Road (0.2 miles)
- Wembley Central (0.7 miles)

Sudbury is a suburb in the London borough of Brent and Harrow, located in North West London, United Kingdom.

Sudbury is an historical area having once extended from the 'South Manor- Sudbury' (thought to have been on Harrow Hill) to the area that is now known as Wembley Central.

There are two local school located within a mile of the property, Sudbury Primary School and Barnham Primary School.

There are great transport links outside the property such numerous bus route outside on Harrow road a few hundred metre from the entrance to the property.