



DE LEETH ROAD, BISHOPS TACHBROOK

complete ●●●
SALES & LETTINGS



“This Taylor Wimpey Home is set on the Meadowsweet Farm Development, on the outskirts of the popular village of Bishops Tachbrook. Which is located just off the Harbury Lane and these particular homes are at the foot of the Tachbrook Country Park - an expansive protected nature reserve, great for running and dog walks.”



A spacious 900 sqft end terrace home, built by the prestige builders Taylor Wimpey to 'The Beauford' design in 2020 on the Meadowsweet Farm development on the outskirts of Bishops Tachbrook - just off the Harbury Lane. The home is extremely well presented and comprises an entrance hall, living room, kitchen diner with quartz worktops and fitted appliances, WC, two huge bedrooms, en-suite and family bathroom. There is a landscaped south-west facing rear garden, parking side-by-side for two cars to the front with an EV charging point. Just behind the property is the Tachbrook Country Park and farm fields beyond. This property is well located just south of Leamington Spa, great for JLR, M40 and to get into Leamington or Warwick train station. Very well located for the new Oakley Secondary School which is a 10-minute walk.



It's in the details...

Entrance Hall

A wide modern composite entrance door with window, leads into the entrance hall which has timber effect luxury vinyl tile flooring, carpeted staircase to the first floor, a radiator, cupboard housing electric consumer unit and is ideal for the internet router - electric points inside. There are downlights and a door through to the living room.

Living Room

A tranquil living room with Farrow and Ball style painted walls, coving, wall mounted radiator, glazed door through to the kitchen diner and a uPVC double glazed window to the front.



Guest WC

With toilet, sink and extractor.

Kitchen Diner

A real air of luxury in this kitchen with beautifully painted walls, luxury timber effect vinyl tiled flooring, a wonderful upgraded dove grey shaker style kitchen, with quartz worktops, which includes a 1 & 1/2 half bowl Franke sunken sink with an engraved drainer and surface mounted mixer tap. There is a Zanussi four-ring gas hob, glass splashback and extractor hood. Fitted double Zanussi oven, fitted fridge freezer, pull-out large racking, washing machine, fitted dishwasher, kickboard LED lighting and under-counter lighting. A cupboard houses the Logic Combi ESP1 35 boiler. There is a double radiator, uPVC double glazed French doors to the garden, a ceiling extractor and downlights. There is also a ceiling light point perfect for over a dining table. Plus a uPVC double glazed window with a quartz shelf.



Landing

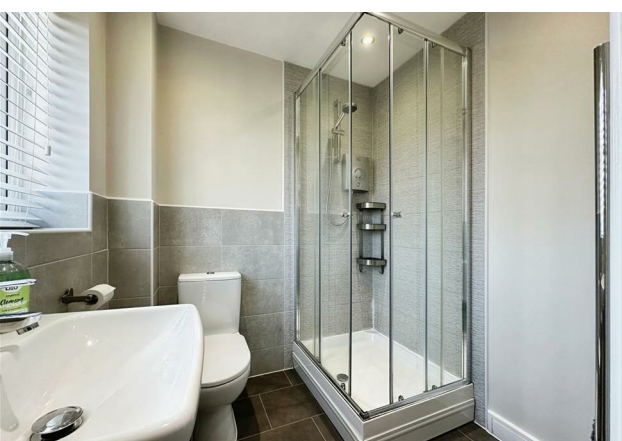
A carpeted landing, radiator, loft hatch and doors through to the two bedrooms and bathroom.

Bedroom One

Very well presented bedroom with feature wallpaper, and fitted wardrobes. There is a uPVC double glazed window to the front, a radiator and door through to en-suite.

En-Suite

Fitted with a shower cubicle which is tiled and has an electric shower. Pedestal hand wash basin & chrome mixer tap, a toilet, a chrome towel radiator, down-lights, an extractor, a shaver point, a uPVC double glazed window, part tiled walls and luxury vinyl tiled flooring.



Bedroom Two

Spacious full-width double bedroom with a uPVC double glazed window that has a great view of the Tachbrook Country Park and farmer's fields beyond. There is coving and a radiator.

Bathroom

A stylish bathroom which has a bath, a glass shower screen with a glass 'flipper' panel, a thermostatic rainfall shower and a handheld shower attachment. Pedestal hand wash basin with chrome mixer tap, a toilet, chrome towel radiator, extractor, down-lights, luxury vinyl tiled flooring and part tiled with a feature tiled wall.



Garden

A sun-filled South West Facing garden, which has a beautiful extended patio, an area of lawn, with pretty stoned bedding planted border. The garden has perimeter fencing and a timber gate to the side passage.

Front & Parking

The property comes with two parking spaces side-by-side. There is a pathway that leads up to the front door, which has a tiled storm porch, an outdoor light and an electric vehicle charging point. Barked area of planted bedding.

Location

Meadowsweet Farm is a Taylor Wimpey development located off Harbury Lane on the outskirts of Bishops Tachbrook, to the south of Leamington, benefiting from the plentiful shopping and leisure opportunities of the very vibrant town. Located in a highly desirable area on an attractive new build estate, which boasts large areas of greenery with the protected Tachbrook Country Park and the new secondary school - Oakley School on your doorstep, a 10 minute walk. There are excellent transport links to the M40, JLR and within easy reach of Leamington Train Station, a 7-minute drive. Leamington Spa offers an abundance of independent boutiques and chain retailers, a thriving social scene including excellent pubs, restaurants, cafes and bars and the local schooling is widely regarded as being excellent for all ages.

Heathcote Primary School – 15 min walk

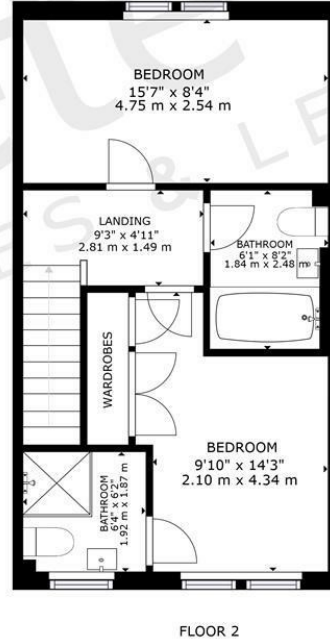
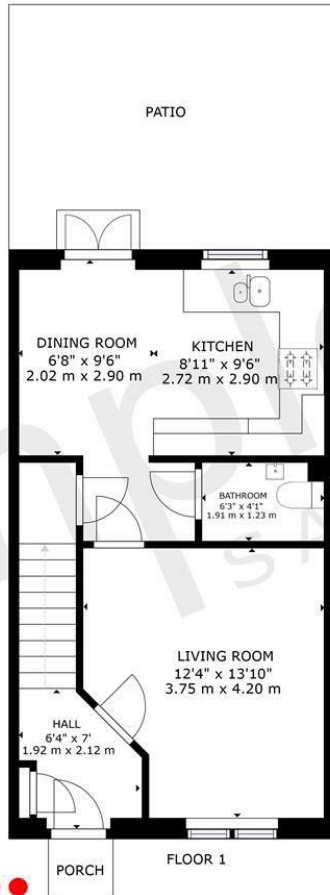
Oakley Secondary School – 10 min walk

Co-op – 15 min walk

Little Pioneers Nursery and Pre School – 15 min walk Leamington Train Station – 7 min drive

M40 / A46 – 5 min drive



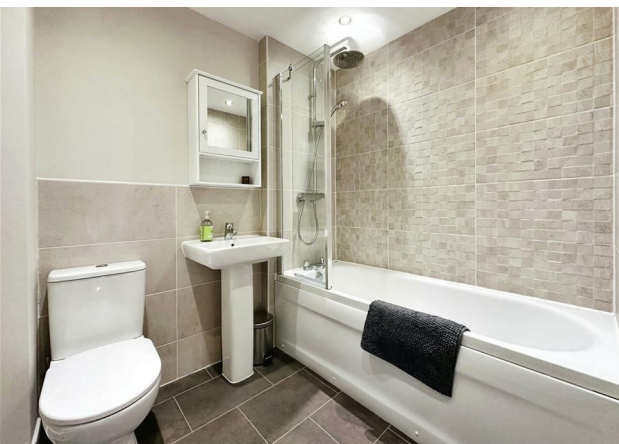


complete ●●●
SALES & LETTINGS

Brian Williams
01926 887723

The Leamington Property Expert

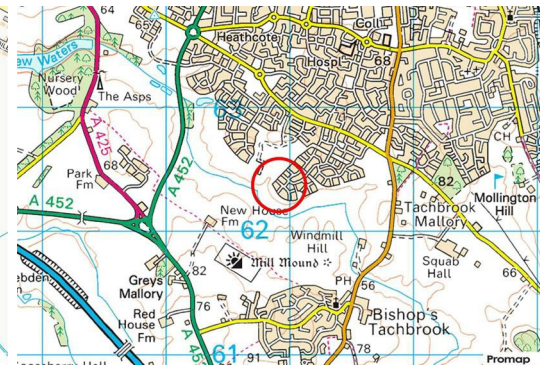
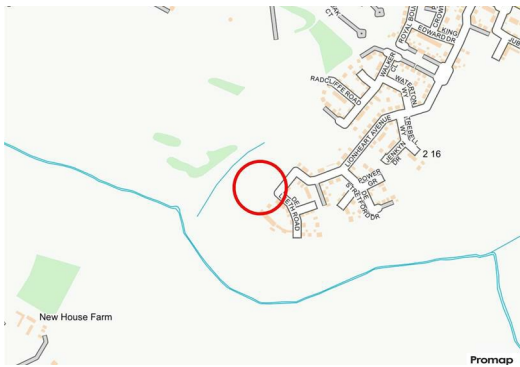
GROSS INTERNAL AREA
FLOOR 1: 452 sq ft, 41.99 m², FLOOR 2: 451 sq ft, 41.91 m²
EXCLUDED AREAS; PORCH: 10 sq ft, 0.91 m², PATIO: 208 sq ft, 19.29 m²
TOTAL: 903 sq ft, 83.9 m²
SIZES AND DIMENSIONS ARE APPROXIMATE, ACTUAL MAY VARY.





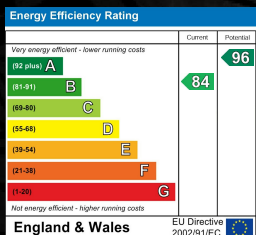
- Taylor Wimpey 'The Beauford'
- Spacious 900 Sqft
- Living Room
- Near Tachbrook Country Park
- Landscaped South West Facing Garden

- End Terrace
- Two large Double Bedrooms
- Dining Kitchen
- Bathroom, En-Suite & WC
- Side-By-Side Parking- 2 Cars



DE LEETH ROAD, LEAMINGTON SPA

Viewing - Arrangements can be made by Complete Estate Agents on: 01926 887723



1 Binswood Street, Leamington Spa, Warwickshire, CV32 5RW
 Tel: 01926 887723
 sales@complete247.co.uk
 www.complete247.co.uk

complete ●●●●
 SALES & LETTINGS