



YORK STREET, TOWN CENTRE

complete ●●●
SALES & LETTINGS



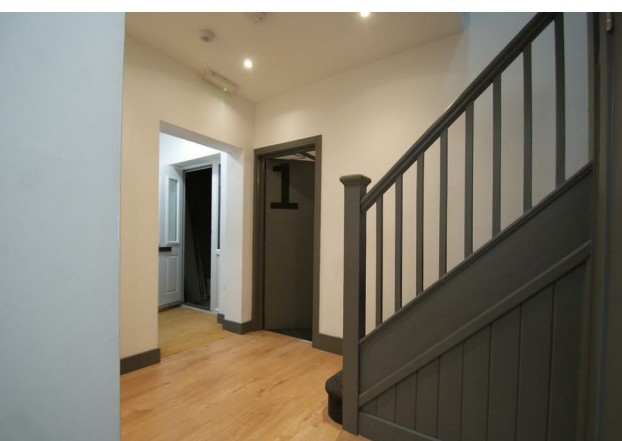


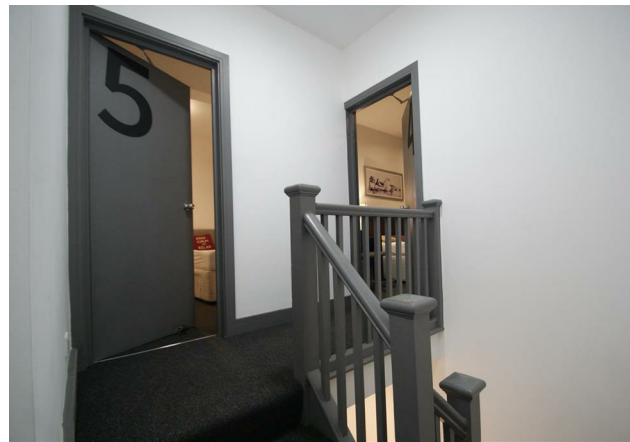
A well presented shared house in York Street, central Rugby. Close to the station and minutes from town. Very stylish co-living property with a single bedroom All inclusive of bills and access to 350mb WIFI. Warm house with a local shop less than a 1-minute walk. Two shower rooms, large communal space, landscaped garden with bike store.



Room 5

A single room for £90 per week which has a single bed and a wardrobe.







GROSS INTERNAL AREA
 FLOOR 1: 891 sq ft, 83 m², FLOOR 2: 637 sq ft, 59 m²
 TOTAL: 1528 sq ft, 142 m²
 SIZES AND DIMENSIONS ARE APPROXIMATE, ACTUAL MAY VARY.





- Stylish shared house
- Bike store
- Single Bedroom Available
- Spacious communal space
- Close to Rugby Station
- Two bathrooms
- Landscaped garden
- WiFi included
- Close to station
- Available Now

YORK STREET, RUGBY

Viewing - Arrangements can be made by Complete Estate Agents on: 01926 887723

Energy Efficiency Rating		
	Current	Potential
Very energy efficient - lower running costs		
(92 plus) A		
(81-91) B		
(69-80) C		
(55-68) D		
(39-54) E		
(21-28) F		
(1-20) G		
Not energy efficient - higher running costs		

England & Wales

EU Directive 2002/91/EC

1 Binswood Street, Leamington Spa, Warwickshire, CV32 5RW
 Tel: 01926 887723
 sales@complete247.co.uk
 www.complete247.co.uk

complete ●●●
 SALES & LETTINGS