



YORK STREET, TOWN CENTRE

complete ●●●  
SALES & LETTINGS



24HR CCTV

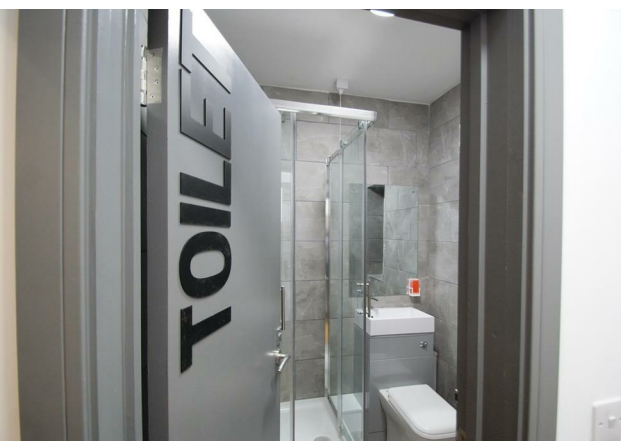
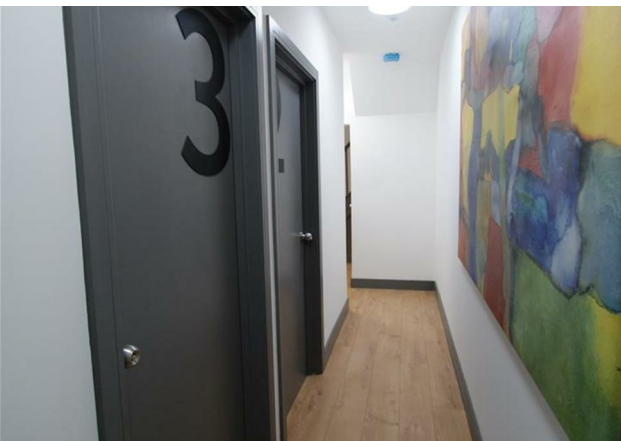


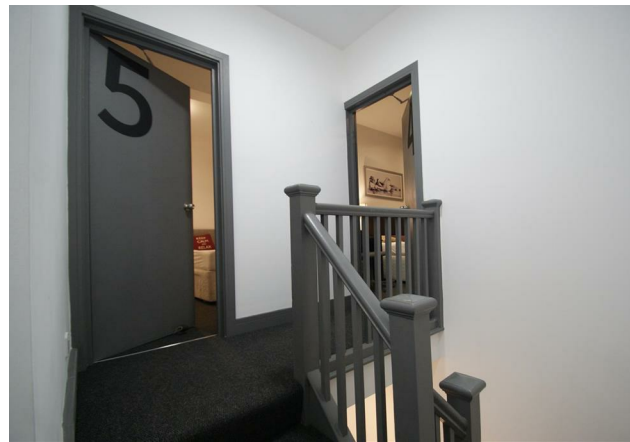
A room to rent in York Street, central Rugby. Close to the station and minutes from town. Very stylish co-living property with a double bedroom available for £295 every 2 weeks or £625 per month. All inclusive of bills and access to 350mb WIFI. Warm house with a local shop less than a 1-minute walk. Two shower rooms, large communal space, landscaped garden with bike store. Couples are an extra charge.



### Room 2

A double room for £550 per month with a wardrobe, mini desk and double bed and fitted mirror wardrobe.





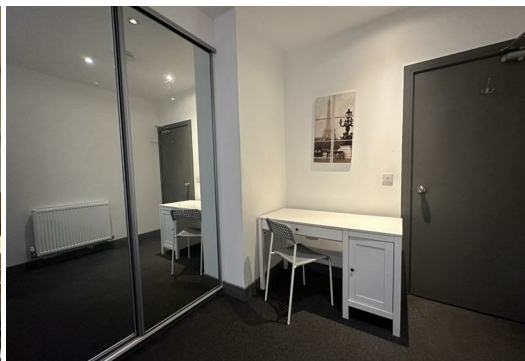


GROSS INTERNAL AREA  
 FLOOR 1: 891 sq ft, 83 m<sup>2</sup>, FLOOR 2: 637 sq ft, 59 m<sup>2</sup>  
 TOTAL: 1528 sq ft, 142 m<sup>2</sup>  
 SIZES AND DIMENSIONS ARE APPROXIMATE, ACTUAL MAY VARY.





- Stylish shared house
- Bike store
- Double Bedroom
- Spacious communal space
- Close to Rugby Station
- Two bathrooms
- Landscaped garden
- WiFi included
- Close to station
- Available Now



## YORK STREET, RUGBY

Viewing - Arrangements can be made by Complete Estate Agents on: 01926 887723

Energy Efficiency Rating	Current	Potential
Very energy efficient - lower running costs		
(92 plus) <b>A</b>		
(81-91) <b>B</b>		
(69-80) <b>C</b>		
(55-68) <b>D</b>		
(39-54) <b>E</b>		
(21-38) <b>F</b>		
(1-20) <b>G</b>		
Not energy efficient - higher running costs		
England & Wales	EU Directive 2002/91/EC	

1 Binswood Street, Leamington Spa, Warwickshire, CV32 5RW  
 Tel: 01926 887723  
 sales@complete247.co.uk  
 www.complete247.co.uk

**complete** ●●●  
 SALES & LETTINGS