



Bright Studio Apartment with Lift and Porter in Prime South Kensington

Set within the iconic Donovan Court, this bright and well-proportioned studio apartment is located in a desirable Art Deco mansion block in the heart of South Kensington.

Offering a practical layout with a separate kitchen, generous living/sleeping area and ample built-in storage, the flat also benefits from lift access, a porter, and secure entry.

Perfectly positioned moments from the shops, cafés and excellent transport links of Fulham Road, Gloucester Road and South Kensington, it makes for an ideal first home, rental investment or London pied-à-terre.

NB: The main image has been virtually staged to demonstrate the potential.





ACCOMMODATION

The studio offers a well-designed living space with a separate kitchen and bathroom, set within a well-maintained Art Deco building that benefits from lift access and a daily porter service within a safe and secure building.

LOCATION

Donovan Court enjoys a prime location on Drayton Gardens, nestled between South Kensington and Chelsea, just moments from the lively stretch of Fulham Road known as "The Beach" — home to a fantastic array of cafés, restaurants, boutiques and cinemas. The area offers a perfect balance of cultural charm and everyday convenience, with the Natural History Museum, V&A and Hyde Park all within easy reach. Excellent transport links are provided by Gloucester Road and South Kensington stations (District, Circle and Piccadilly lines), making it a superb base for access to the West End, the City and Heathrow Airport.



Property Type: Flat/Apartment

Construction Materials: Brick

Utilities: Add text here

Electricity: Mains supply

Heating: Gas Mains supply

Sewerage: Mains supply

Broadband: Please check Ofcom broadband checker

Mobile Signal Coverage: Please check Ofcom mobile coverage checker

Parking Arrangements: Street Parking Permit Required

Terms

Price: £430,000

Tenure: Long Leasehold

Lease: 82 years remaining

Council Name RBKC

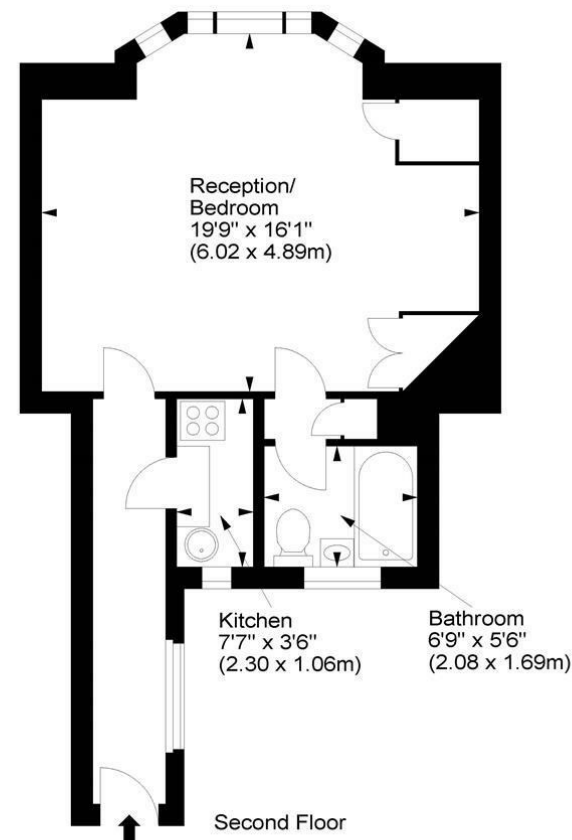
Council Tax Band: E

Service Charge: £2500 including central heating & hot water

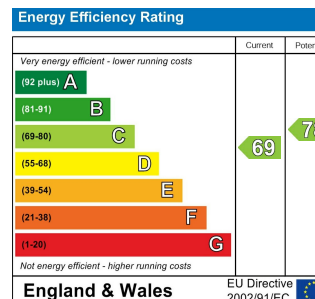
Ground rent: £100

14 Donovan Court, SW10 9QS

Approx. Gross Internal Area
440 Sq Ft - 40.88 Sq M



For illustration purposes only. Not to scale.
All measurements are taken and shown at floor level.
www.r3photography.co.uk © Photography / Floor Plans / Lease Plans / EPCs



FEATURES

- Portered mansion block
- Located on prestigious Drayton Gardens
- Second floor
- Lift access
- Ample built-in storage
- Rosalind Franklin, the scientist pivotal in discovering DNA's structure, lived in Donovan Court.



0207 370 4343

www.whiteestates.com

sk@white-estates.co.uk

176 Old Brompton Road, London, SW5 0BA