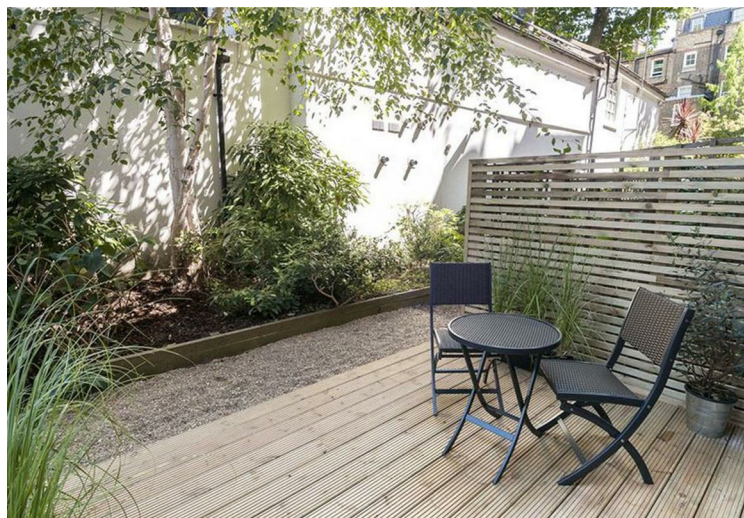
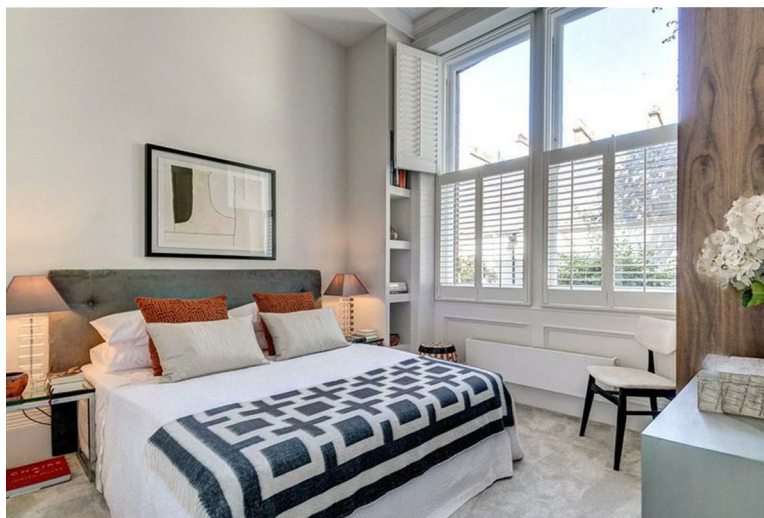


ROSARY GARDENS | LONDON SW7



GUIDE PRICE | £850 PER WEEK

A beautifully presented two-bedroom apartment located in the prestigious Rosary Gardens, South Kensington. Spanning 620 sq ft, this charming home features a spacious reception area, a separate storage room, and high-level storage solutions. The property boasts a private garden, offering a tranquil outdoor retreat, enhancing the sense of space and greenery in this sought-after location.

Please note that the photos shown were taken prior to the current tenancy. Offered on an unfurnished basis. Available 23rd of May.



- Spacious Two-Bedroom Apartment – Well-proportioned rooms with ample natural light.
- Private Garden – Exclusive outdoor space.
- Spacious Reception Room/ Open-Plan kitchen
- Ample Storage – Separate storage room plus high-level storage throughout.
- Prime South Kensington Location – Situated in a quiet yet central area with easy access to shops, cafés, and cultural hotspots.
- Excellent Transport Links – Moments from Gloucester Road and South Kensington Stations for convenient citywide travel.
- Council Tax Band: F/ EPC Rating: C
- The Royal Borough of Kensington & Chelsea
- G.I.A 57.5 Sq M/ 620 Sq Ft



Energy Efficiency Rating

	Current	Potential
Very energy efficient - lower running costs		
(92 plus) A		
(81-91) B		
(69-80) C		
(55-68) D		
(39-54) E		
(21-38) F		
(1-20) G		
Not energy efficient - higher running costs		
England & Wales	EU Directive 2002/91/EC	

Terms Deposit: £4,250

Council Name RBKC

Council Tax Band: F

**WHITE
ESTATES**

sk@white-estates.co.uk

176 Old Brompton Road, London, SW5 0BA

0207 370 4343

<https://www.white-estates.co.uk/>