



GLEDHOW GARDENS | PRIME SOUTH KENSINGTON SW5

CALL/EMAIL NOW TO BOOK A VIEWING TODAY OR ENQUIRE FURTHER

This beautifully presented and generously proportioned three-bedroom flat is located in the highly sought-after Gledhow Gardens, within the exclusive, internationally renowned garden square neighbourhoods of South Kensington, next to Bolton Gardens. Offering an elegant blend of luxury and comfort, the property benefits from access to a magnificent landscaped communal garden, providing a serene green retreat in one of London's most prestigious locales.

The third bedroom, situated on the upper floor, with stunning views of the gardens features a terrace — an ideal setting for dining and relaxation. All three bedrooms include en-suite bathrooms, and the property boasts abundant built-in storage throughout, designed to suit a range of lifestyles. Immaculately finished and maintained, the flat is in pristine condition, ready to move in.

Vendor Comments: 'It's south facing, you get incredible sun exposure from dawn till sunset. It made a huge difference to our life. It's great for sun bathing. The third bedroom is located up some stairs on the top floor, and benefits from an en-suite shower-room as well as French doors onto an exceptionally sunny south-facing balcony/roof terrace.'





LOCATION

Residents of Gledhow Gardens enjoy the privilege of private garden access, offering a peaceful, elevated lifestyle in the heart of South Kensington's luxury garden square district. Ideally positioned near renowned international schools, a variety of shops, restaurants, and local amenities, the property is also well-connected by superb transport links at South Kensington, Earl's Court, and Gloucester Road stations. This apartment offers the perfect combination of refined living and convenience, making it an exceptional home or investment opportunity.





OVER LOOKING PRIVATE GLEDHOW GARDENS



Terms

Price: £2,250,000

Tenure: Leasehold - Share of Freehold

Lease: 999 years from 1st January 2002

Council Name Royal Borough of Kensington and Chelsea

Service Charge: £5,367.20 (25 Mar 24 - 24 Mar 25)

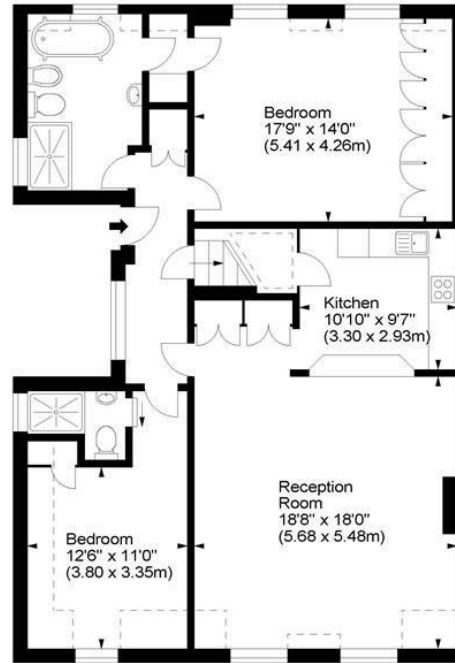
Ground Rent: n/a

Council Tax Band: G

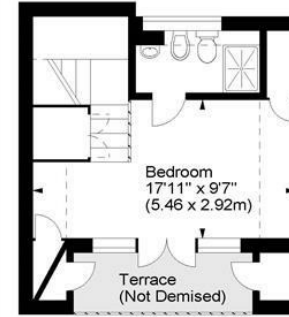
Gledhow Gardens, SW5



Approx. Gross Internal Area
1451 Sq Ft - 134.80 Sq M

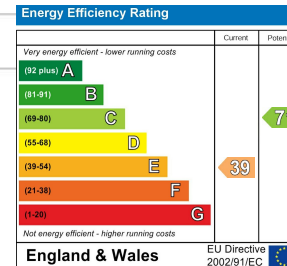


Third Floor



Fourth Floor

For illustration purposes only. Not to scale.
All measurements are taken and shown at floor level.
www.r3photography.co.uk © Photography / Floor Plans / Lease Plans / EPCs



FEATURES

- 3 Bedrooms - 3 bathrooms
- Plenty of built-in Storage
- Terrace Overlooking Gardens (Non-Demised)
- Direct Access to Communal Gardens from the Common Parts
- The garden is incredible
- You feel like you live in the countryside from the living room and the room upstairs
- Easy to park your car, usually in front of the house
- For couples with kids or willing to have kids, there is a playground area in the garden and you are in the catchment area of Bousfield public school (very good academic reputation)



0207 370 4343

<https://www.white-estates.co.uk/>

sk@white-estates.co.uk

176 Old Brompton Road, London, SW5 0BA