



CALL OR EMAIL US TO ENQUIRE AND MAKE AN APPOINTMENT TO VIEW

SHORT LET - AVAILABLE NOW - ALL BILLS INCLUSIVE SUBJECT TO REASONABLE CAP. This rare to the market, exceptionally well presented and spacious one bedroom apartment offers generous reception/dining and bedroom space with bathroom & overhead shower.

Entered via the raised ground floor of a grand Victorian fronted facade, with immaculate common parts, the apartment is located between the SECOND FLOOR. The kitchen is fully equipped separately with ample dining space within the LARGE living area with HIGH CEILINGS; the bathroom has been tastefully made and the general feeling is one of warmth, space and harmony. The delightful sash windows allow plenty of light as well as privacy which compliment beautifully the neutral decor and furnishing; the setting is complete with access to a wealth of cultural and entertainment facilities and amenities within easy reach. The property also offers excellent storage with wardrobe wall and entrance hall cupboards and kitchen cupboards.

Close by to Gloucester Road and its shops, restaurants and underground as well as South Kensington with it's concentration of spectacular museums. Hyde Park & Kensington Gardens are a short stroll away within 20 mins. Knightsbridge shopping is also a short 5 minute cab ride away. The apartment is located within a desirable residential area. Strongly recommended.



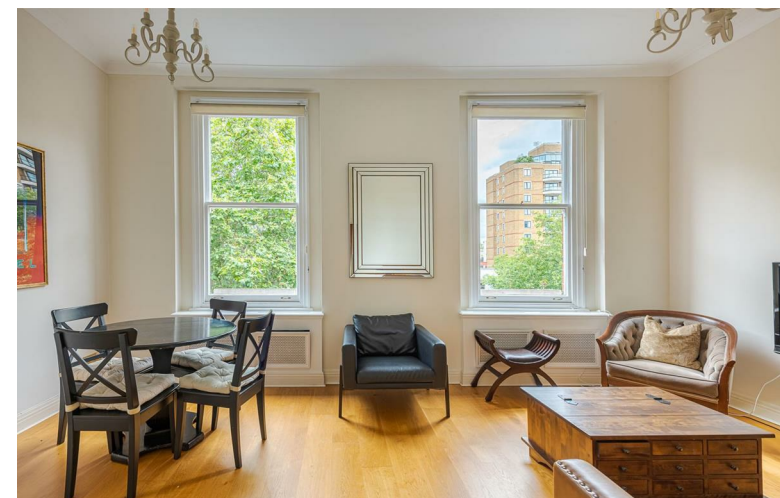
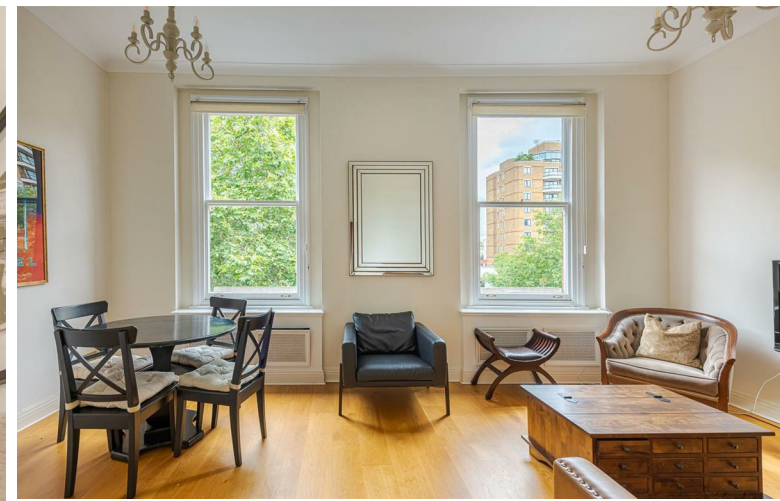


ACCOMMODATION

Reception Room: Kitchen: Bedroom: Bathroom

LOCATION

Courtfield Road SW7 is within easy reach of a wide variety of high end shops and facilities of South Kensington, the shops of Gloucester Road and the Old Brompton Road, and within walking distance of Kensington Gardens and Hyde Park. With direct links via the London Underground from nearby Gloucester Road and S.Kensington stations to the City, the West End and Heathrow, the apartment also benefits from excellent connections via the A4, M4 and M25 and is close to the extensive cycle network linking the area to the West End and City through London's parks.





CLOSE TO EXCELLENT AMENITIES



Terms

SHORT LET: £875 Per Week

Terms Deposit: 5 Weeks

Local Authority: The Royal Borough of Kensington and Chelsea

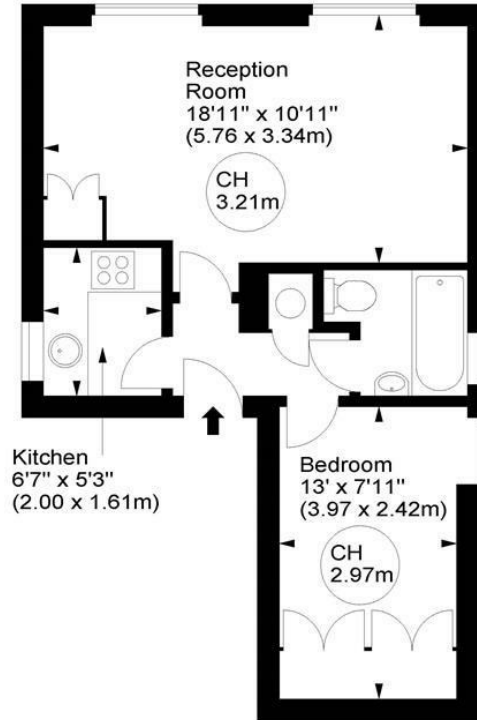
Council Tax Band: F

Courtfield Road, SW7

Key :
CH - Ceiling Height

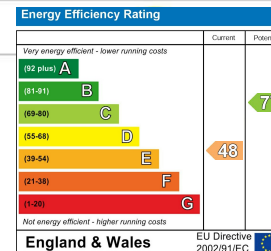


Approx. Gross Internal Area
424 Sq Ft - 39.39 Sq M



Second Floor

For illustration purposes only. Not to scale.
All measurements are taken and shown at floor level.
www.r3photography.co.uk © Photography / Floor Plans / Lease Plans / EPCs



FEATURES

- SHORT LET AVAILABLE NOW
- Large Bright Reception/Dining Room with Leafy Outlook
- Double Bedroom with Wardrobe Wall
- Fully Equipped Separate Kitchen
- Bathroom with overhead Shower
- Wood Flooring & Fully Furnished
- The Royal Borough of Kensington and Chelsea
- All Bills Included
- Beautiful Victorian Building
- Amazing Location!



0207 370 4343

<https://www.white-estates.co.uk/>

sk@white-estates.co.uk

176 Old Brompton Road, London, SW5 0BA