



CRESSWELL GARDENS | PRIME SOUTH KENSINGTON SW5

STUNNING GARDEN SQUARE WITH DIRECT ACCESS TO CRESSWELL GARDENS

OUTSTANDING GARDEN SQUARE DUPLEX APARTMENT:

Situated in this Prime Central London area of South Kensington, within a highly coveted residential neighbourhood next door to The Boltons SW10. This is an exquisite and rare THREE BEDROOM duplex apartment. Forming part of a handsome terrace of red brick fronted Victorian houses that enclose Cresswell Gardens.

On entering the apartment and facing west from the entrance hall, the opulent grand reception room facing the garden greets you, with great volume (CH 3.18 m) and with a picturesque bay window framing the magnificent Cresswell Gardens, to which this property enjoys direct access via the reception room, from which residents can access the lush green private enclosed space of the communal gardens, making this an ideal property for an individual, couple or family.

The large kitchen with dining/breakfast area is positioned opposite the reception and also features 3.51 m ceiling height and bay window. To the first floor is a magnificent main bedroom and en-suite bathroom with, bay window, French doors and wraparound balcony to admire the gardens.

There are two further bedrooms with wardrobes and high ceilings (c. 3.36 - 3.69 m) and a family bathroom with a guest WC on the ground floor.

This attractive property would cater to the most discerning tastes, with great wall space for hanging art, large open rooms and easy garden access for entertaining guests and receiving family.





ACCOMMODATION

Entrance Hall | Large Reception/Dining Room | Direct Access to Communal Gardens | Wraparound Balcony | Large Kitchen/Breakfast Room | Guest WC | 3 Bedrooms | 2 Bathrooms (Family/Guest & En-Suite) | Exceptional High Ceilings Access To Communal Gardens

LOCATION

The property is within accessible reach of the museum quarter, Chelsea & Knightsbridge shopping, elite schools and the desired place to live for those working in the City and the West End that can commute via Gloucester Road Underground with a wealth of other local facilities and amenities. Call or email us now to discuss further.



CALL/EMAIL US NOW TO ENQUIRE OR BOOK AN APPOINTMENT TO VISIT



Terms

Price: £1,800 Per Week

Terms Deposit: 6 weeks rent

Council Name: The Royal Borough of Kensington & Chelsea

Council Tax Band: H

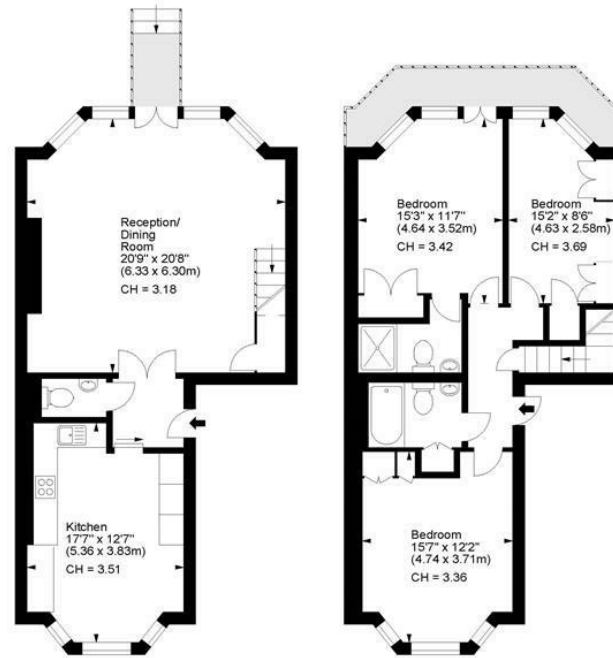
EPC Rating: C

Cresswell Gardens, SW5



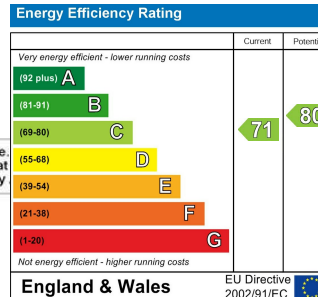
Approx. Gross Internal Area
1310 Sq Ft - 121.70 Sq M

Key :
CH - Ceiling Height



Ground Floor

First Floor



For illustration purposes only. Not to scale. All measurements are taken and shown at www.r3photography.co.uk © Photography



FEATURES

- 3 Bedrooms
- 2 Bathrooms (Family/Guest & En-Suite)
- First floor wraparound balcony
- Grand reception room/ Over 3 meter ceiling
- Large kitchen
- G.I.A 1310 Sq Ft / 121.70 Sq M
- Spectacular views over the gardens/ West facing reception and principal bedroom
- Direct access to Cresswell Gardens
- Council Tax Band: H/ EPC Rating C
- Ideal for individual, couple or family home



0207 370 4343

<https://www.white-estates.co.uk/>

sk@white-estates.co.uk

176 Old Brompton Road, London, SW5 0BA