



WHITE
ESTATES

BOLTON GARDENS | SOUTH KENSINGTON SW5

GORGEOUS TOP FLOOR APARTMENT IN PRIME LOCATION

A gorgeous top floor apartment in South Kensington, set in an attractive period house overlooking communal Gardens.

The property boasts a large reception room with a beautiful open plan kitchen, three bedrooms and two stylish bathrooms.

Bolton Gardens is a much sought after address situated within moments of all the amenities and transport links of Earls Court and Gloucester Road.



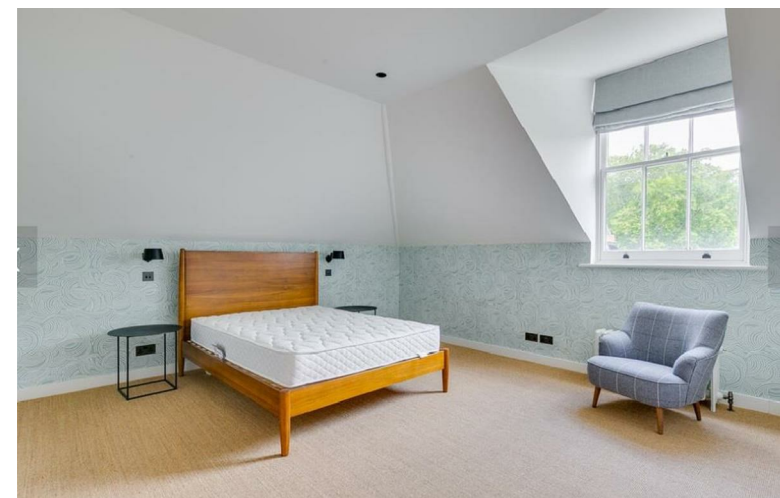


ACCOMMODATION

3 Bedrooms: 2 Bathrooms: Large Reception Room: Open Plan Kitchen

LOCATION

Boltons Gardens is within easy reach of a wide variety of high-end shops and facilities of South Kensington, the shops of Gloucester Road and Old Brompton Road, and within walking distance of Kensington Gardens and Hyde Park. With direct links via the London Underground from nearby Gloucester Road (District, Circle, and Piccadilly lines) and Earls Court (District and Piccadilly lines).





CLOSE TO EXCELLENT AMENITIES



Terms

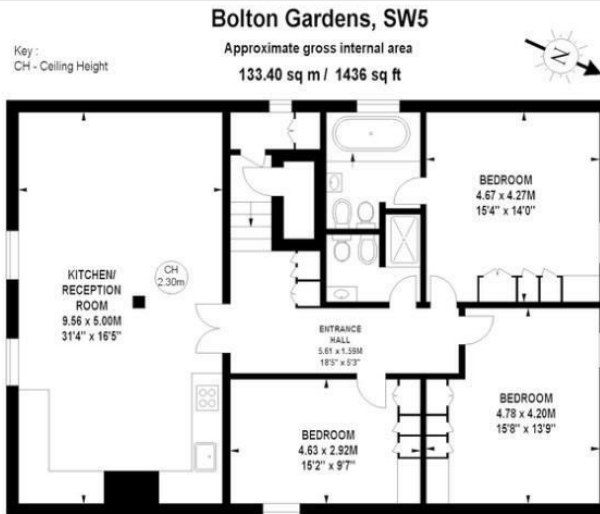
Price: £1,400 Per Week

Terms Deposit: 6 Weeks Rent

Council Name: Royal Borough Of Kensington & Chelsea

Council Tax Band: G

EPC Rating: D



Third Floor

The floor plan is not to scale and measurements and areas shown are approximate and therefore should be used for illustrative purposes only. The plan has been prepared in accordance with the RICS code of Measuring Practice and whilst we have confidence in the information produced, it must not be relied on. If there is any aspect of particular importance, you should carry out or commission your own inspection of the property.
Copyright of FeaturePRO.

Energy Efficiency Rating

	Current	Potential
<i>Very energy efficient - lower running costs</i>		
(92 plus) A		
(81-91) B		
(69-80) C		
(55-68) D	61	65
(39-54) E		
(21-38) F		
(1-20) G		
<i>Not energy efficient - higher running costs</i>		
England & Wales	EU Directive 2002/91/EC	

FEATURES

- 3 Bedrooms
- 2 Stylish Bathrooms
- Large Reception Room
- Entrance With Cloakroom
- Open Plan Kitchen
- EPC Rating: D
- Council Tax Band: G
- Royal Borough of Kensington & Chelsea
- G.I A 133,40 Sq M/ 1436 Sq F
- Access to Communal Gardens



0207 370 4343

<https://www.white-estates.co.uk/>

sk@white-estates.co.uk

176 Old Brompton Road, London, SW5 0BA