



**Water Furlongs Purton Road – SN6 6JA**  
Cricklade

Guide Price **£675,000**

**mcfarlane**  
property.com



# Water Furlongs – Cricklade

Wiltshire

- Sought After Cricklade Position
- Expansive Three Bedroom Detached Bungalow (1700 Sq Ft estimated).
- Private Road and Access
- Expansive & Flexible Accommodation
- Bright and Airy Feel Throughout
- kitchen Breakfast + Dining Room + Utility Room
- Living Room + Conservatory
- Family Bathroom PLUS Shower Room

Expansive detached bungalow in secluded Cricklade location. Bright & airy with 3 bedrooms, conservatory, garage, and parking. Contact McFarlane Cricklade 01793 751 044.





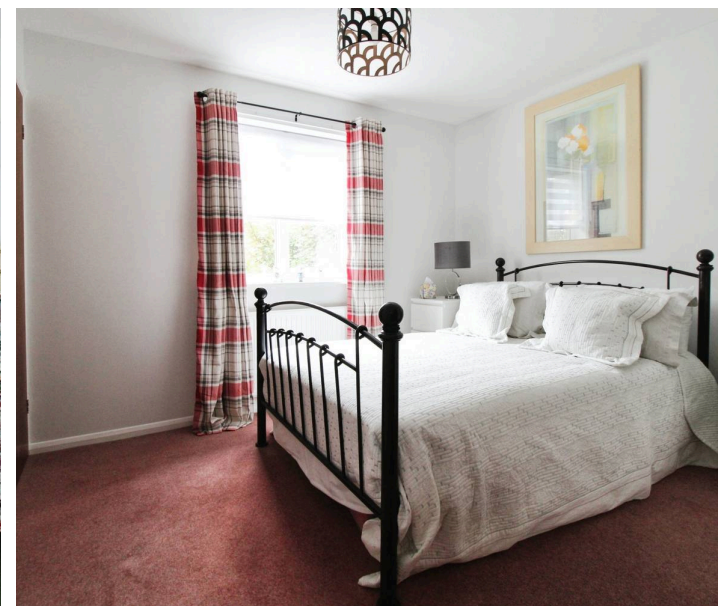
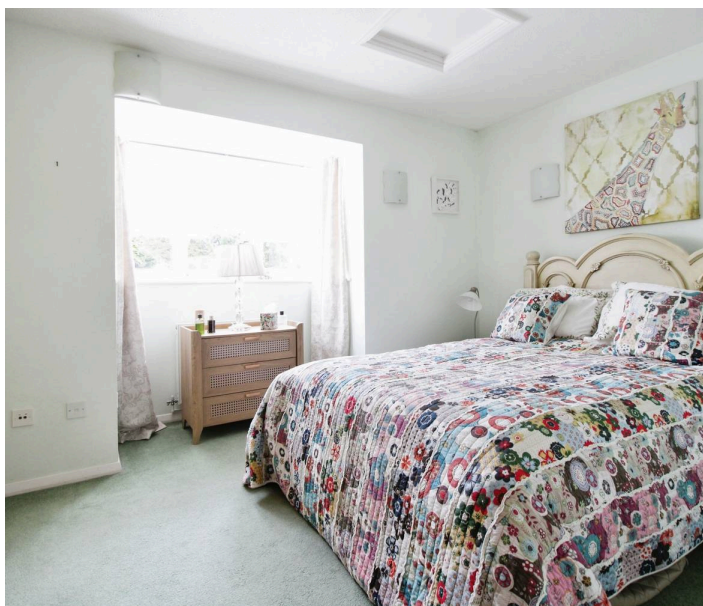
## Water Furlongs – Purton Road

Cricklade Wiltshire

Cricklade known as the first town on the Thames and positioned ideally between the capital of the Cotswold's Cirencester and the larger market town of Swindon. Cricklade boasts a bustling High Street with a plethora of amenities. The famous water meadow near to the High Street has the renowned snake headed fritillaries that bloom annually this site is now a SSSI and NNR. Cricklade is positioned near the A419 with further access to motorway networks including M4 and M5.

Council Tax band: D

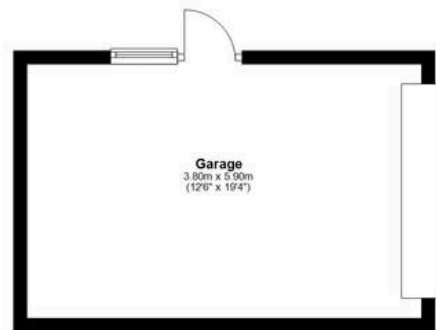
Tenure: Share of Freehold



**mcfarlane**  
property.com

## Ground Floor

Approx. 160.2 sq. metres (1724.3 sq. feet)



Total area: approx. 160.2 sq. metres (1724.3 sq. feet)

Agents Note: Whilst every care has been taken to prepare these sales particulars, they are for guidance purposes only. All measurements are approximate and whilst every care has been taken to ensure their accuracy, they should not be relied upon and potential buyers are advised to recheck the measurements.