



Reids Piece – SN5 4AY

Purton

Guide Price **£250,000**

mcfarlane
property.com

Reids Piece

Purton

A three bedroom house middle terrace home (in need of updating and modernisation), in a popular cul-de-sac in the sought after larger village of Purton in between Cricklade and Royal Wootton Bassett. This fabulous opportunity offers a discerning purchaser the chance to update and improved to their own taste and style.

This rare opportunity offers one of the larger plots in the development and as such boasts extensive gardens front and rear. The front garden is very generous and we feel would offer ideal off road parking (subject to planning) whilst still leaving a decent sized front garden.

A summary of accommodation briefly comprises: Entrance Hallway, Living Room, Kitchen breakfast Room, Rear Lobby / Lean to. Plus Ground Floor Storage Shed. The First Floor boasts Three Generous Bedrooms, Bathroom with Separate WC.



Reids Piece

Purton, Swindon

- Sought After Purton Position
- Generous Plot (Front + Rear Gardens)
- Same Family Ownership Since New
- Three Generous Bedrooms
- Red Brick Family Home
- Living Room + Kitchen Breakfast Room
- Lean To and Storage Room to Rear

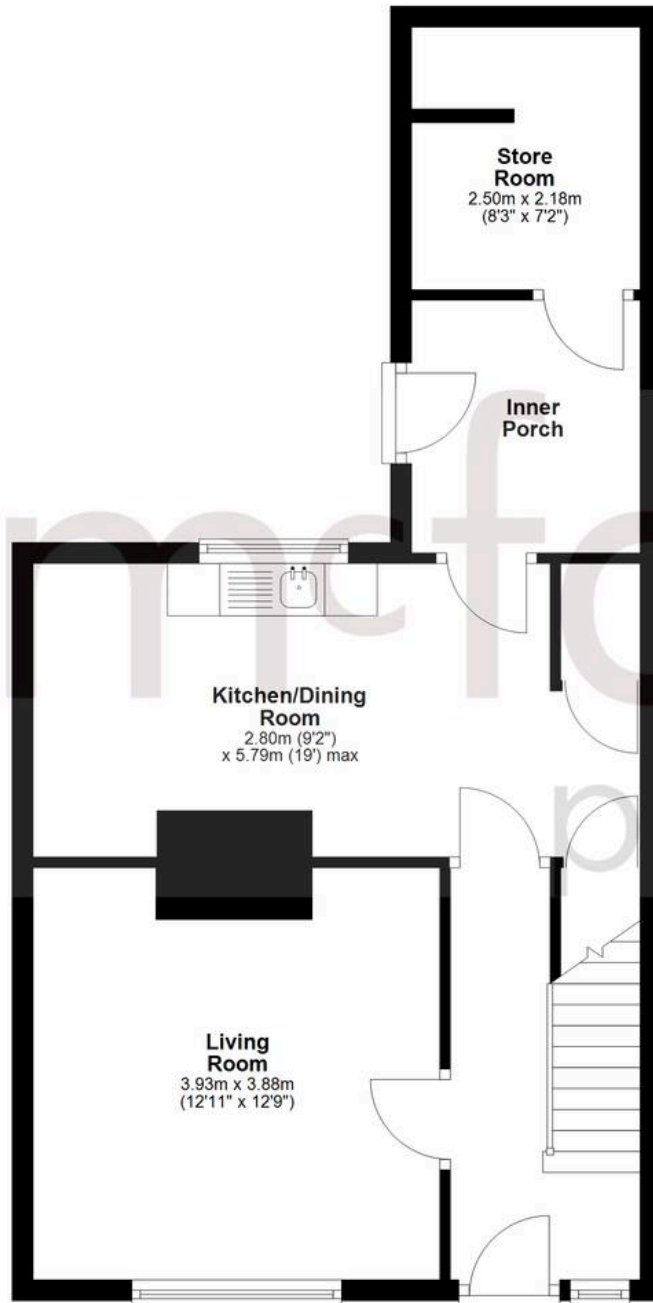


mcfarlane
property.com



Ground Floor

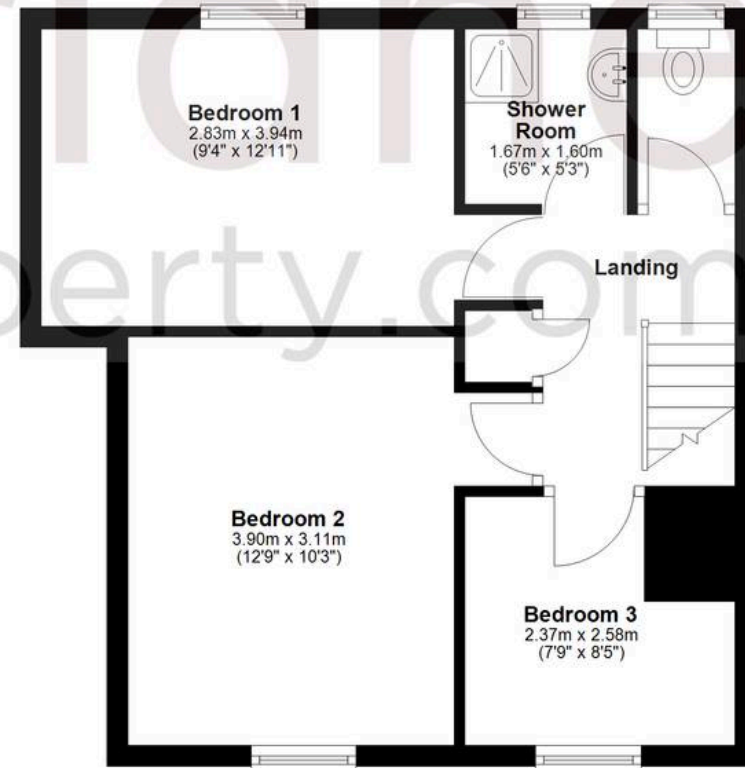
Approx. 50.7 sq. metres (545.6 sq. feet)



Agents Note: Whilst every care has been taken to prepare these sales particulars, they are for guidance purposes only. All measurements are approximate and are for general guidance purposes only and whilst every care has been taken to ensure their accuracy, they should not be relied upon and potential buyers are advised to recheck the measurements.

First Floor

Approx. 41.8 sq. metres (449.7 sq. feet)



Total area: approx. 92.5 sq. metres (995.4 sq. feet)