



Chelworth Road, Cricklade – SN6 6HL
Swindon

Guide Price **£650,000**

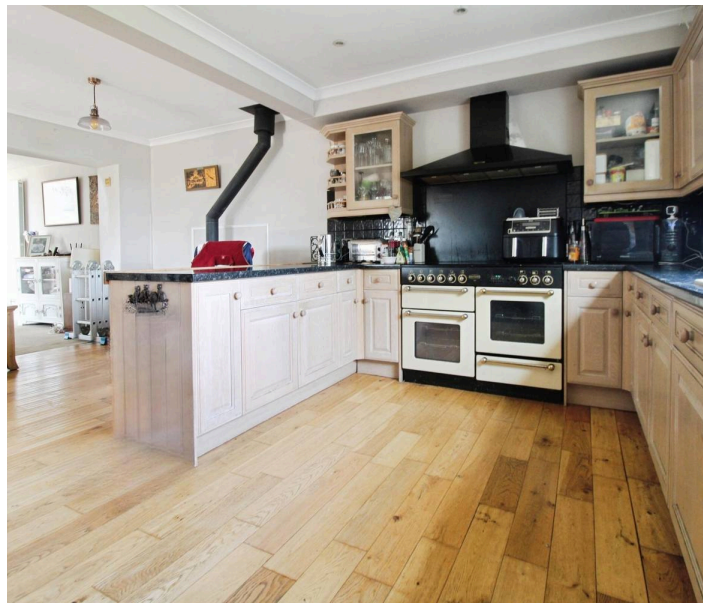
mcfarlane
property.com

Chelworth Road

Cricklade, Swindon

- Four Bedroom Family Home
- Flexible Accommodation Over Two Floors
- Bright and Airy Feel Throughout
- Paddock Adjoining the Property
- Open Plan Kitchen / Family Room
- The Paddock (with yard) is Approximately 1.9 Acres.

Rare opportunity to purchase a FOUR Bedroom family home with paddock near Cricklade. Versatile accommodation, extended, master bedroom with stunning views, expansive gardens with access to paddock.



Chelworth Road

Cricklade, Swindon

Cricklade is a historic former market town in North Wiltshire and Ideally placed for the neighbouring A419. Cricklade is also known as the first town on the Thames and boasts a bustling high street with a variety of amenities. The nationally renowned North Water Meadow is close by with the snake headed fritillaries that bloom annually. This has been classified as a SSSI & NNR (Site of Special Scientific Interest & National Nature reserve).

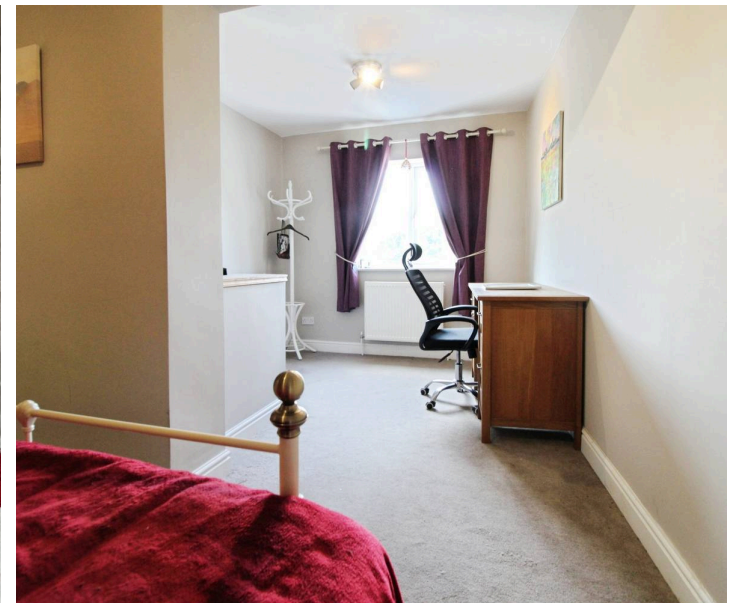
Council Tax band: C

Tenure: Freehold

EPC Energy Efficiency Rating: E

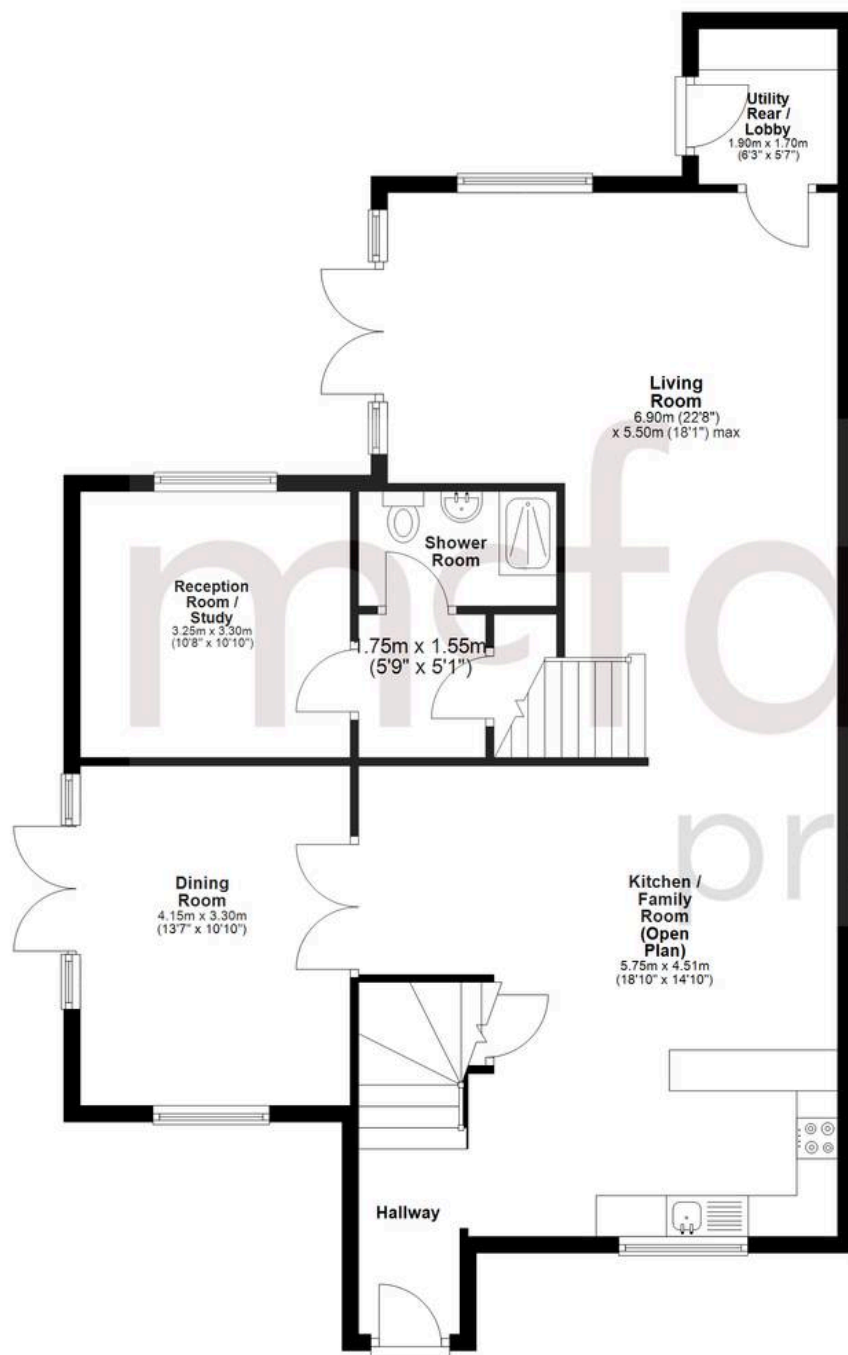
EPC Environmental Impact Rating: E

mcfarlane
property.com



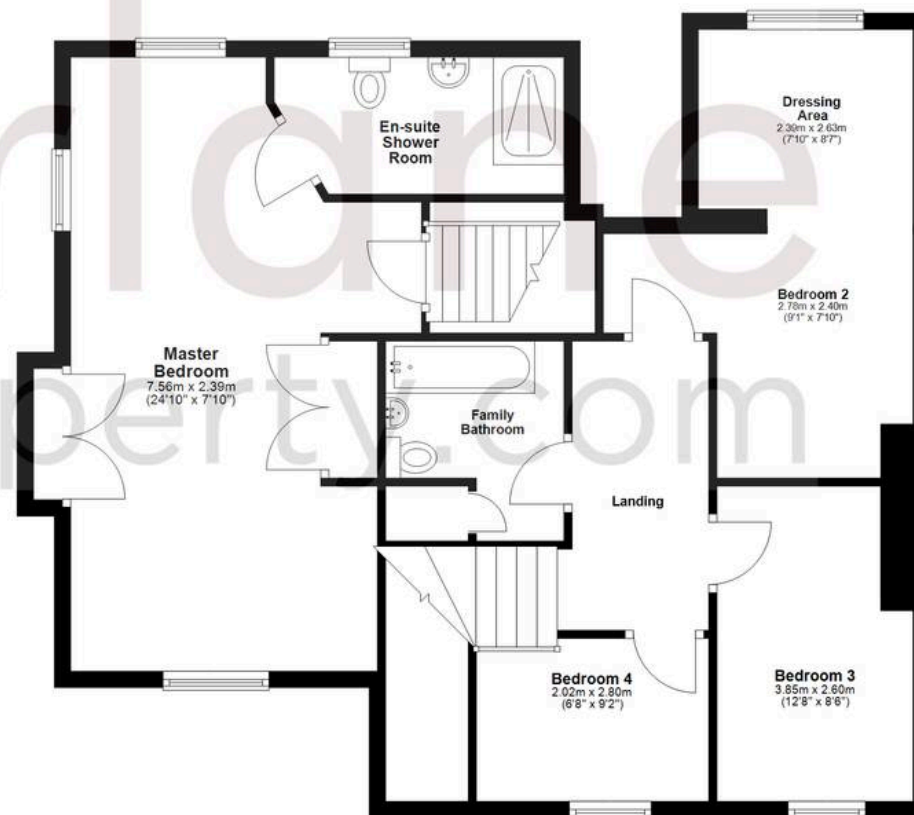
Ground Floor

Approx. 103.7 sq. metres (1116.5 sq. feet)



First Floor

Approx. 80.8 sq. metres (869.9 sq. feet)



Agents Note: Whilst every care has been taken to prepare these sales particulars, they are for guidance purposes only. All measurements are approximate are for general guidance purposes only and whilst every care has been taken to ensure their accuracy, they should not be relied upon and potential buyers are advised to recheck the measurements.

Total area: approx. 184.5 sq. metres (1986.4 sq. feet)