



**The Yew, Restrop Road, Purton**  
Swindon

**£800,000**





## The Yew, Restrop Road

Purton, Swindon

Presenting an exceptional opportunity to reside in a 5 BEDROOM DETACHED HOUSE, this exquisite property is a NEW HOME that exudes a blend of comfort and contemporary elegance. Boasting a remarkable DETACHED design, this residence showcases a spacious KITCHEN / BREAKFAST / FAMILY ROOM, providing the perfect setting for culinary delights and family gatherings. The property further impresses with its inviting SITTING ROOM, ideal for relaxation, a versatile STUDY for productive work-from-home days, and a convenient UTILITY AND WC. Upstairs, the FIVE BEDROOMS offer ample accommodation, including TWO EN-SUITES and a stylish FAMILY BATHROOM. Additionally, this residence features a DOUBLE GARAGE and 2 PARKING SPACES for ultimate convenience.

Stepping outside, the property's exterior is a true haven for outdoor enthusiasts. Whether enjoying a morning coffee or hosting a barbeque, the outdoor space offers a seamless extension of the indoor living areas, enhancing the overall lifestyle experience of this distinguished property. With its striking architecture and thoughtfully crafted outdoor areas, this property epitomises modern living at its finest, promising a blend of comfort, luxury, and functionality for discerning buyers seeking a premium residential experience.



## Entrance Hall

## Sitting Room

13' 7" x 17' 11" (4.13m x 5.45m)

## Kitchen / Breakfast / Family Room

28' 7" x 15' 2" (8.71m x 4.62m)

## Dining Room

13' 6" x 17' 11" (4.11m x 5.45m)

## Study

8' 3" x 9' 2" (2.51m x 2.79m)

## Utility and WC

## Landing

## Bedroom 1

15' 4" x 12' 8" (4.68m x 3.86m)

## En-Suite

## Bedroom 2

10' 8" x 13' 4" (3.26m x 4.06m)

## En-Suite

## Bedroom 3

14' 3" x 9' 2" (4.34m x 2.80m)

## Bedroom 4

11' 8" x 11' 5" (3.55m x 3.49m)

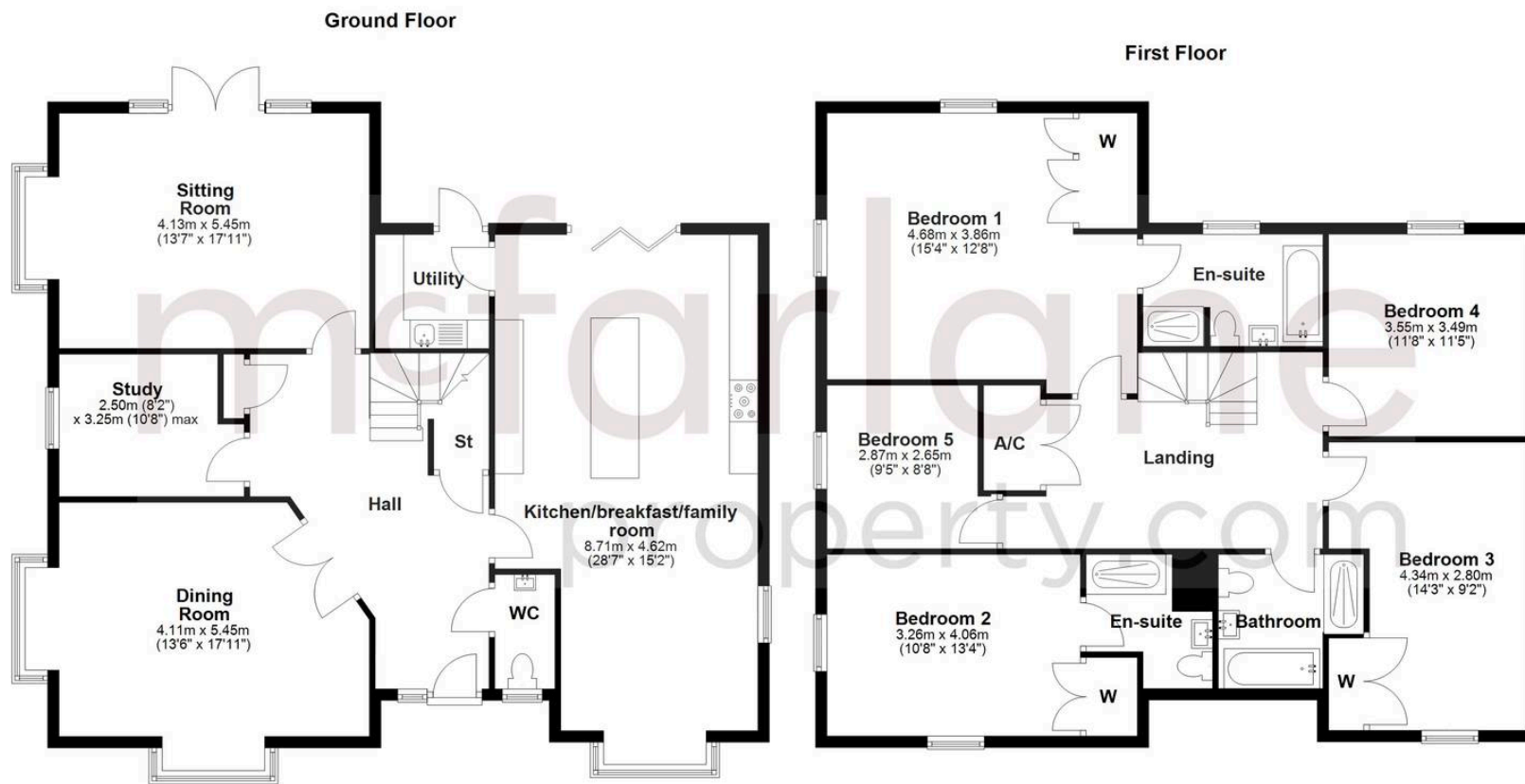
## Bathroom

## Bedroom 5

9' 5" x 8' 8" (2.87m x 2.65m)







## McFarlane Sales & Lettings

Cricklade Sales 36 High Street, Cricklade - SN6 6AY

01793 751044 • [cricklade@mcfarlaneproperty.com](mailto:cricklade@mcfarlaneproperty.com) • [www.mcfarlaneproperty.com/](http://www.mcfarlaneproperty.com/)