



Common Hill, Cricklade – SN6 6EZ
Swindon

Guide Price **£375,000**
mcfarlane
property.com

Common Hill

Cricklade, Swindon

- Expansive Driveway with Multiple Car Parking
- Light and Airy Feel Throughout
- THREE Bedrooms
- Detached Single Garage
- Room for Expansion & Extension
- Versatile and Spacious
- Generous Plot

A rare opportunity to purchase a property on the outskirts of Cricklade. This THREE bedroom semi detached home, is well presented and deceptive spacious family home offers flexible accommodation and has generous plot set back from the road. This is one not to be MISSED!

Call McFarlane, Sole Selling Agents on 01793 751 044 to book your appointment.



Common Hill

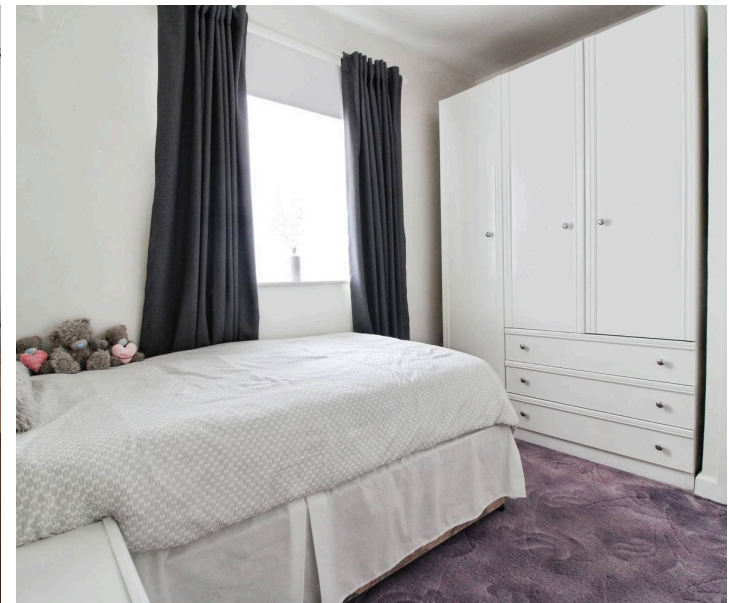
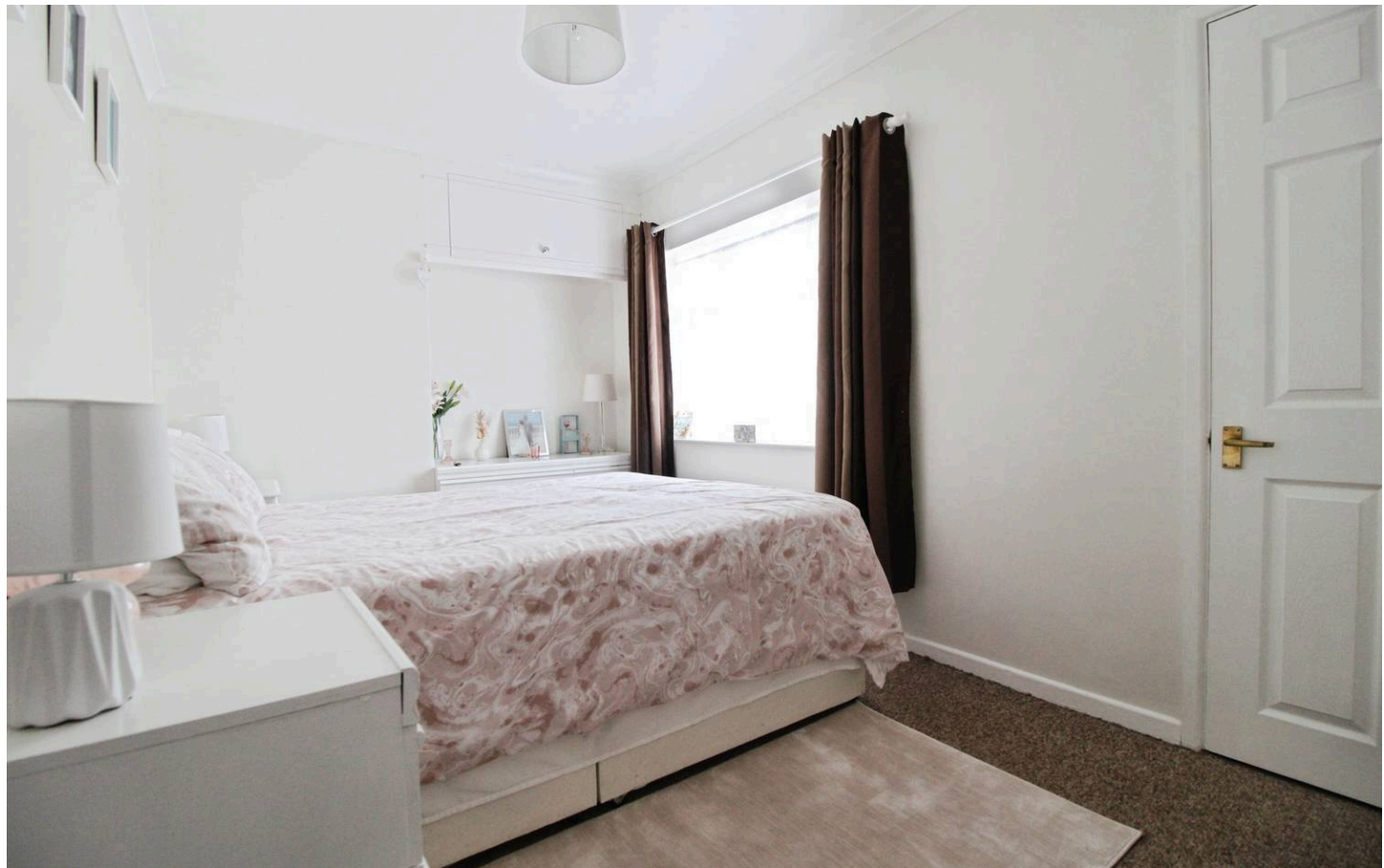
Cricklade, Swindon

Cricklade is a former market town that lies between Cirencester and Swindon (A419) and is nestled within the Cotswold Water Parks. Cricklade has a bustling High Street with a plethora of amenities with a definitive focus on community. Just off the High Street lies the (SSSI & NNR) North Meadow with the snake headed fritillaries that bloom annually. Cricklade boasts a GP Surgery and Dispensing Chemist, Opticians and Dentist. There are also a number of Pubs and Eateries on offer. The refurbished Leisure Centre (with Pool) is also a local Gem with sporting groups and communities.

Council Tax band: C

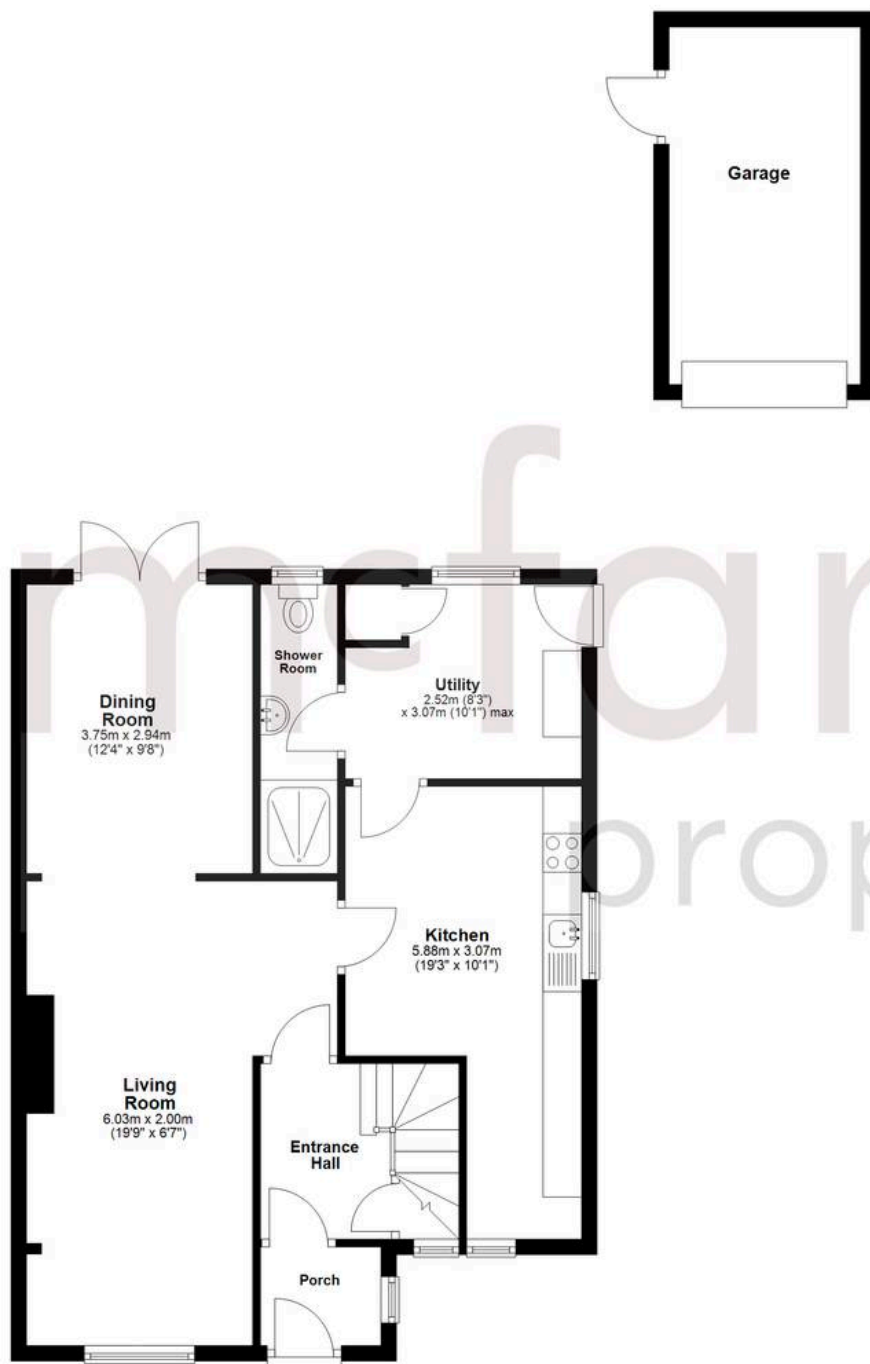
Tenure: Freehold

mcFarlane
property.com



Ground Floor

Approx. 79.2 sq. metres (852.0 sq. feet)

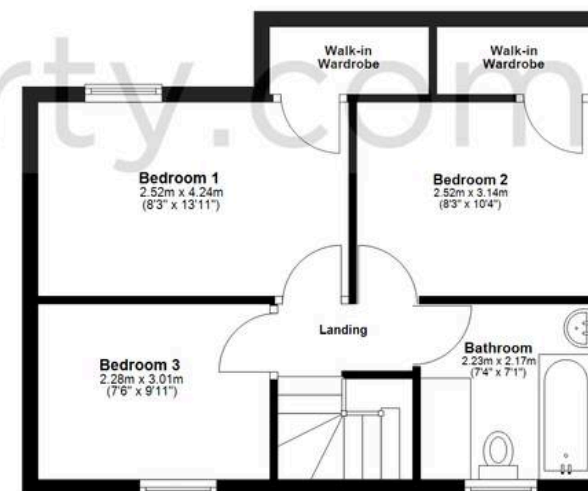


Garage

Agents Note: Whilst every care has been taken to prepare these sales particulars, they are for guidance purposes only. All measurements are approximate are for general guidance purposes only and whilst every care has been taken to ensure their accuracy, they should not be relied upon and potential buyers are advised to recheck the measurements.

First Floor

Approx. 40.2 sq. metres (432.6 sq. feet)



Total area: approx. 119.3 sq. metres (1284.6 sq. feet)