



The Grange, Western Gate, Marlborough Road
Swindon

£390,000

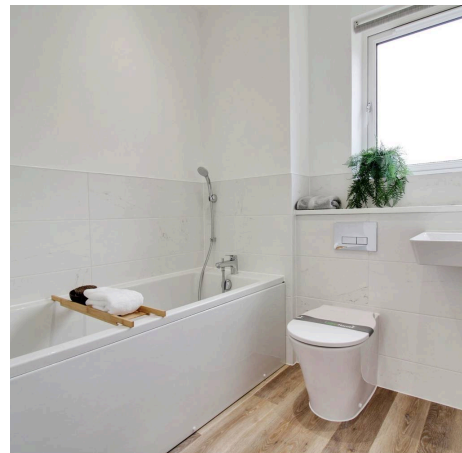
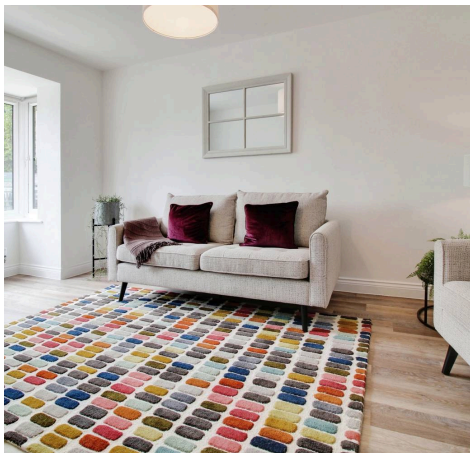


The Grange, Western Gate

Marlborough Road, Swindon

Nestled within a picturesque neighbourhood, this stunning Semi-Detached House offers the perfect blend of modern comfort and stylish design. The property boasts a generous £5000 MOVING COSTS PAID incentive, making it an even more enticing prospect for potential buyers looking to make a new home their own. With a NEW HOME feel and scheduled completion for SEP/OCT 2025, presenting an excellent opportunity to start a fresh chapter in a beautiful setting. The expansive interior features a LARGE OPEN PLAN LIVING, KITCHEN, AND DINING ROOM, creating a seamless flow ideal for both every-day living and entertaining. Accommodation comprises THREE DOUBLE BEDROOMS, along with a flexible single room suitable for use as a STUDY or additional bedroom. Spread across THREE STOREYS, this home offers ample space and privacy, with the convenience of TWO EN-SUITES, a FAMILY BATHROOM, and a WC to cater to the needs of residents and guests alike. Two designated PARKING SPACES add to the practicality and ease of every-day life, ensuring that coming home is always a stress-free experience.

- £5000 MOVING COSTS PAID
- NEW HOME
- READY TO MOVE INTO SEP/OCT 2025
- LARGE OPEN PLAN LIVING / KITCHEN / DINING ROOM
- THREE DOUBLE BEDROOMS AND SINGLE / STUDY
- SEMI DETACHED
- THREE STOREY HOME
- TWO EN-SUITES
- FAMILY BATHROOM AND WC
- 2 PARKING SPACES



Hall

Living

16' 11" x 9' 1" (5.15m x 2.78m)

Kitchen

11' 7" x 9' 5" (3.52m x 2.87m)

Dining

8' 4" x 6' 10" (2.53m x 2.09m)

WC

First Floor Landing

Bedroom 2

16' 3" x 15' 3" (4.96m x 4.66m)

Bedroom 4/Study

10' 8" x 6' 9" (3.25m x 2.05m)

Bathroom

Second Floor Landing

Bedroom 1

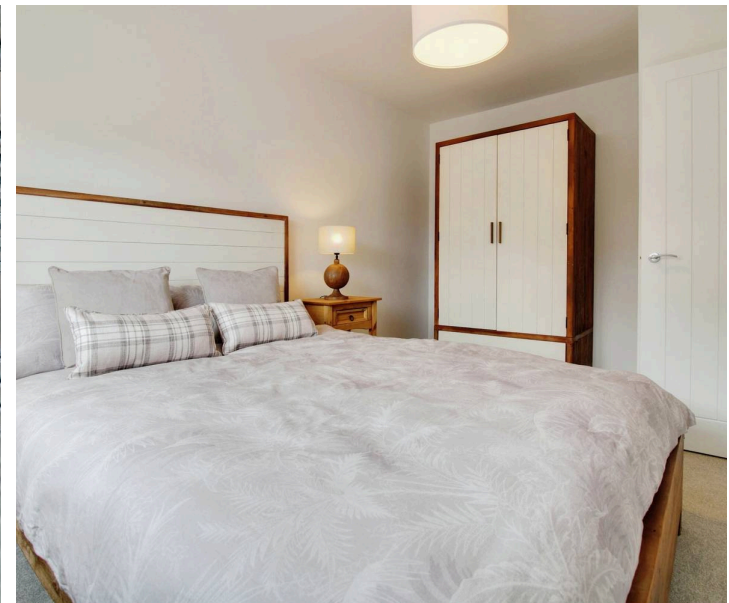
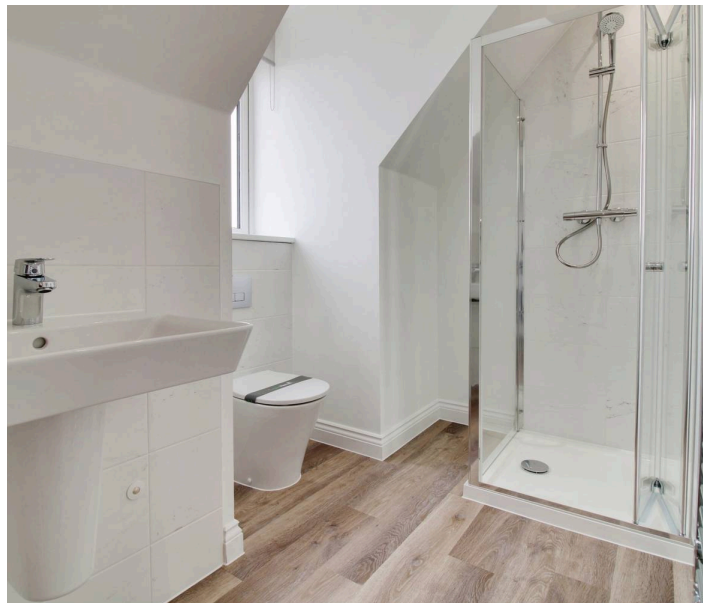
13' 5" x 9' 1" (4.09m x 2.78m)

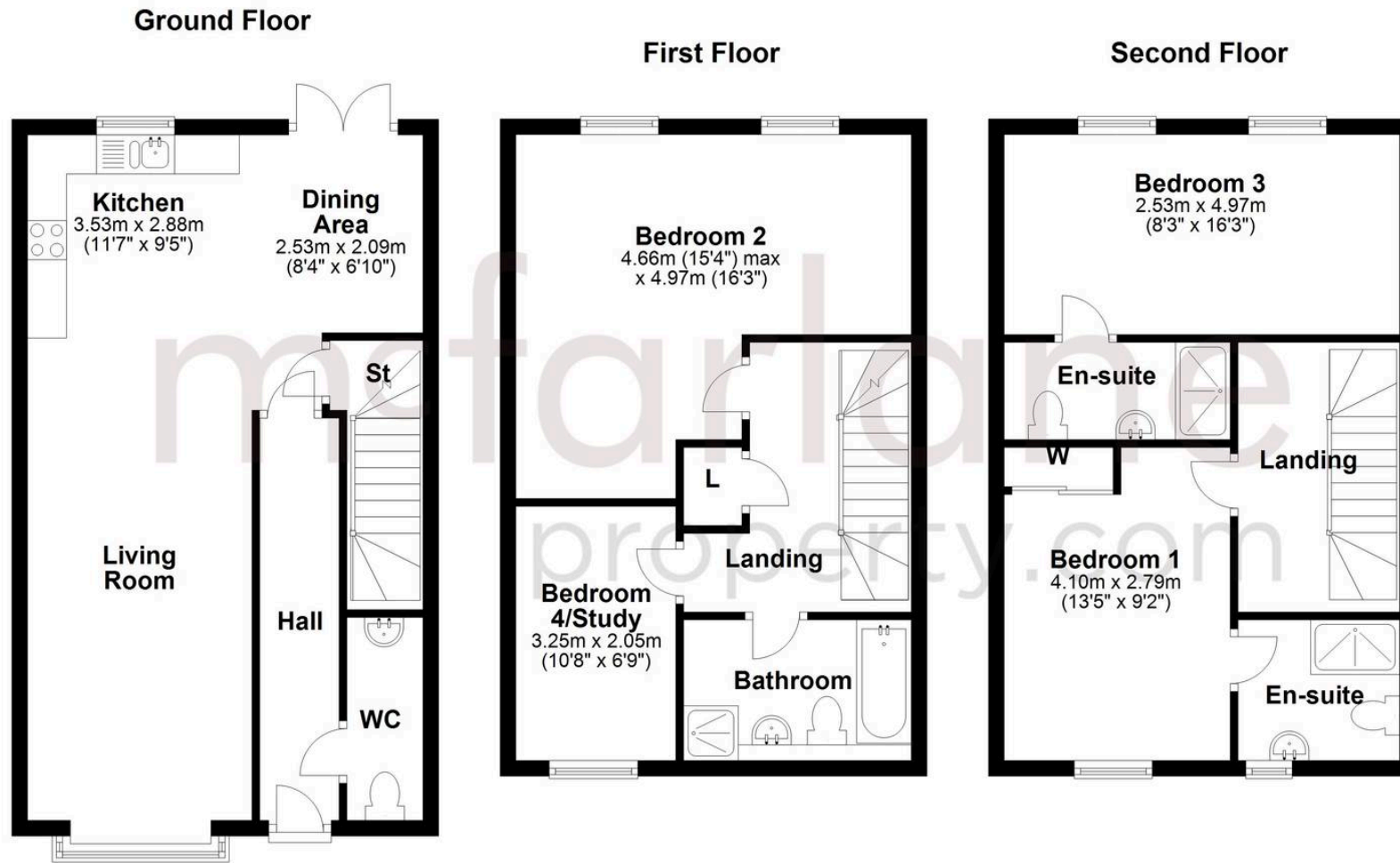
Bedroom 1 En-suite

Bedroom 3

16' 3" x 9' 1" (4.96m x 2.78m)

Bedroom 3 En-suite





McFarlane Sales & Lettings

Cricklade Sales, 36 High Street, Cricklade - SN6 6AY

01793 751044 • cricklade@mcfarlaneproperty.com • www.mcfarlaneproperty.com/