



Park Place, Ashton Keynes – SN6 6NT
Swindon

Guide Price **£525,000**

mcfarlane
property.com

Park Place

Ashton Keynes, Swindon

- Stunning Period Stone Built Cottage
- Believed to be one of Ashton Keynes Oldest Properties*
- Potential Revenue from Air Bed + Breakfast Est £20,000 PA (details on request)
- Period Charm + Features
- Central Village Position with Parking +
- Mature Front +Rear Gardens
- Living Room Room with Inglenook Fireplace
- Modern Fitted Kitchen + Utility
- Dining Room / Garden Room

Rare opportunity to purchase stunning 2-bed period cottage in sought-after Ashton Keynes village. B&B income potential, mature gardens + parking. Freehold, Contact McFarlane Cricklade for viewings.



Park Place

Ashton Keynes, Swindon

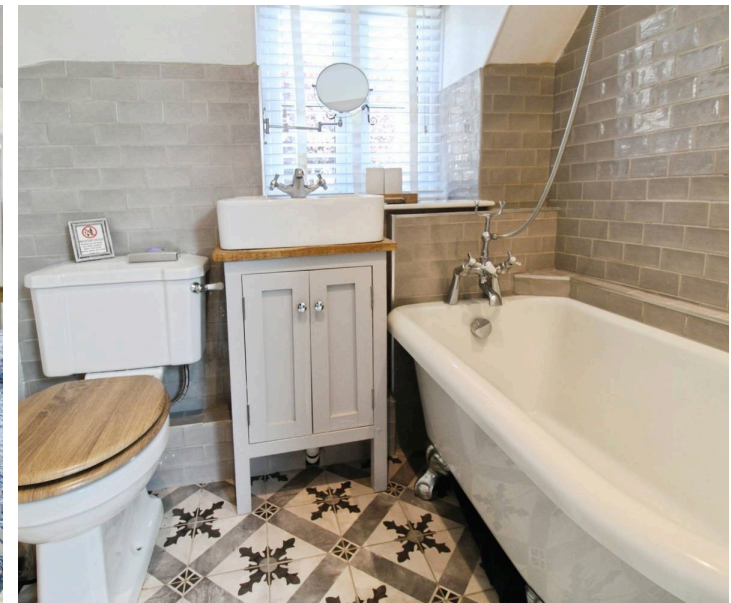
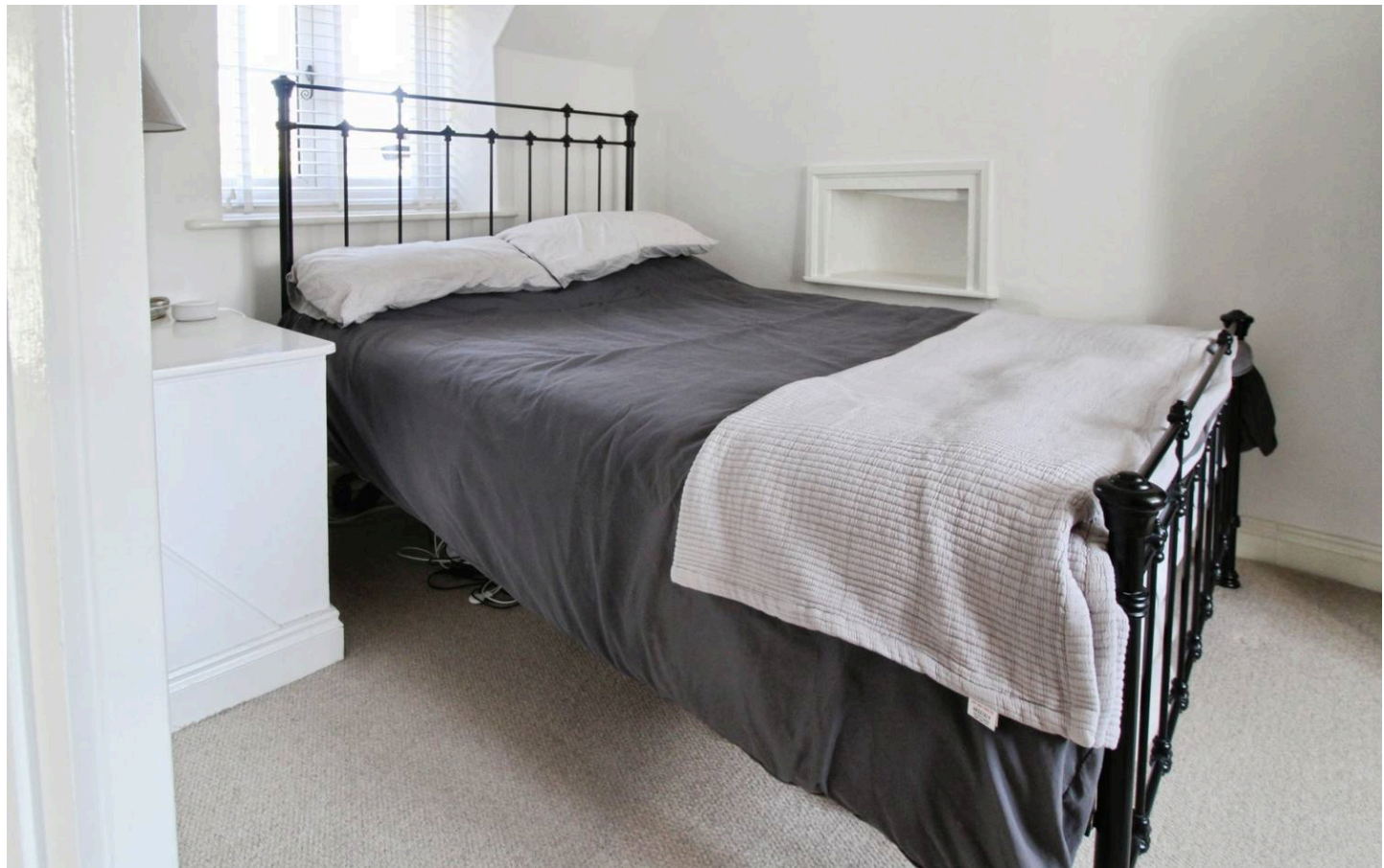
Ashton Keynes is a picturesque village in the county of Wiltshire which borders with Gloucestershire. The village is about 5 miles (8 km) south of Cirencester and 3.5 miles (5.6 km) west of Cricklade. Positioned within the Cotswold Water Park, this is a much coveted residential location with a vibrant village community and renowned primary school.

Council Tax band: D

Tenure: Freehold

EPC Energy Efficiency Rating: F

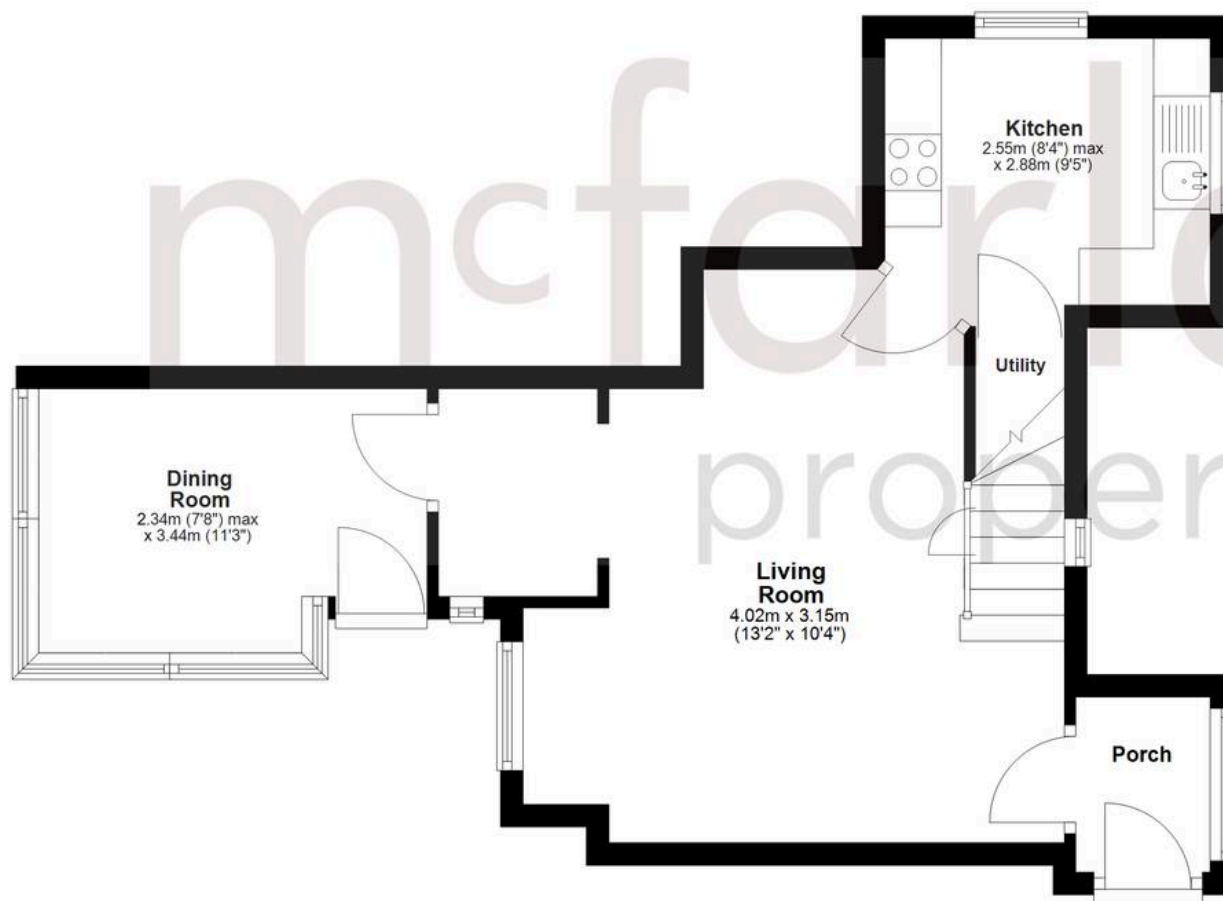
EPC Environmental Impact Rating: F



mcfarlane
property.com

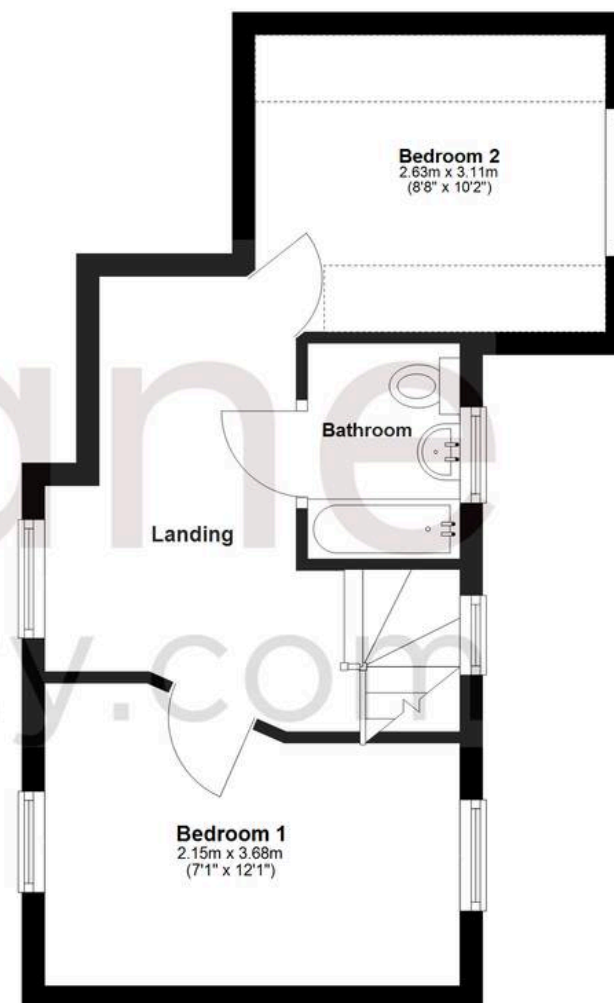
Ground Floor

Approx. 37.7 sq. metres (406.3 sq. feet)



First Floor

Approx. 29.5 sq. metres (317.4 sq. feet)



Total area: approx. 67.2 sq. metres (723.7 sq. feet)

Agents Note: Whilst every care has been taken to prepare these sales particulars, they are for guidance purposes only. All measurements are approximate and for general guidance purposes only and whilst every care has been taken to ensure their accuracy, they should not be relied upon and potential buyers are advised to recheck the measurements.