



Parsonage Farm Close, Cricklade – SN6 6LX
Swindon

Guide Price **£175,000**
mcfarlane
property.com

Parsonage Farm Close

Cricklade, Swindon

- First Floor Apartment
- Two Double Bedrooms
- Ideal First Purchase or Investment
- Ideally Positioned for the High Street + Amenities
- Kitchen Dining Room + Separate Living Room
- Potential Yield of 6% +

Ideal 2 bed 1st floor apartment in Cricklade – great for 1st purchase or investment with 6%+ yield. Recently redecorated, uPVC double glazing, gas heating. No chain. Call McFarlane Cricklade to View.



Parsonage Farm Close

Cricklade, Swindon

Council Tax band: TBD

EPC Energy Efficiency Rating: C

EPC Environmental Impact Rating: C



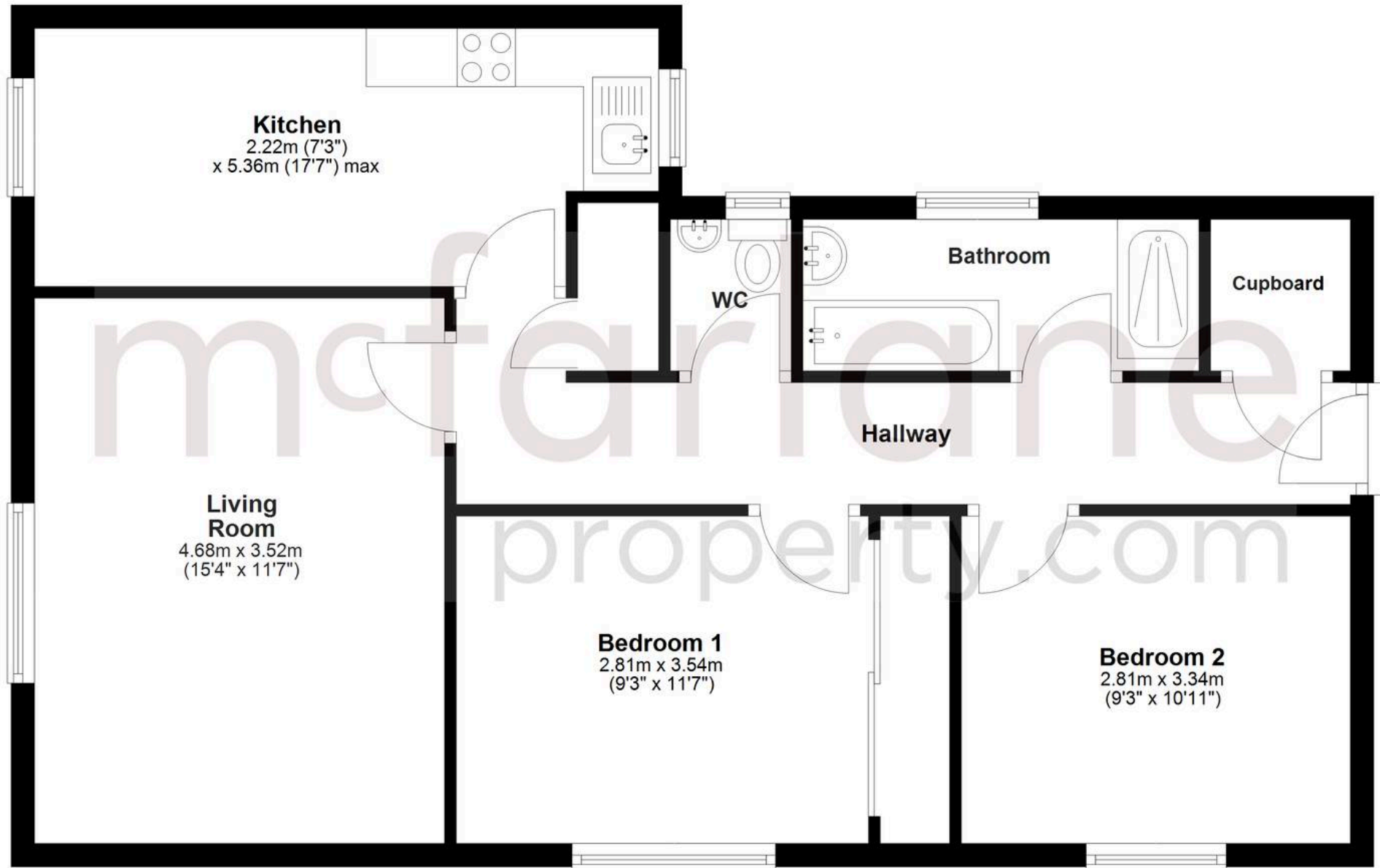
mcfarlane
property.com



Ground Floor

Approx. 69.3 sq. metres (745.5 sq. feet)

Agents Note: Whilst every care has been taken to prepare these sales particulars, they are for guidance purposes only. All measurements are approximate are for general guidance purposes only and whilst every care has been taken to ensure their accuracy, they should not be relied upon and potential buyers are advised to recheck the measurements.



Total area: approx. 69.3 sq. metres (745.5 sq. feet)