



**Pittsfield, Cricklade – SN6 6AW**  
Swindon

Guide Price **£550,000**

**mcfarlane**  
property.com



# Pittsfield

## Cricklade, Swindon

- Extended and Modernised to a High Standard
- Light and Airy Living Space
- Sought After Cul-De-Sac Position
- Feature Kitchen / Breakfast Room (5.6M x 4.5M)
- FOUR Bedroom Family Home
- Enclosed South Facing Rear Gardens
- Three Car Driveway
- Three Zone Under Floor Heating – Ground Floor

A spacious family home in sought-after Cricklade location. 4 beds, 3 receptions, en-suite master bedroom, private garden, driveway, garage. Contact [McFarlane Property.com](https://McFarlaneProperty.com) now!





## Pittsfield

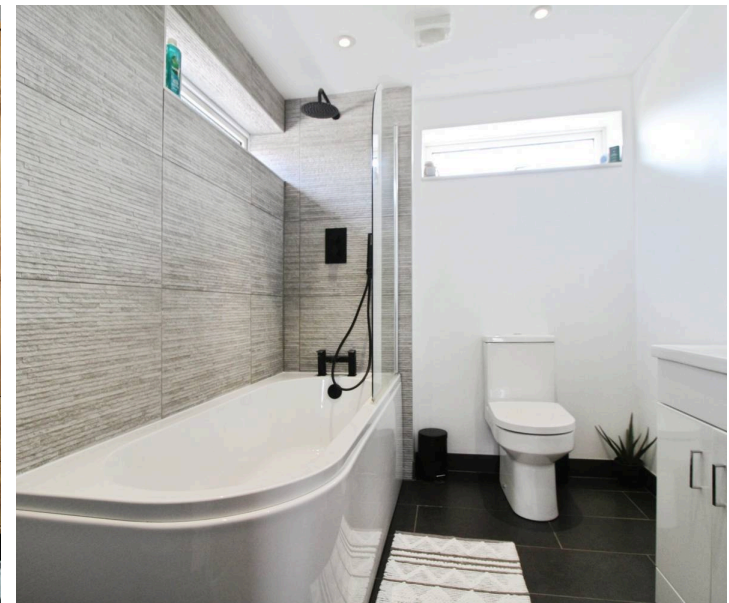
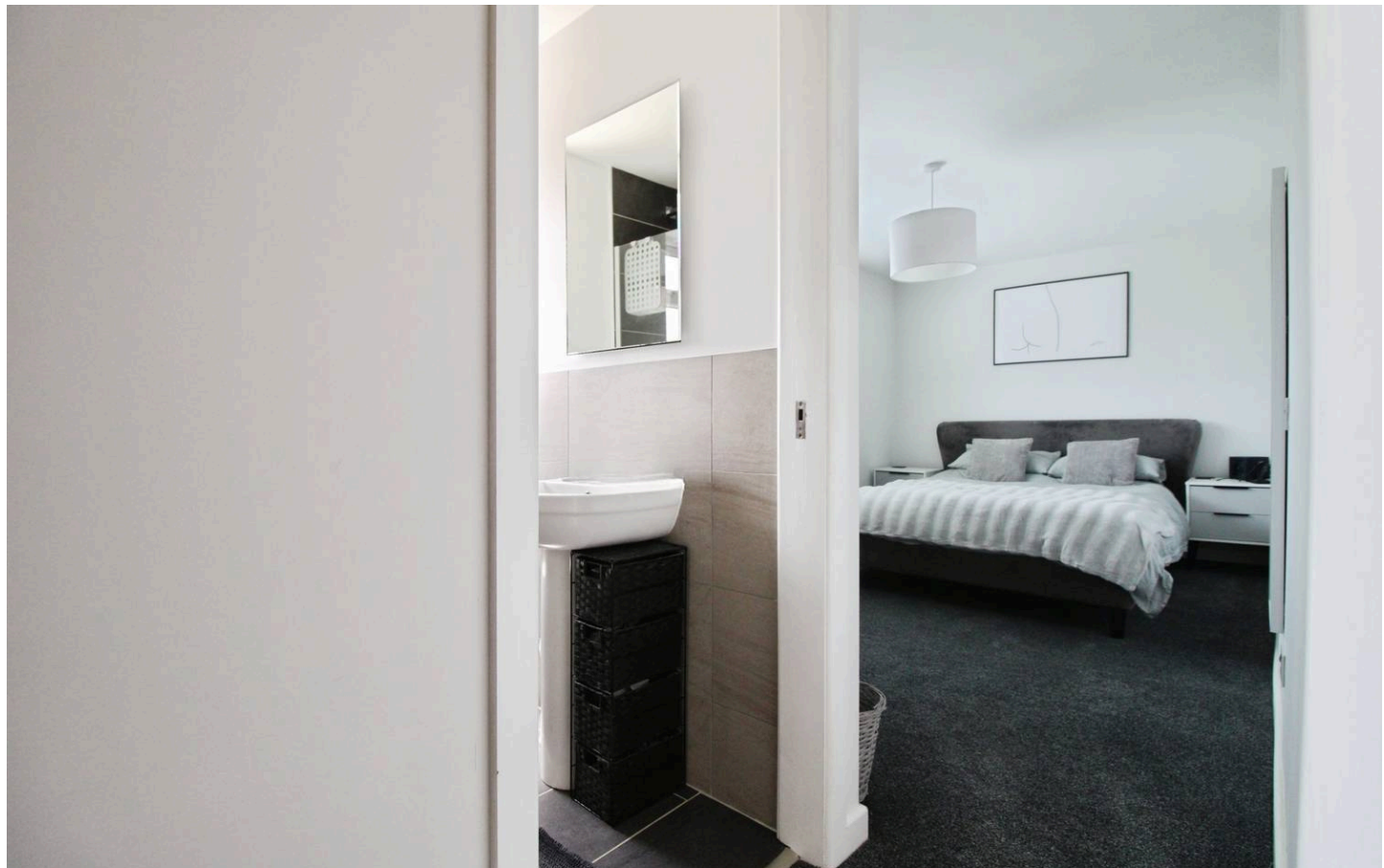
### Cricklade, Swindon

Cricklade is a former market town that lies between Cirencester and Swindon (A419) and is nestled within the Cotswold Water Parks. Cricklade has a bustling High Street with a plethora of amenities with a definitive focus on community. Just off the High Street lies the (SSSI & NNR) North Meadow with the snake headed fritillaries that bloom annually. Cricklade boasts a GP Surgery and Dispensing Chemist, Opticians and Dentist. There are also a number of Pubs and Eateries on offer. The refurbished Leisure Centre (with Pool) is also a local Gem with sporting groups and communities. Council Tax band: TBD

Tenure: Freehold

EPC Energy Efficiency Rating: D

EPC Environmental Impact Rating: D

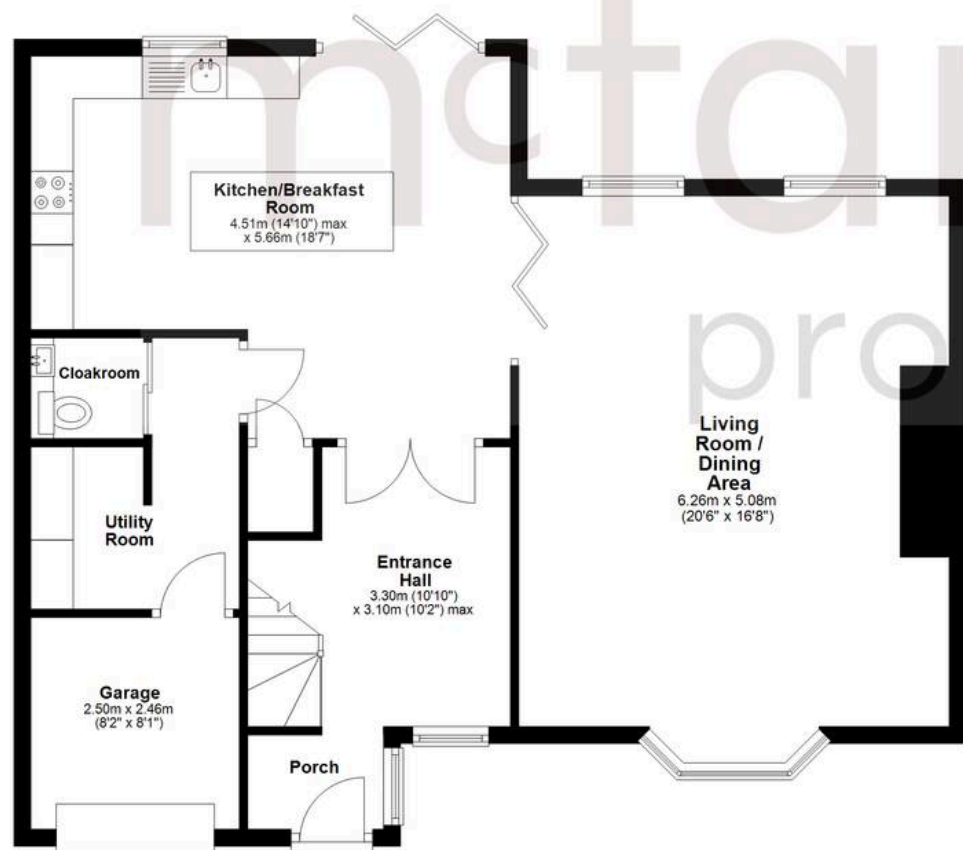
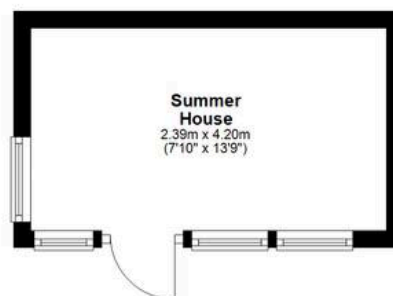


mcfarlane  
property.com

Agents Note: Whilst every care has been taken to prepare these sales particulars, they are for guidance purposes only. All measurements are approximate are for general guidance purposes only and whilst every care has been taken to ensure their accuracy, they should not be relied upon and potential buyers are advised to recheck the measurements.

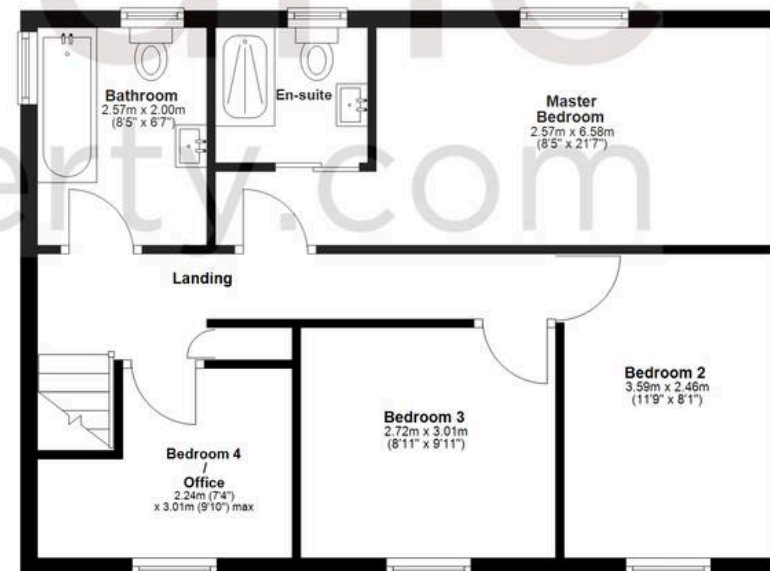
## Ground Floor

Approx. 82.5 sq. metres (888.1 sq. feet)



## First Floor

Approx. 54.3 sq. metres (584.7 sq. feet)



Total area: approx. 136.8 sq. metres (1472.8 sq. feet)