



Limes Place, Latton – SN6 6DR
Swindon

Guide Price **£125,000**
mcfarlane
property.com

Limes Place

Latton, Swindon

- NO ONWARD CHAIN
- Sought After Village Location
- Separate Utility Area
- Kitchen / Breakfast Room
- Offered with VACANT possession
- Ideal For First Time Buyers or Investment
- Prime Location For Surrounding Areas with ease of access to A419 and M4

A Well Presented 1 Bedroom Ground Floor Flat in the Sought After Village of Latton. This Ground Floor Flat comprises of; Living Room, Kitchen/Breakfast Room, Bedroom, Shower Room and Utility Area. To the Rear there is a Decking Area and a Communal Garden. Please Call Sole Selling Agents McFarlane Sales & Lettings to book your appointment 01793 751 044.



Limes Place

Latton, Swindon

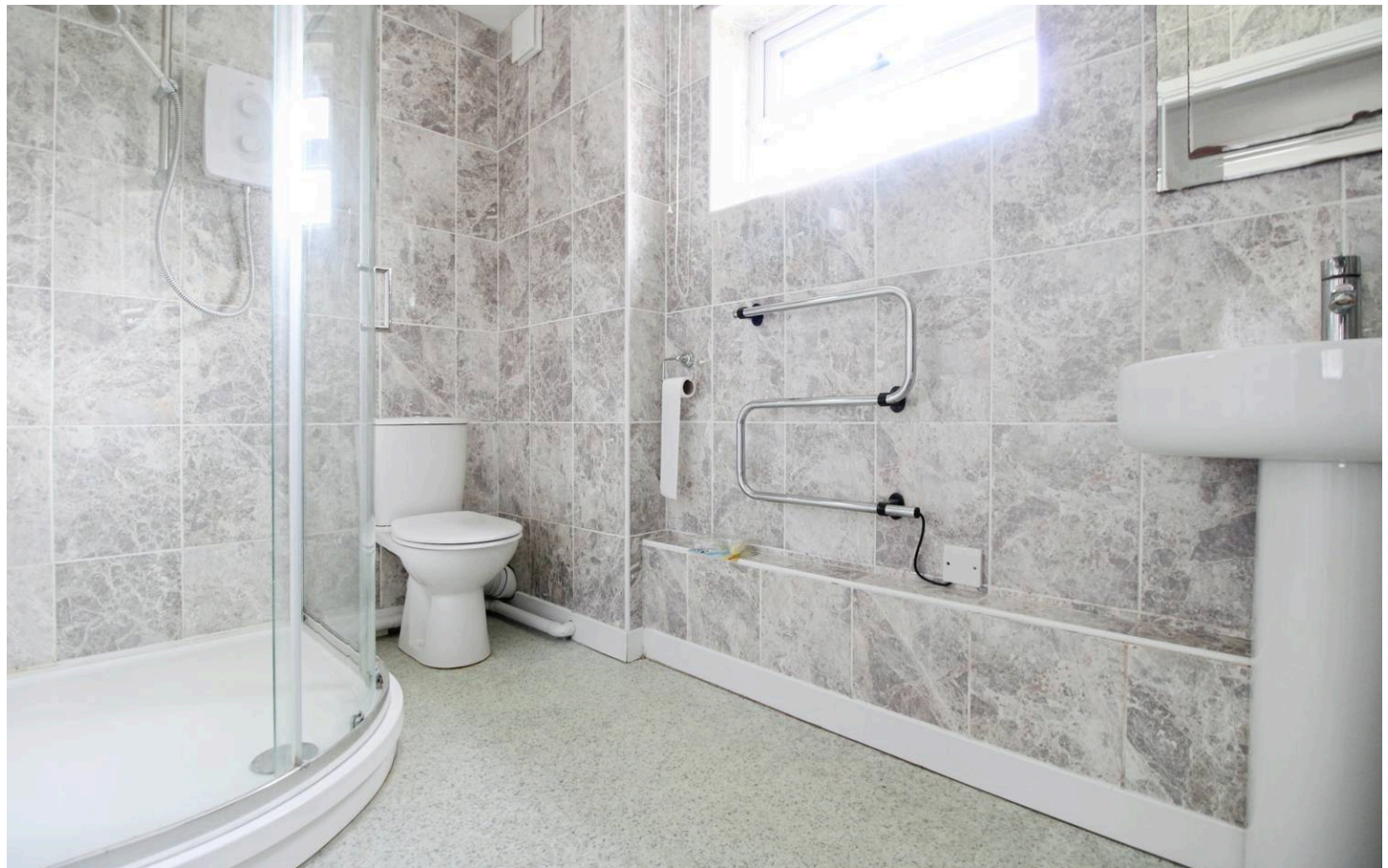
Latton is a smaller village and civil parish in Wiltshire and some 1.5 miles (2.4 km) north of Cricklade, and with proximity of neighbouring Gloucestershire. The village is bypassed by the A419 with ease of access to the larger towns of Cirencester and Swindon.

Council Tax band: A

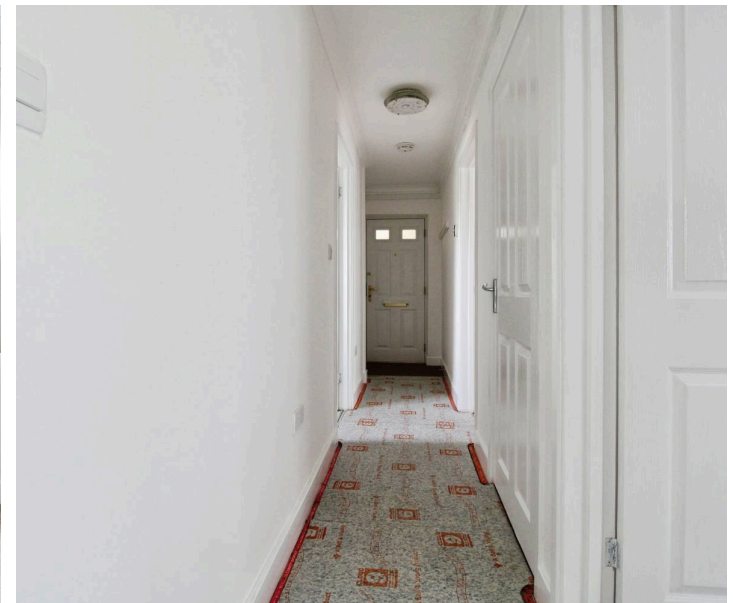
Tenure: Leasehold

EPC Energy Efficiency Rating: C

EPC Environmental Impact Rating: C



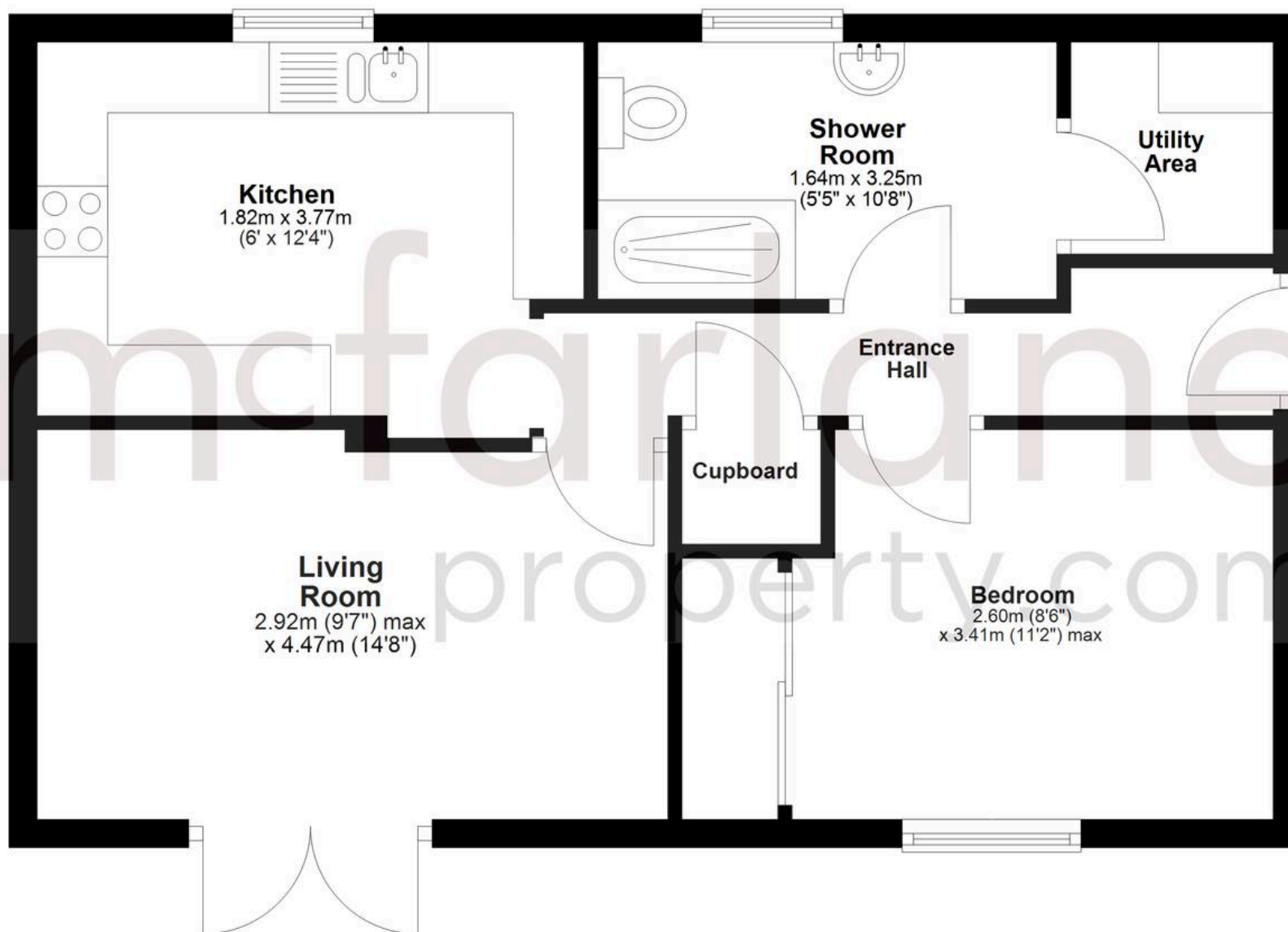
mcfarlane
property.com



Agents Note: Whilst every care has been taken to prepare these sales particulars, they are for guidance purposes only. All measurements are approximate are for general guidance purposes only and whilst every care has been taken to ensure their accuracy, they should not be relied upon and potential buyers are advised to recheck the measurements.

Ground Floor

Approx. 46.9 sq. metres (505.2 sq. feet)



Total area: approx. 46.9 sq. metres (505.2 sq. feet)