



High Street, Purton – SN5 4AB
Swindon

In Excess of **£375,000**
mcfarlane
property.com

High Street

Purton, Swindon

- Delightful Period Property with Retail Premises
- Feature Red Brick Three Bedroom Townhouse
- Altered and Improved Family Home
- Period Charm and Features
- Signature Kitchen Breakfast with Enclosed Private Courtyard
- Retail Opportunity (Call for Details)
- Sought After Village Location

Rare opportunity to purchase former merchants building with three bed period house in Purton market place. Retail/bike shop potential, with stunning features, courtyard garden, and stone storage shed.



High Street

Purton, Swindon

Purton is a larger village in Wiltshire located about 4 miles from the centre of Swindon. The capital of the Cotswold's Cirencester lies approximately 12.5 miles to the north with both market towns offering considerable amenities and shopping opportunities. Purton boasts a spirited community with schooling and sports and social clubs.

Council Tax band: C

Tenure: Freehold

EPC Energy Efficiency Rating: D

EPC Environmental Impact Rating: D

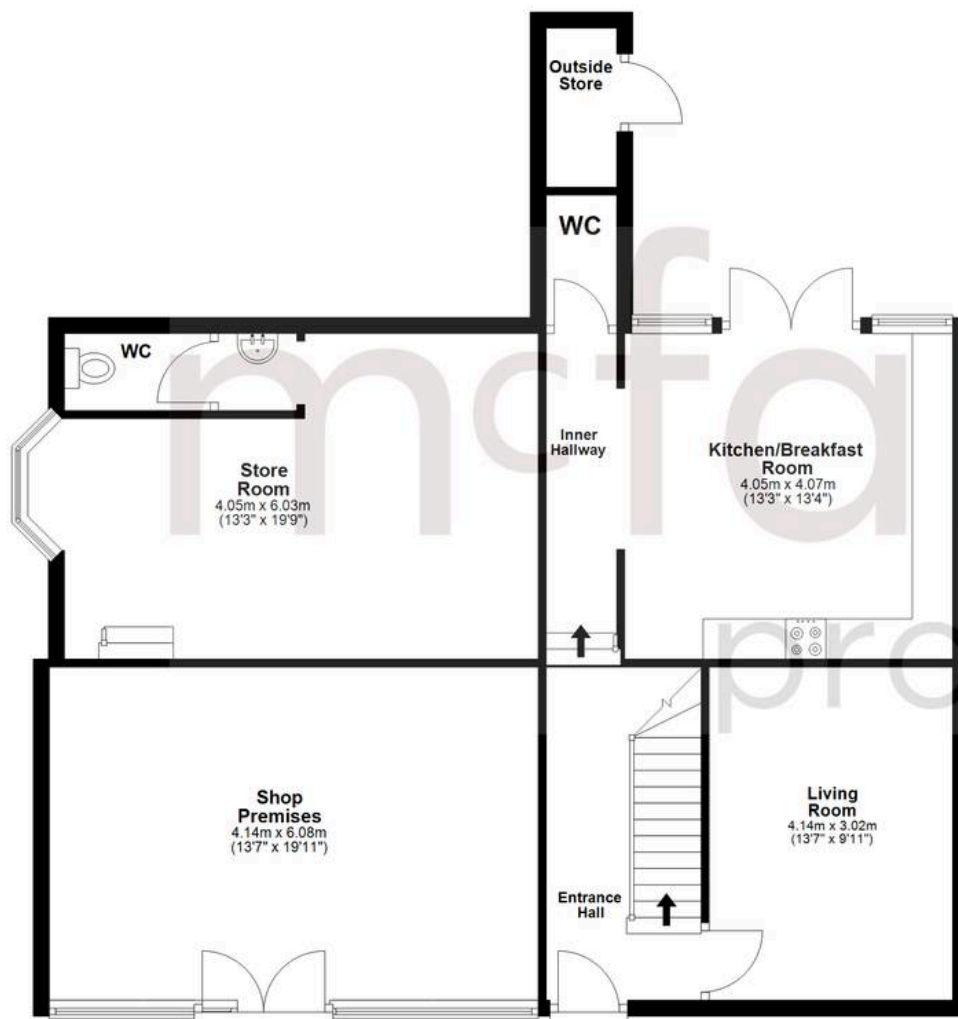


mcfarlane
property.com

Agents Note: Whilst every care has been taken to prepare these sales particulars, they are for guidance purposes only. All measurements are approximate and are for general guidance purposes only and whilst every care has been taken to ensure their accuracy, they should not be relied upon and potential buyers are advised to recheck the measurements.

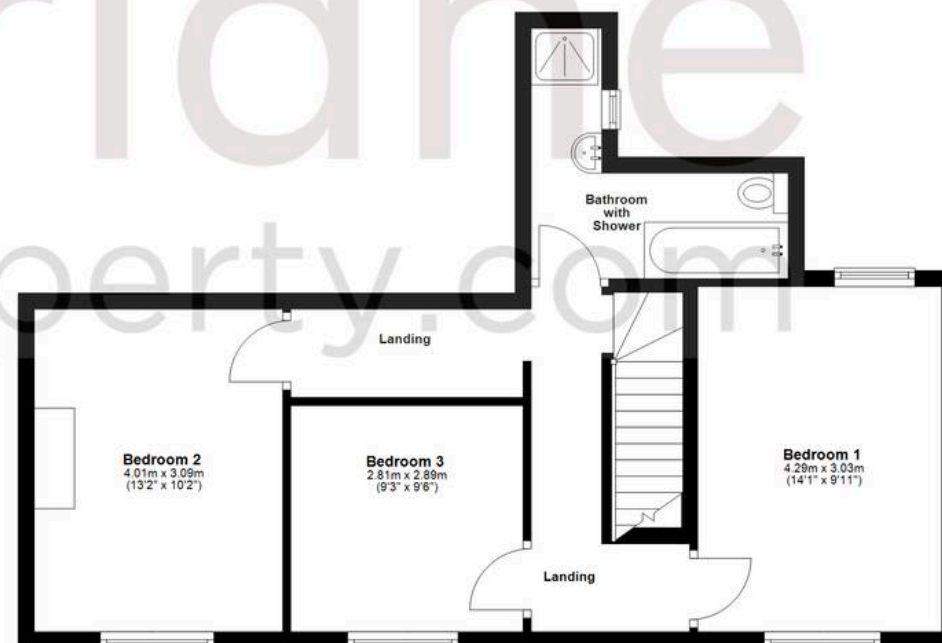
Ground Floor

Approx. 95.7 sq. metres (1029.7 sq. feet)



First Floor

Approx. 48.8 sq. metres (524.9 sq. feet)



Total area: approx. 144.4 sq. metres (1554.7 sq. feet)