



**Clover Cottage Purton Stoke – SN5 4JG**  
Wiltshire

Guide Price **£450,000**  
**mcfarlane**  
property.com

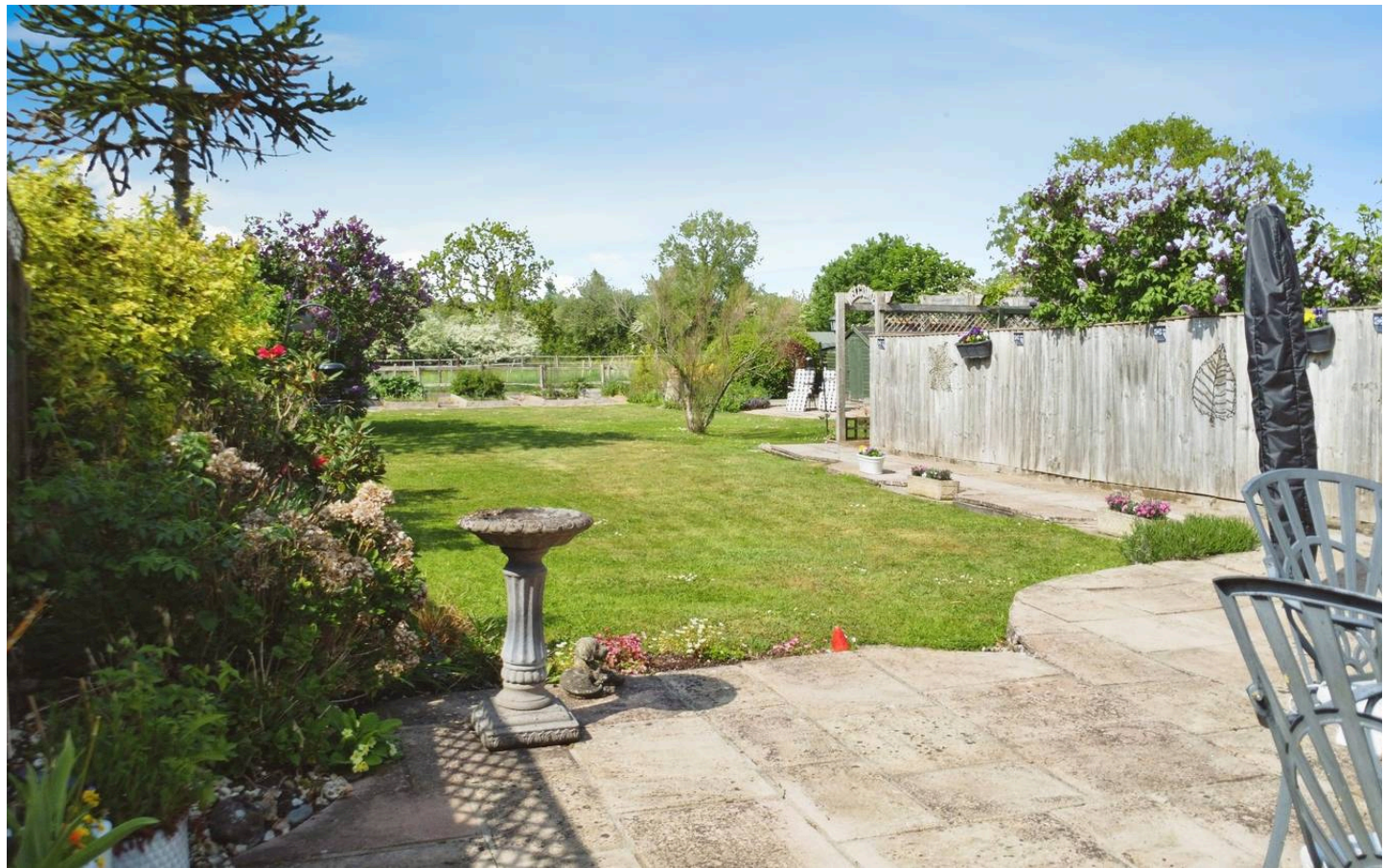


## 14 Purton Stoke

### Wiltshire

Charming period cottage in Purton Stoke village. Traditional features, mature Rear Garden, 3 beds + 2 baths, gas central heating, modern decor, stunning views. Call 01793 751 044.

- Beautiful Period Cottage
- Sought After Village Position
- Period Feature and Charm
- Stunning GENEROUS Rear Gardens
- Feature Living Room with Exposed Beams and Log Burner
- Fitted Kitchen





# Purton Stoke

Wiltshire

Purton Stoke is a delightful village situated between the former market town of Cricklade (2 miles to the North) and the larger village of Purton 2.4 Miles South).

Council Tax band: C

Tenure: Freehold



mcfarlane  
property.com

Agents Note: Whilst every care has been taken to prepare these sales particulars, they are for guidance purposes only. All measurements are approximate and for general guidance purposes only and whilst every care has been taken to ensure their accuracy, they should not be relied upon and potential buyers are advised to recheck the measurements.

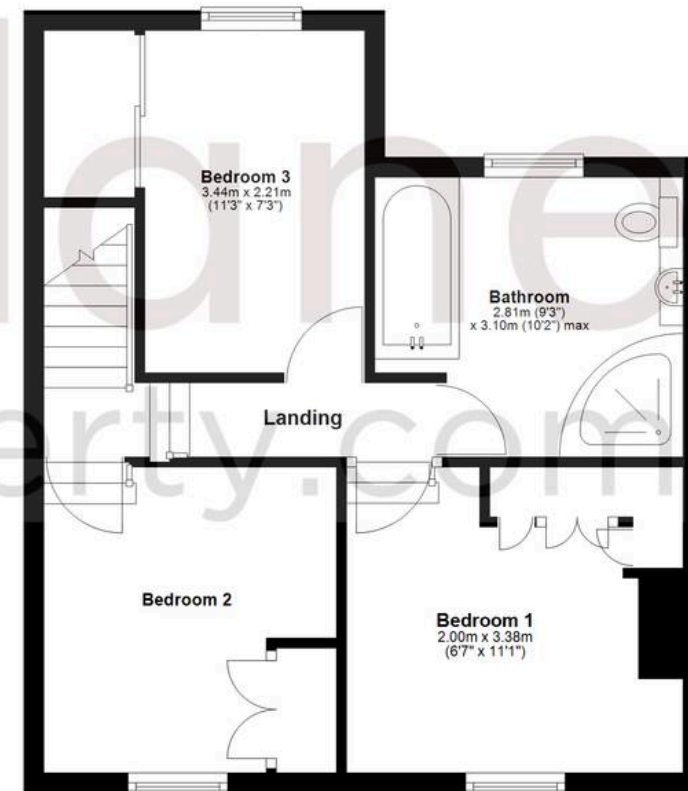
## Ground Floor

Approx. 63.2 sq. metres (680.3 sq. feet)



## First Floor

Approx. 43.3 sq. metres (465.5 sq. feet)



Total area: approx. 106.4 sq. metres (1145.8 sq. feet)