



Plot 7, Townsend Road
Shrivenham

£415,000



Plot 7, Townsend Road, Townsend Road

Shrivenham

Nestled in the highly desirable SHRIVENHAM location, this IMPRESSIVE and MODERN 3 Bedroom Detached House awaits its new owners. Situated in a small development of just 10 properties, this NEW HOME is READY TO MOVE INTO, offering a perfect blend of comfort and style. The property boasts a large FAMILY/KITCHEN/DINING ROOM, perfect for entertaining guests, complemented by a spacious LIVING ROOM with double doors leading to the kitchen. With three DOUBLE BEDROOMS, including an en-suite to BEDROOM 1, this property caters effortlessly to modern family living. As an added convenience, this home comes with TWO ALLOCATED PARKING SPACES.

Stepping outside, a breath of fresh air welcomes you to the rear garden of this EXECUTIVE HOME. The outdoor space offers the perfect retreat for relaxation or al-fresco dining, making it ideal for creating lasting memories with loved ones. With a thoughtfully designed layout and TWO ALLOCATED PARKING SPACES, convenience and comfort are seamlessly woven into the fabric of this property.

- NEW HOME READY TO MOVE INTO
- HIGHLY DESIRABLE SHRIVENHAM LOCATION
- SMALL DEVELOPMENT OF 10 PROPERTIES
- LARGE FAMILY / KITCHEN / DINING ROOM
- LARGE LIVING ROOM WITH DOUBLE DOORS TO KITCHEN
- DETACHED
- TWO ALLOCATED PARKING SPACES
- THREE DOUBLE BEDROOMS
- EN-SUITE TO BEDROOM 1
- 2 ALLOCATED PARKING SPACES



Hall

Living Room

11' 3" x 16' 4" (3.44m x 4.99m)

Kitchen/Dining Room

11' 9" x 24' 7" (3.58m x 7.49m)

WC

Landing

Bedroom 1

11' 9" x 13' 2" (3.57m x 4.02m)

En-Suite

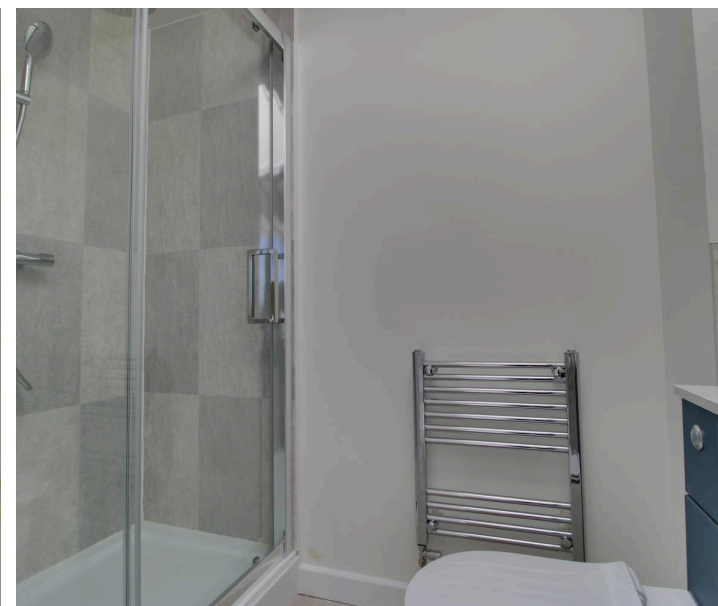
Bedroom 2

11' 4" x 13' 2" (3.45m x 4.02m)

Bedroom 3

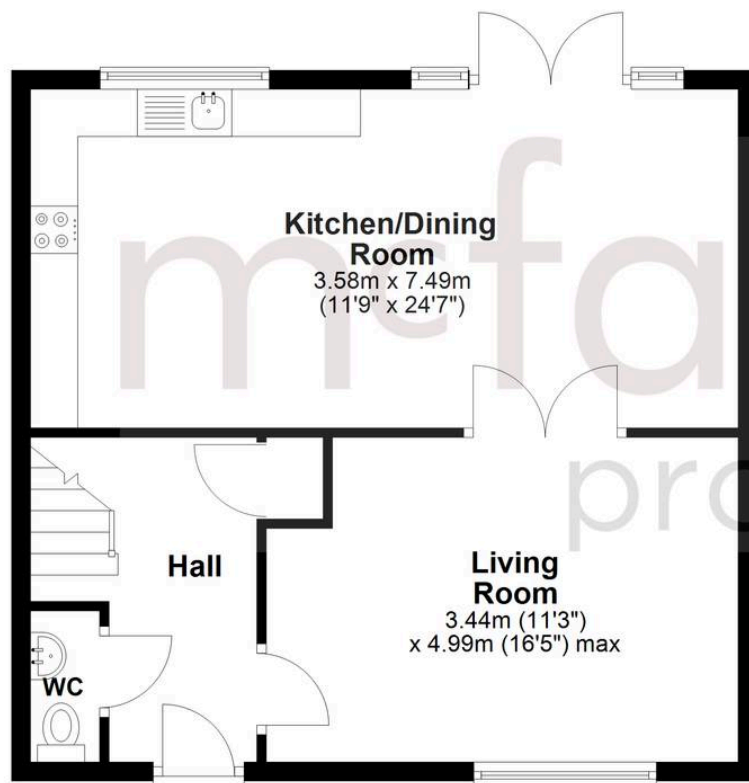
7' 10" x 11' 1" (2.40m x 3.37m)

Bathroom



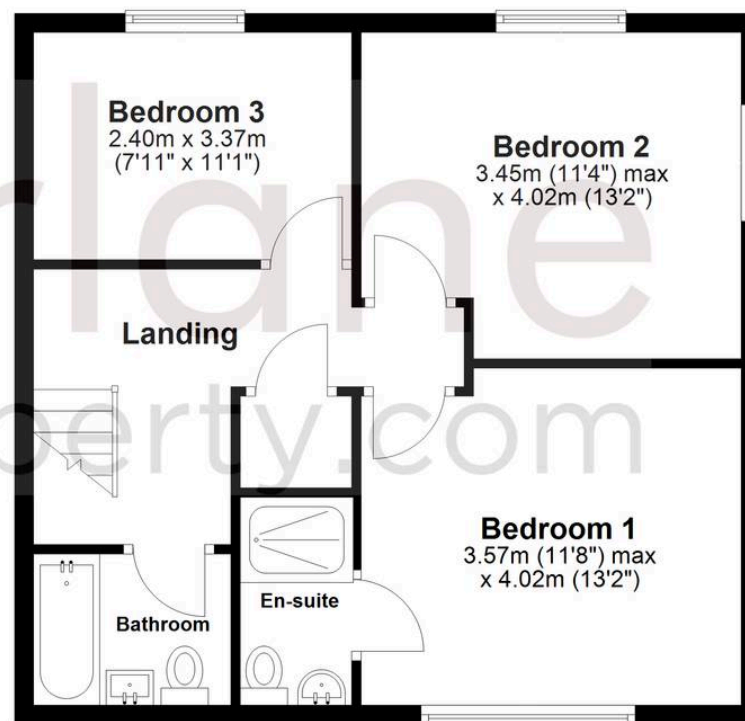
Ground Floor

Approx. 53.3 sq. metres (573.9 sq. feet)



First Floor

Approx. 52.9 sq. metres (569.9 sq. feet)



Total area: approx. 106.3 sq. metres (1143.8 sq. feet)

McFarlane Sales & Lettings

Cricklade Sales, 36 High Street, Cricklade - SN6 6AY

01793 751044 • cricklade@mcfarlaneproperty.com • www.mcfarlaneproperty.com/