



The Yew, Restrop Road, Purton
Swindon

£850,000



The Yew, Restrop Road

Purton, Swindon

****Discover the epitome of luxury living with this STUNNING 5-Bedroom Detached House, available MOVE CHAIN FREE WITH PART EXCHANGE. Boasting a remarkable NEW HOME status, this property presents a lifestyle of sophistication and comfort. The heart of the home lies in the expansive KITCHEN / BREAKFAST / FAMILY ROOM, ideal for both relaxation and entertainment. A Separate SITTING ROOM, DINING ROOM, and STUDY offer versatile spaces for various activities. Convenience is key with a UTILITY ROOM and WC on the ground floor. The DETACHED FIVE BEDROOM HOUSE features en-suites and built-in wardrobes in bedrooms one and two, ensuring a lavish retreat. The property further benefits from a DOUBLE GARAGE and 2 PARKING SPACES, providing ample space for vehicles and storage. Start anew in this remarkable property and seize the opportunity to make it your own with a generous £20,000 STAMP DUTY CONTRIBUTION.****

Tenure: Freehold - Service Charge : N/A - Council Tax : TBC - Management Fee : £404.82 p/a

- MOVE CHAIN FREE WITH PART EXCHANGE
- AVAILABLE WITH £20,000 STAMP DUTY CONTRIBUTION
- NEW HOME
- KITCHEN / BREAKFAST / FAMILY ROOM
- SEPARATE SITTING ROOM, DINING ROOM AND STUDY
- UTILITY AND WC
- DETACHED FIVE BEDROOM HOUSE
- EN-SUITE AND BUILT IN WARDROBES TO BEDROOM ONE AND TWO
- DOUBLE GARAGE AND 2 PARKING SPACES



Hall

Kitchen / Breakfast / Family

28' 7" x 15' 2" (8.71m x 4.62m)

Sitting Room

17' 11" x 13' 7" (5.45m x 4.13m)

Dining Room

17' 11" x 13' 6" (5.45m x 4.11m)

Study

10' 8" x 8' 2" (3.25m x 2.50m)

Utility

w/c

Landing

Bedroom 1

15' 4" x 12' 8" (4.68m x 3.86m)

En-suite

Bedroom 2

13' 4" x 10' 8" (4.06m x 3.26m)

En-suite

Bedroom 3

14' 3" x 9' 2" (4.34m x 2.80m)

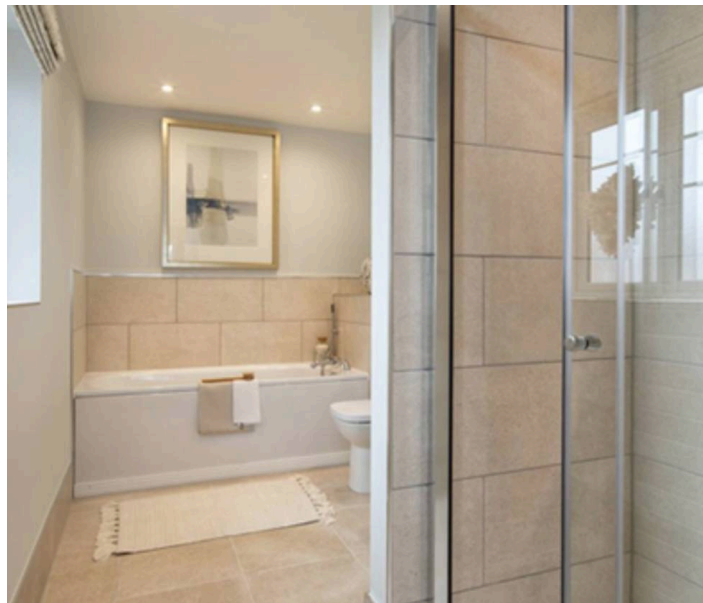
Bedroom 4

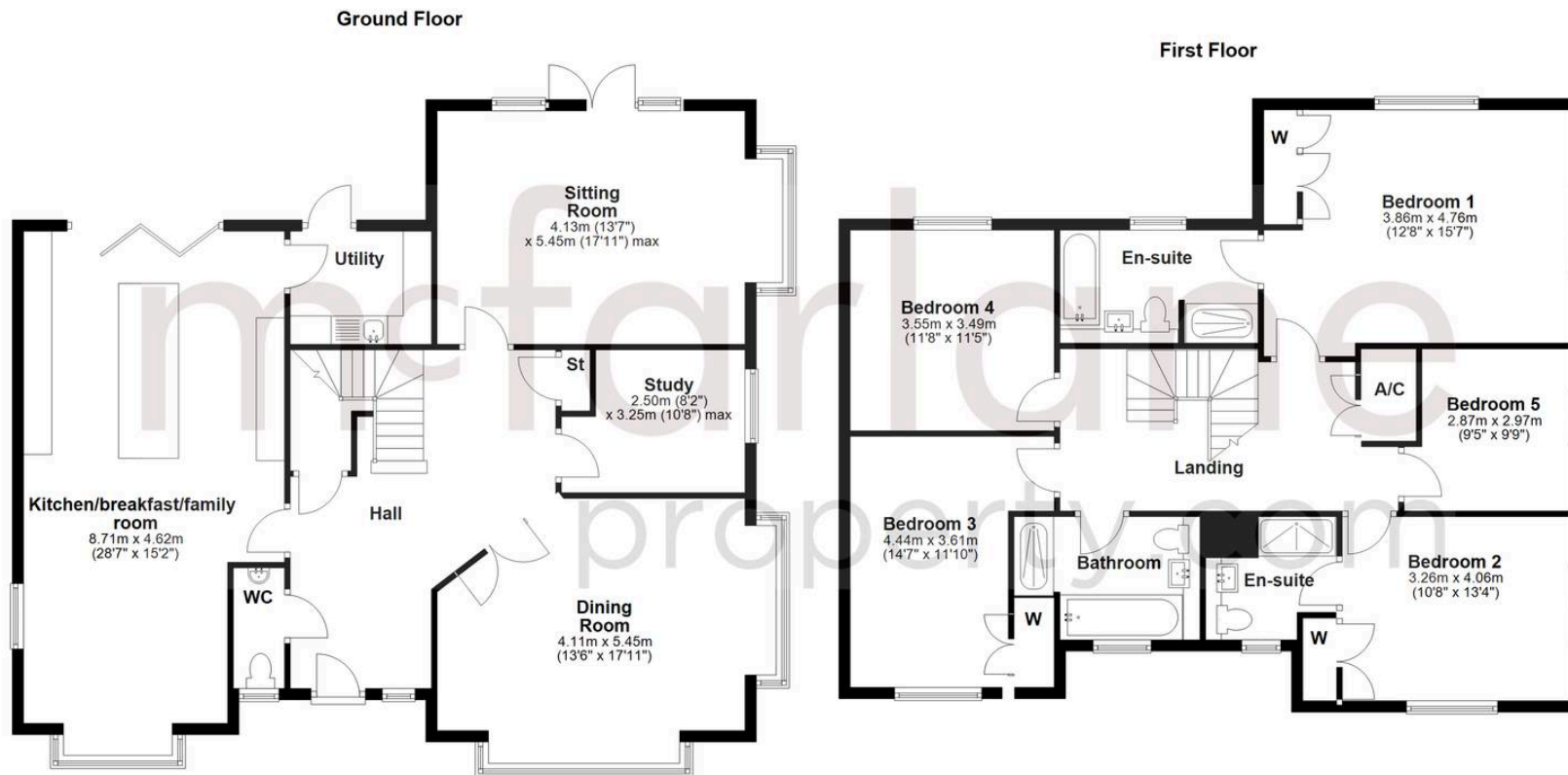
11' 8" x 11' 5" (3.55m x 3.49m)

Bedroom 5

9' 5" x 8' 8" (2.87m x 2.65m)

Bathroom





McFarlane Sales & Lettings

Cricklade Sales, 36 High Street, Cricklade - SN6 6AY

01793 751044 • cricklade@mcfarlaneproperty.com • www.mcfarlaneproperty.com/