



Evening Star, Royal Wootton Bassett – SN4 8FR

Wiltshire

Guide Price **£490,000**

mcfarlane
property.com

Evening Star

Royal Wootton Bassett, Swindon

- Stunning Detached Family Home
- Four DOUBLE Bedrooms
- Three Bathrooms (inc 2 Ensuites)
- Sought After WAIN HOMES Built Family Home
- Open Plan Kitchen Dining / Family Room
- Altered and Improved Home
- Separate Living Room with Box Bay
- Landscaped Rear Gardens (SOUTHERLY ASPECT)
- Garage & Driveway
- Built in 2018 (4 years NHBC remaining)

Stunning 4 bed detached house in Royal Wootton Bassett. Spacious rooms, 3 bathrooms, modern kitchen, and landscaped gardens with garage and parking. Contact McFarlane Cricklade for viewing. "



Evening Star

Royal Wootton Bassett, Swindon

Royal Wootton Bassett formerly Wootton Bassett, is a market town in North Wiltshire. The Town is well placed for Motorway networks with junction 16 of the M4 nearby, it also lies about 6 miles (10 km) to the west of Swindon and 10 miles (16 km) northeast of Calne. The Town has a vibrant High Street with a wide range of amenities and eateries.

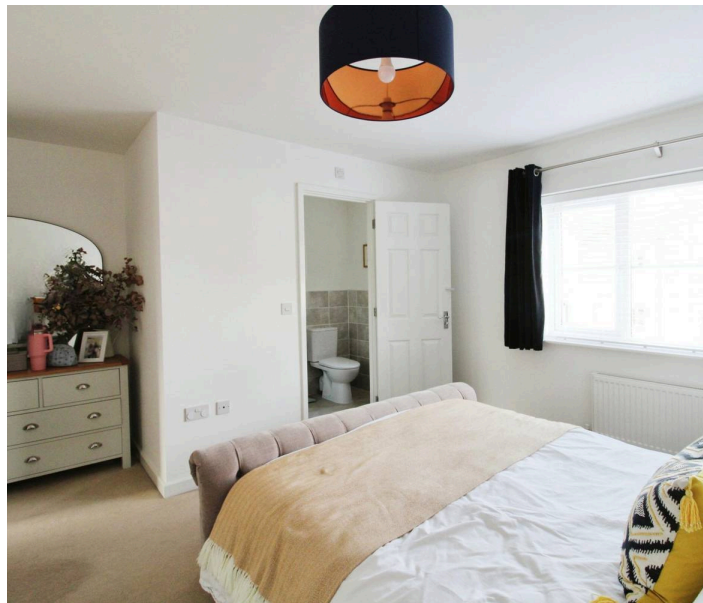
*****Stunning Southerly REAR GARDENS*****

Council Tax band: E

Tenure: Freehold

EPC Energy Efficiency Rating: B

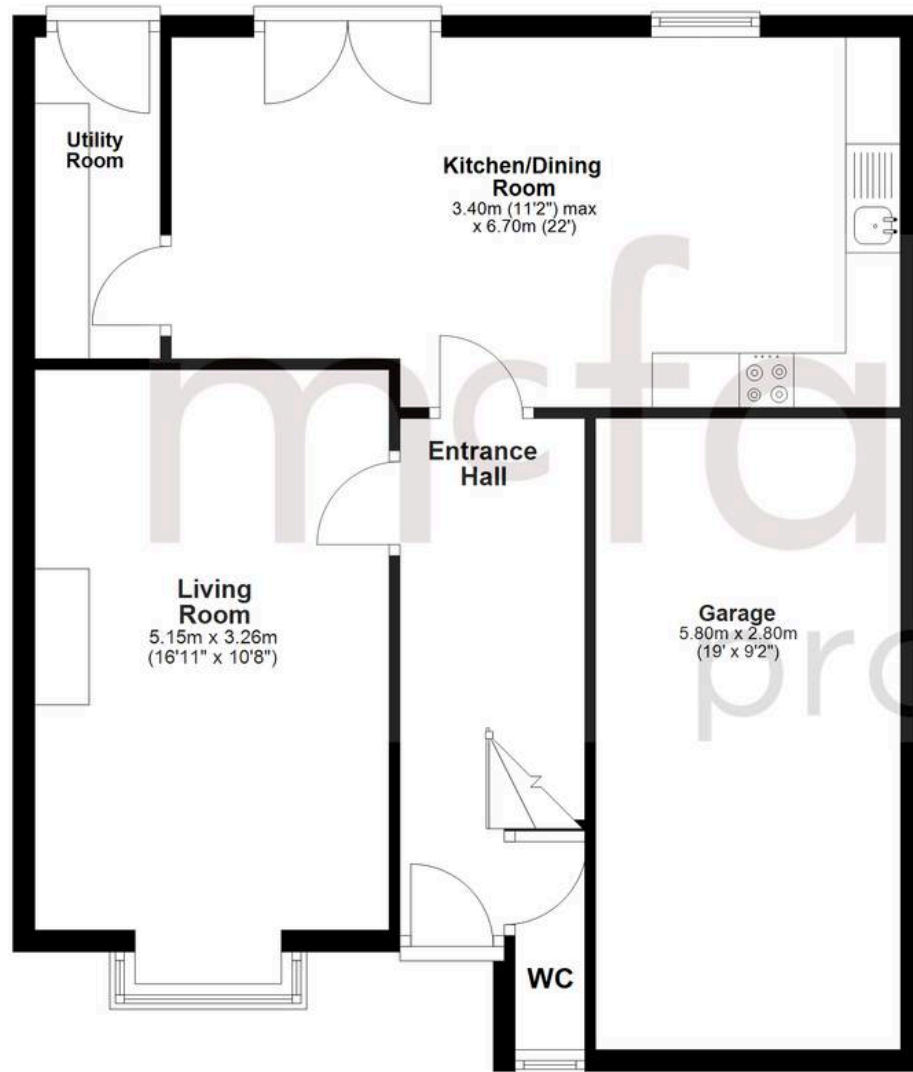
EPC Environmental Impact Rating: B



mcfarlane
property.com

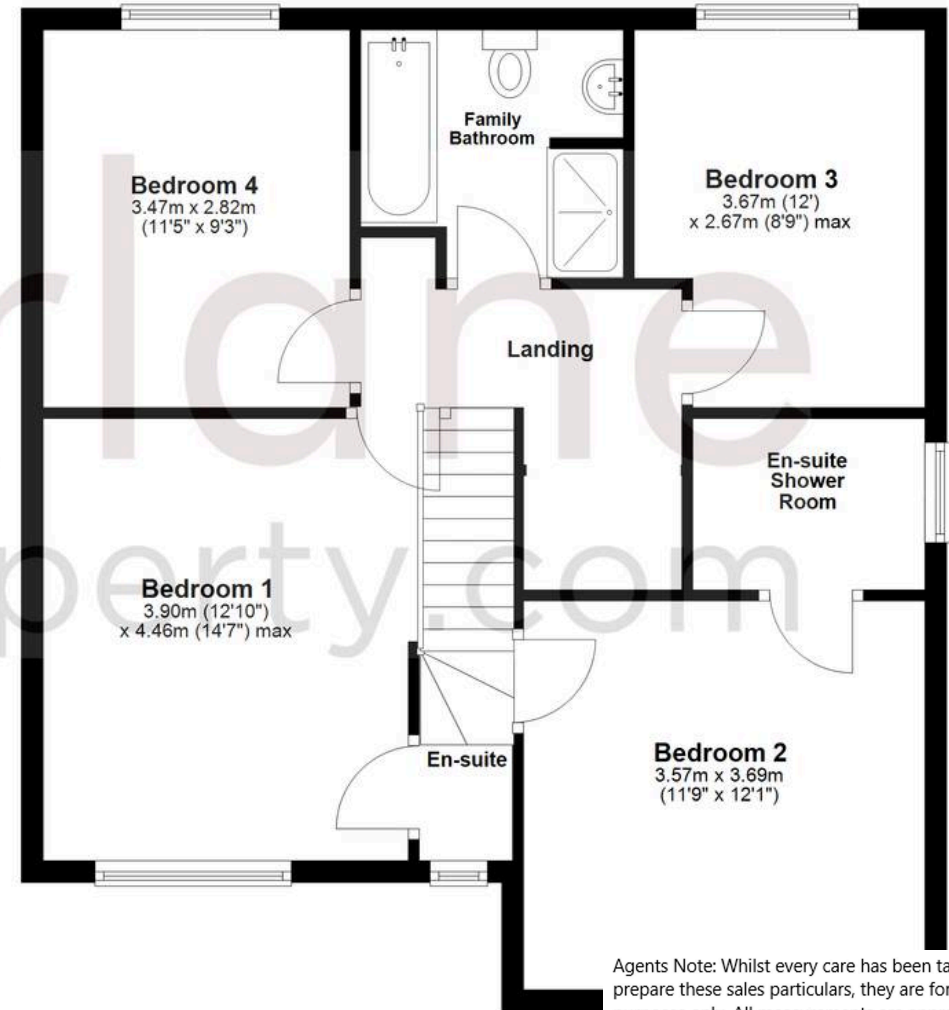
Ground Floor

Approx. 69.4 sq. metres (747.4 sq. feet)



First Floor

Approx. 65.1 sq. metres (700.9 sq. feet)



Total area: approx. 134.6 sq. metres (1448.3 sq. feet)

Agents Note: Whilst every care has been taken to prepare these sales particulars, they are for guidance purposes only. All measurements are approximate and for general guidance purposes only and whilst every care has been taken to ensure their accuracy, they should not be relied upon and potential buyers are advised to recheck the measurements.