



mcfarlane
property.com

New Road, Purton – SN5 4HF

Wiltshire

In Excess of **£300,000**

mcfarlane
property.com

New Road

Purton, Wiltshire

- Two DOUBLE Bedroom Red Brick Property
- Extensive Garden and Paddock Totaling (0.34 Acres).
- Opportunity to Extend and Alter (subject to planning)
- Updating and Modernisation Required
- Expansive Garage / Workshop
- Paddock Area (bottom of plot).

Opportunity to purchase a Red Brick Two DOUBLE Bedroom End of Terrace home in Purton. Requires UPDATING but offers potential. Extensive Gardens, Garage/Workshop and Paddock. Accommodation includes Living Room, Dining Room, Kitchen, and Two Double Bedrooms. Viewings 01793 751 044.



New Road

Purton, Wiltshire

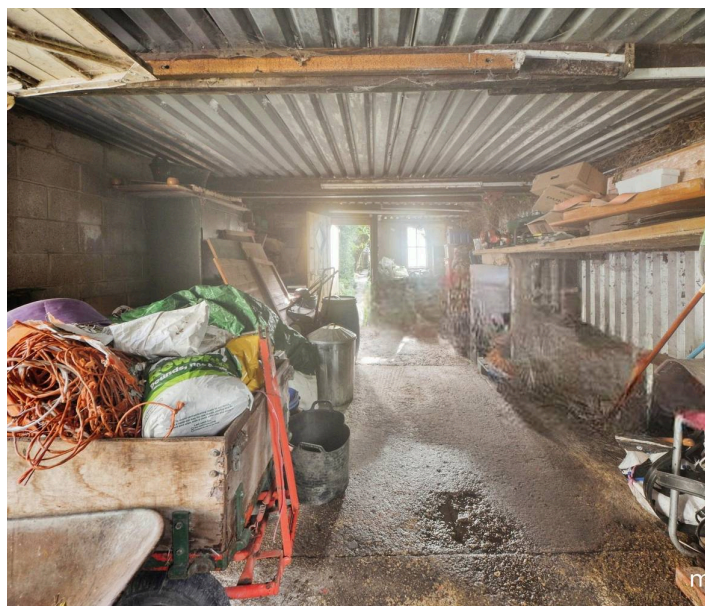
Positioned in New Road Purton. Ideally placed for the towns amenities and local transport links. The larger towns of Swindon lie some 7.2 Miles South East and Royal Wootton Bassett 4.8 Miles South West.

Council Tax band: C

Tenure: Freehold

EPC Energy Efficiency Rating: E

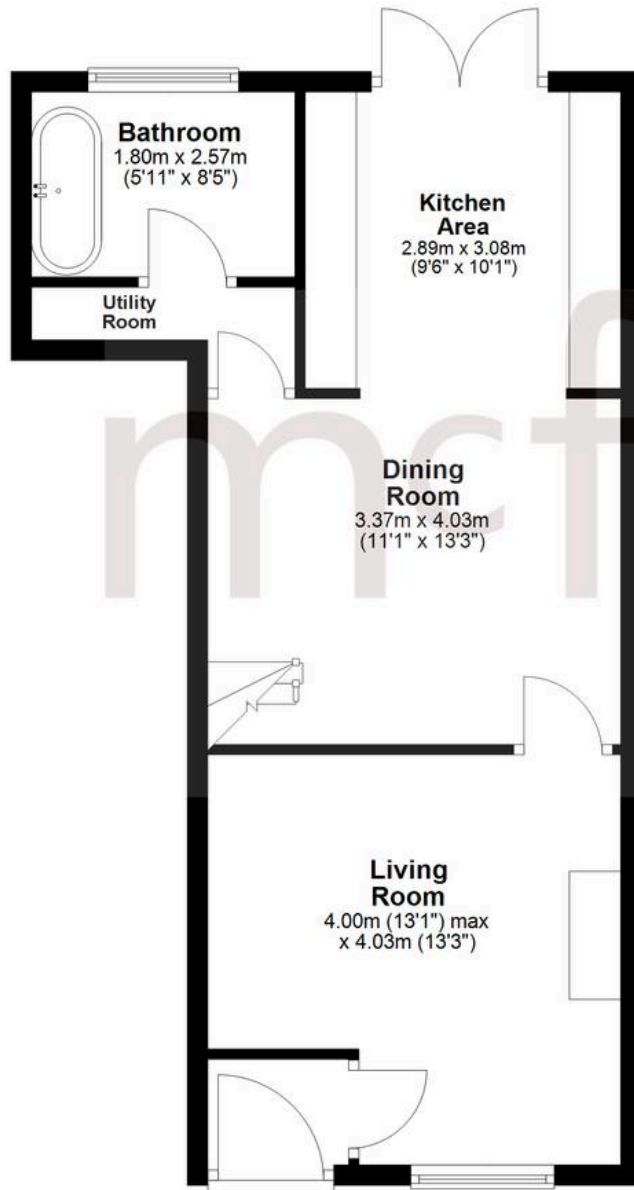
EPC Environmental Impact Rating: E



mcfarlane
property.com

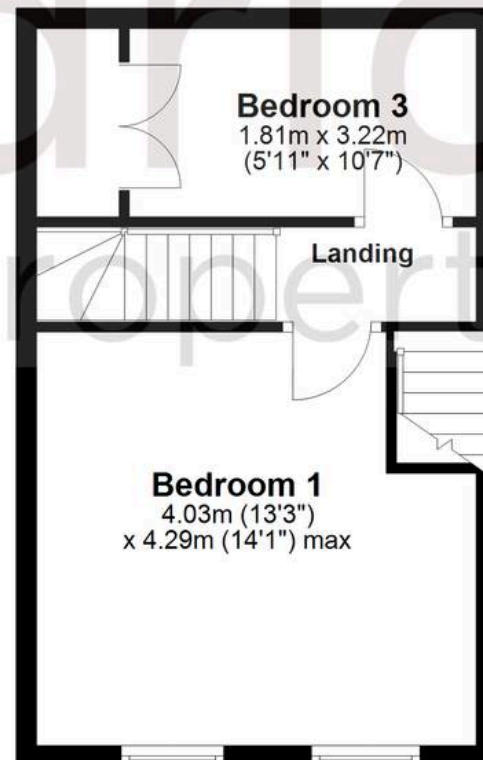
Ground Floor

Approx. 46.3 sq. metres (498.4 sq. feet)



First Floor

Approx. 31.3 sq. metres (336.7 sq. feet)



Second Floor

Approx. 16.3 sq. metres (175.7 sq. feet)



Agents Note: Whilst every care has been taken to prepare these sales particulars, they are for guidance purposes only. All measurements are approximate and for general guidance purposes only and whilst every care has been taken to ensure their accuracy, they should not be relied upon and potential buyers are advised to recheck the measurements.

Total area: approx. 93.9 sq. metres (1010.7 sq. feet)