



The Moors, Lydiard Millicent – SN5 3LE

Wiltshire

In Excess of **£310,000**

mcfarlane
property.com

The Moors

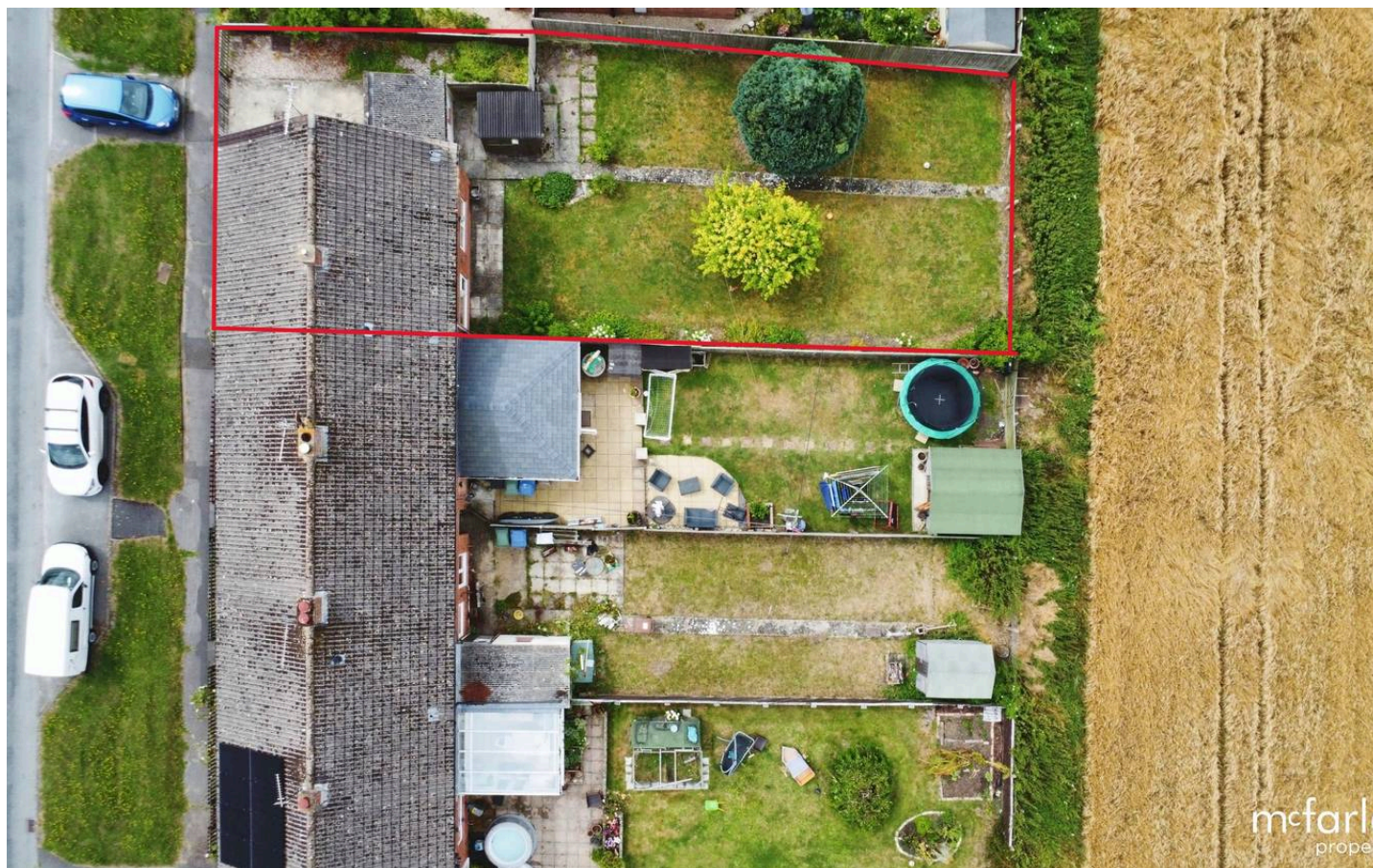
Lydiard Millicent, near Purton Wiltshire

Spacious 3-bed End of Terrace with countryside views. Entrance Hallway, Living Room, Dining Room, Kitchen, Store Room. Potential for extension and improvement. Requires modernisation. Contact McFarlane Cricklade for viewing. Close to Purton and West Swindon amenities.

- Semi Rural Position Overlooking Countryside
- Sought After Plot with Potential
- Updating Required
- Mature Rear Gardens
- Off Road Parking + Side Gardens
- NO CHAIN

Call to View: 01793 751 044

NO CHAIN



The Moors

Lydiard Millicent, near Purton Wiltshire

The Village of Lydiard Millicent is a picturesque rural setting with ease of access to neighbouring West Swindon, Purton Cricklade and Royal Wootton Bassett. Transport links are available locally with junction 16 of the M4 (3.5 Miles South) Also mainline Rail services are available via Swindon Central (5 Miles East).

Council Tax band: C

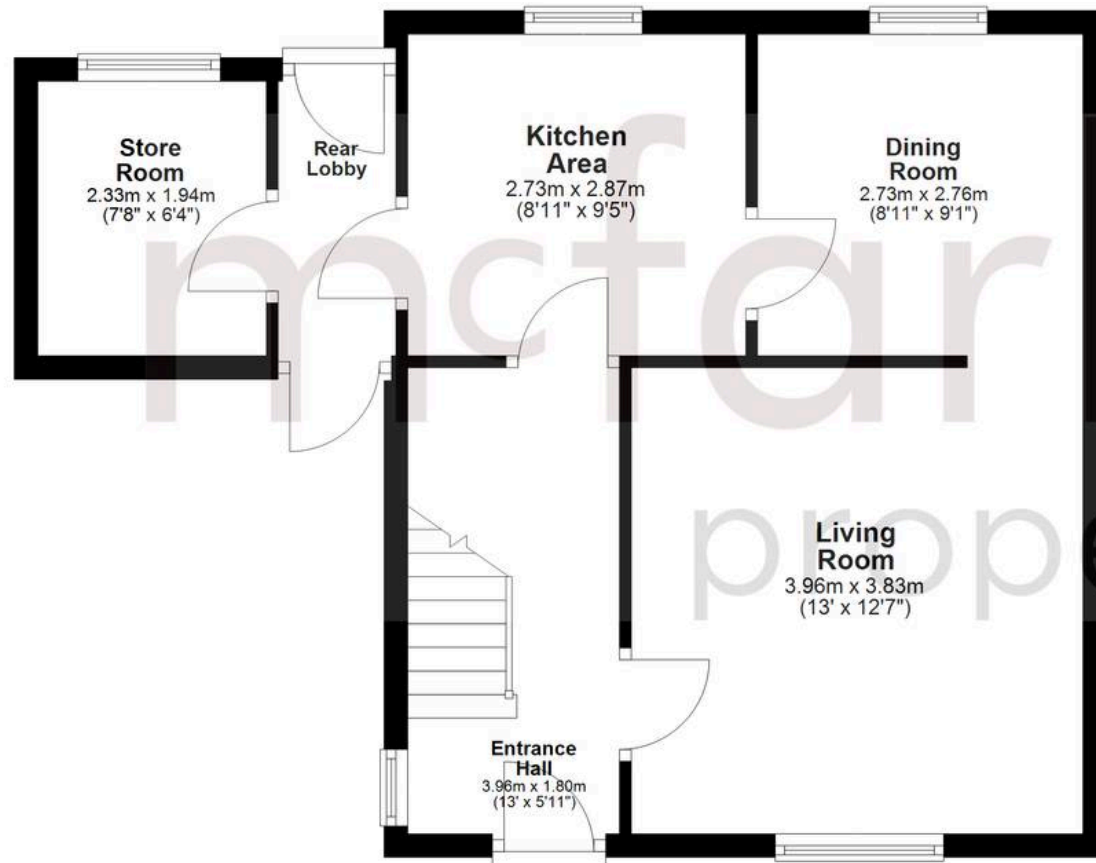
Tenure: Freehold



mcfarlane
property.com

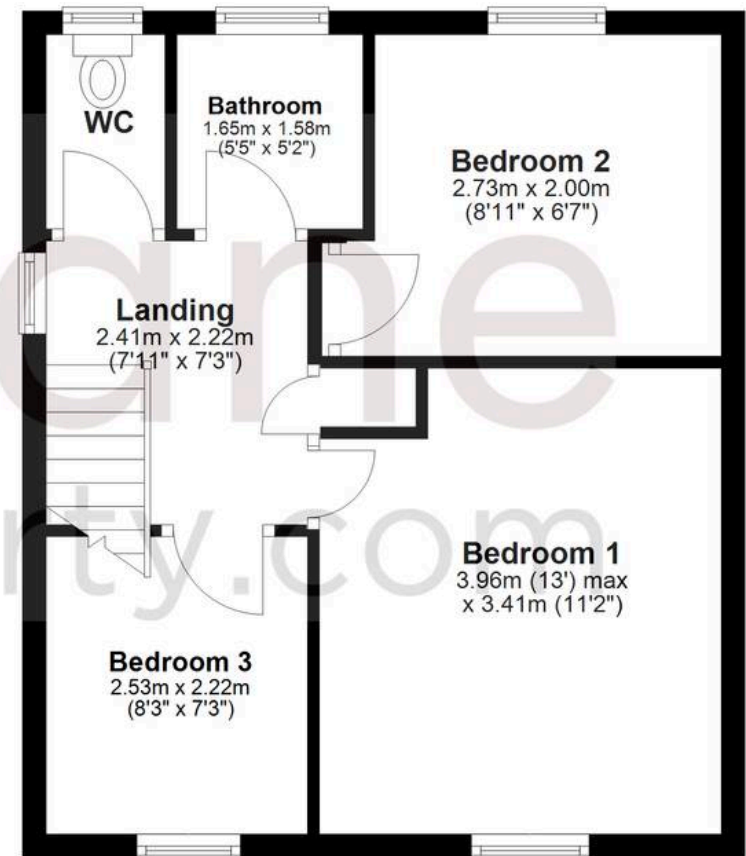
Ground Floor

Approx. 48.6 sq. metres (522.8 sq. feet)



First Floor

Approx. 38.5 sq. metres (414.5 sq. feet)



Total area: approx. 87.1 sq. metres (937.3 sq. feet)

Agents Note: Whilst every care has been taken to prepare these sales particulars, they are for guidance purposes only. All measurements are approximate and are for general guidance purposes only and whilst every care has been taken to ensure their accuracy, they should not be relied upon and potential buyers are advised to recheck the measurements.