



John Tame Close, Fairford – GL7 4NP

Fairford

Guide Price **£425,000**

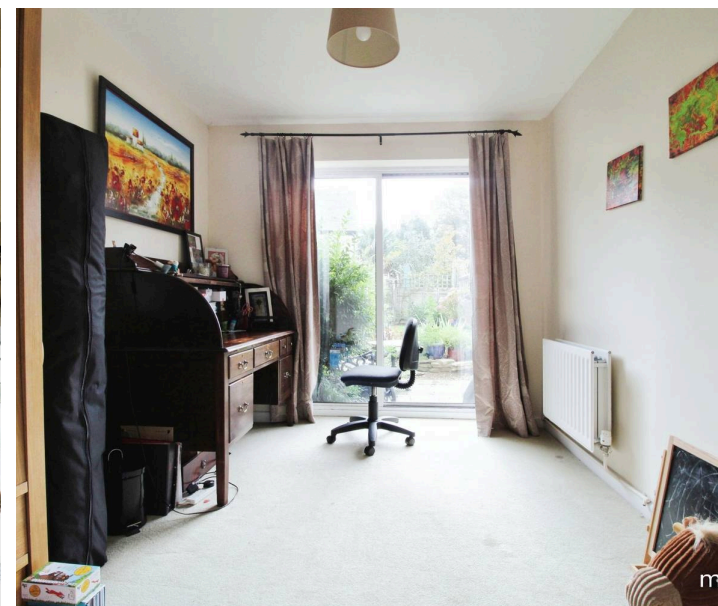
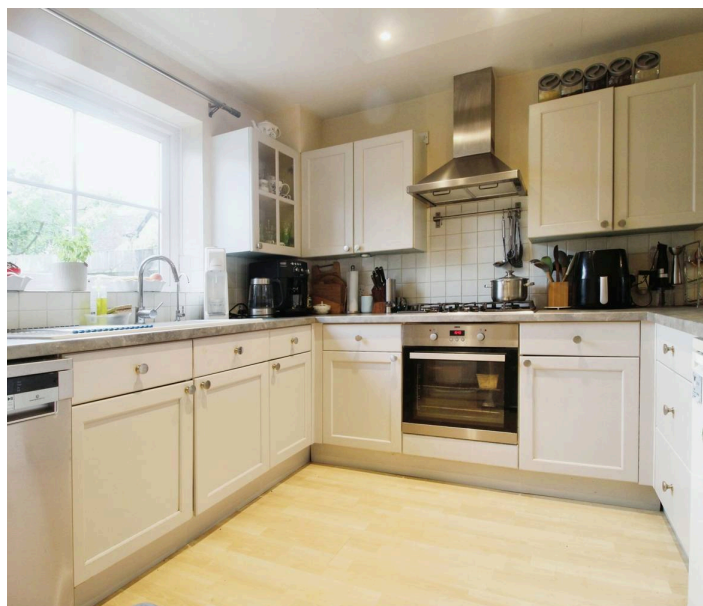
mcfarlane
property.com

John Tame Close

Fairford, Fairford

Spacious 4-bed family home in Fairford, Gloucestershire. Cul-de-sac location with easy access to amenities. Features living room, kitchen/dining room, utility room, mature gardens, and off-road parking. Contact McFarlane Cricklade for viewings: 01793 751 044.

- Improved & Extended Four Bedroom Home
- Three Reception Rooms
- FOUR Bedrooms
- Kitchen / Dining Room
- Study / Family Room
- Enclosed Mature Rear Gardens
- Off Road Parking for Two Cars
- Solar Panels
- Motivated Clients



John Tame Close

Fairford, Fairford

The market town of Fairford Gloucestershire is a sought after market town, There is a bustling high street with amenities and a 13th Century Church. The mill at Fairford is well renowned for its picturesque setting and views with the River Coln flowing through. The larger market town of Cirencester, is some 8 miles west.

Council Tax band: D

Tenure: Freehold

EPC Energy Efficiency Rating: C

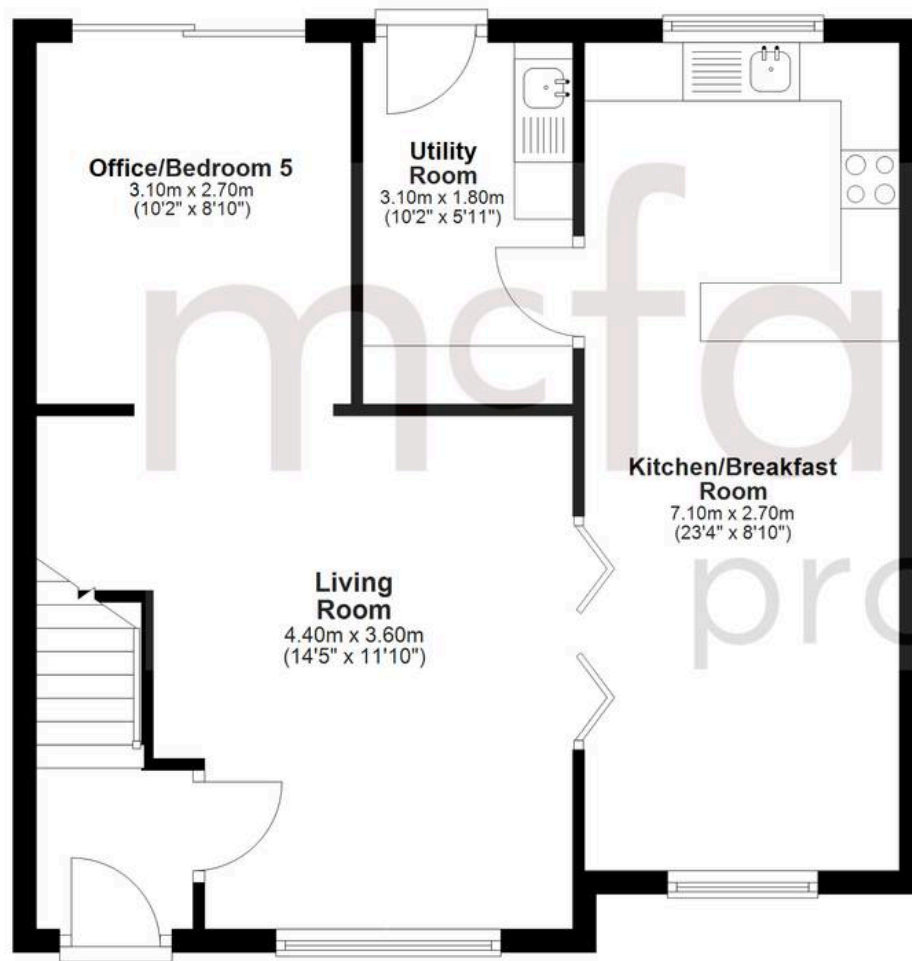
EPC Environmental Impact Rating: D



mcfarlane
property.com

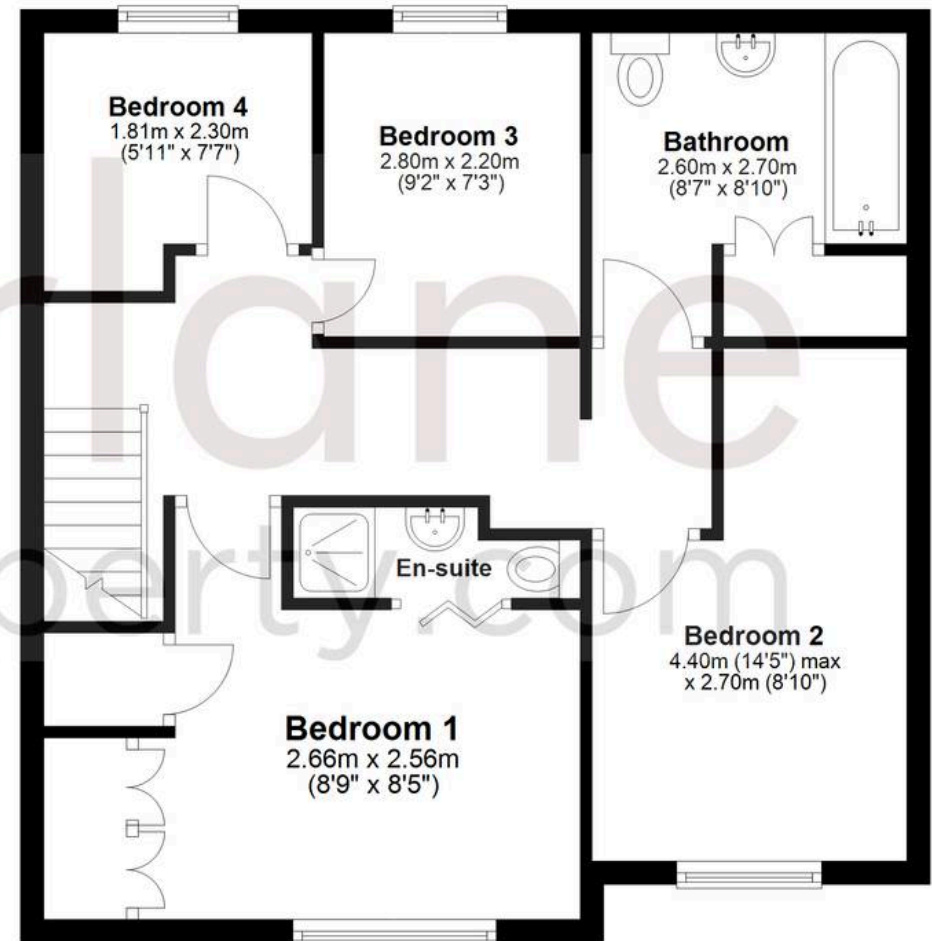
Ground Floor

Approx. 55.6 sq. metres (598.7 sq. feet)



First Floor

Approx. 55.3 sq. metres (594.9 sq. feet)



Total area: approx. 110.9 sq. metres (1193.7 sq. feet)

Agents Note: Whilst every care has been taken to prepare these sales particulars, they are for guidance purposes only. All measurements are approximate and for general guidance purposes only and whilst every care has been taken to ensure their accuracy, they should not be relied upon and potential buyers are advised to recheck the measurements.