



mcfarlano

Park Road

£450,000

Faringdon



Park Road

Faringdon

A three bedroom detached home comprising a spacious lounge and fantastic open plan kitchen / dining / family area with a separate utility room and French doors leading to the garden. Upstairs are three bedrooms each featuring an en suite shower room with the master benefiting from fitted wardrobes and an en suite bathroom.

Council Tax band: E

Tenure: Freehold

- READY TO MOVE INTO NEW HOME
- DETACHED
- MASTER SUITE WITH DRESSING AREA AND EN SUITE
- EN SUITE SHOWER ROOMS TO BEDROOMS TWO AND THREE
- FANTASTIC KITCHEN / DINING / FAMILY ROOM
- SEPARATE LOUNGE
- THREE DOUBLE BEDROOMS
- GARAGE AND DRIVEWAY PARKING
- UTILITY
- WC



Entrance Hall

Lounge

20' 3" x 12' 6" (6.18m x 3.80m)

Kitchen / Dining / Family

20' 3" x 15' 7" (6.18m x 4.75m)

Utility

5' 7" x 7' 2" (1.70m x 2.18m)

WC

Landing

Bedroom 1

12' 0" x 10' 10" (3.65m x 3.31m)

Dressing Area

En-suite

Bedroom 2

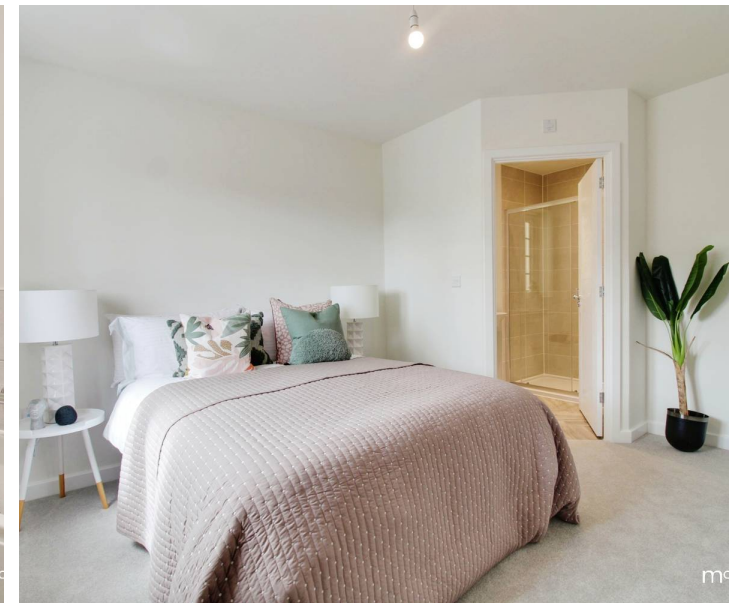
11' 2" x 12' 9" (3.41m x 3.88m)

En-suite

Bedroom 3

8' 10" x 11' 4" (2.68m x 3.46m)

En-suite





GARDEN

DRIVEWAY

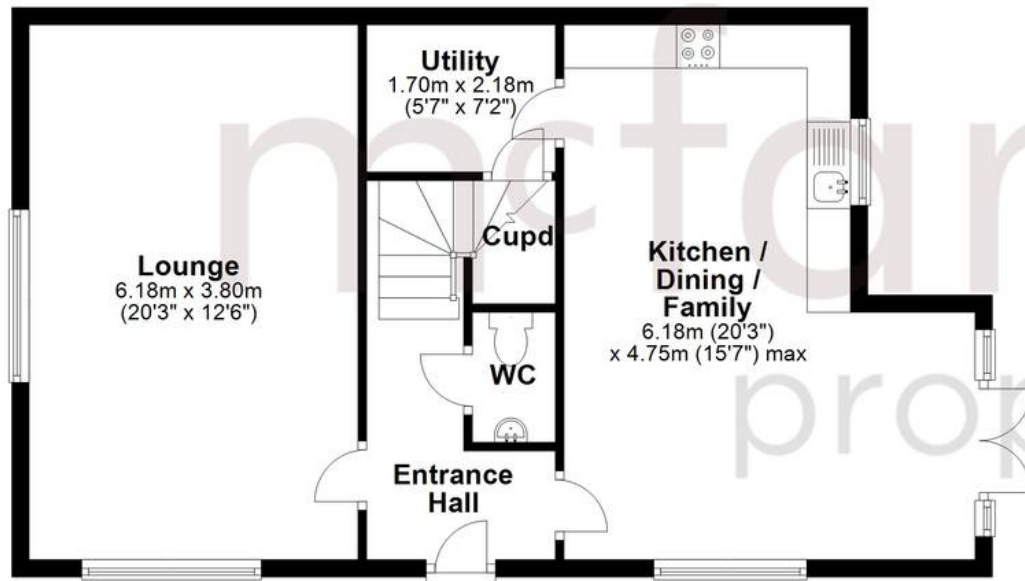
1 Parking Space

GARAGE

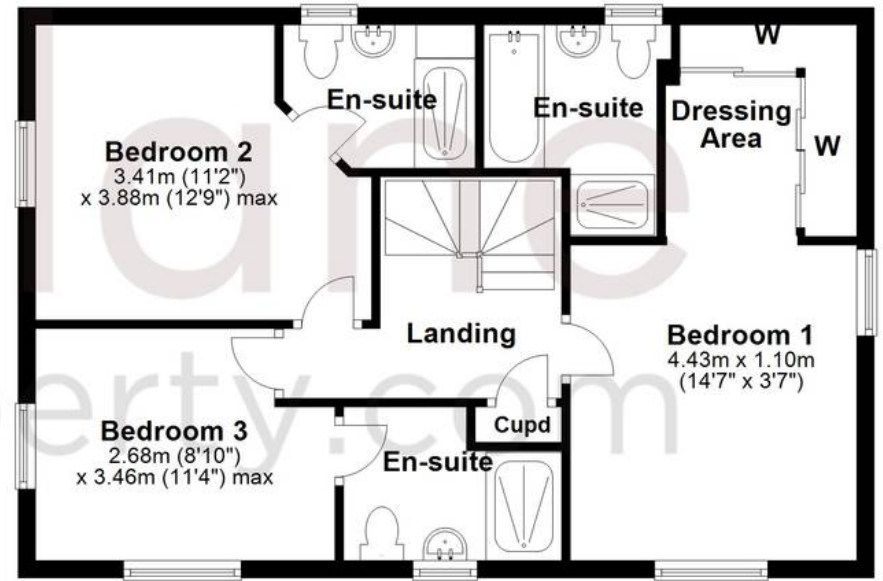
Single Garage



Ground Floor



First Floor





Cricklade Sales

Cricklade Sales, 36 High Street, Cricklade - SN6 6AY

01793 751044 • cricklade@mcfarlaneproperty.com • www.mcfarlaneproperty.com/