



**The Pry, Purton – SN5 4JP**  
Swindon

In Excess of **£450,000**

**mcfarlane**  
property.com



# The Pry

## Purton, Swindon

- Expansive Gardens
- Two / Three Bedrooms
- Set in 0.25 Acres
- Detached Garage / Workshop
- Period Detached Cottage

A delightful period cottage positioned between Purton and West Swindon on the side of the B4553 and set within approximately 0.25 acres. This period cottage boasts charm and feature plus the opinion to extend and alter (subject to planning and permission).





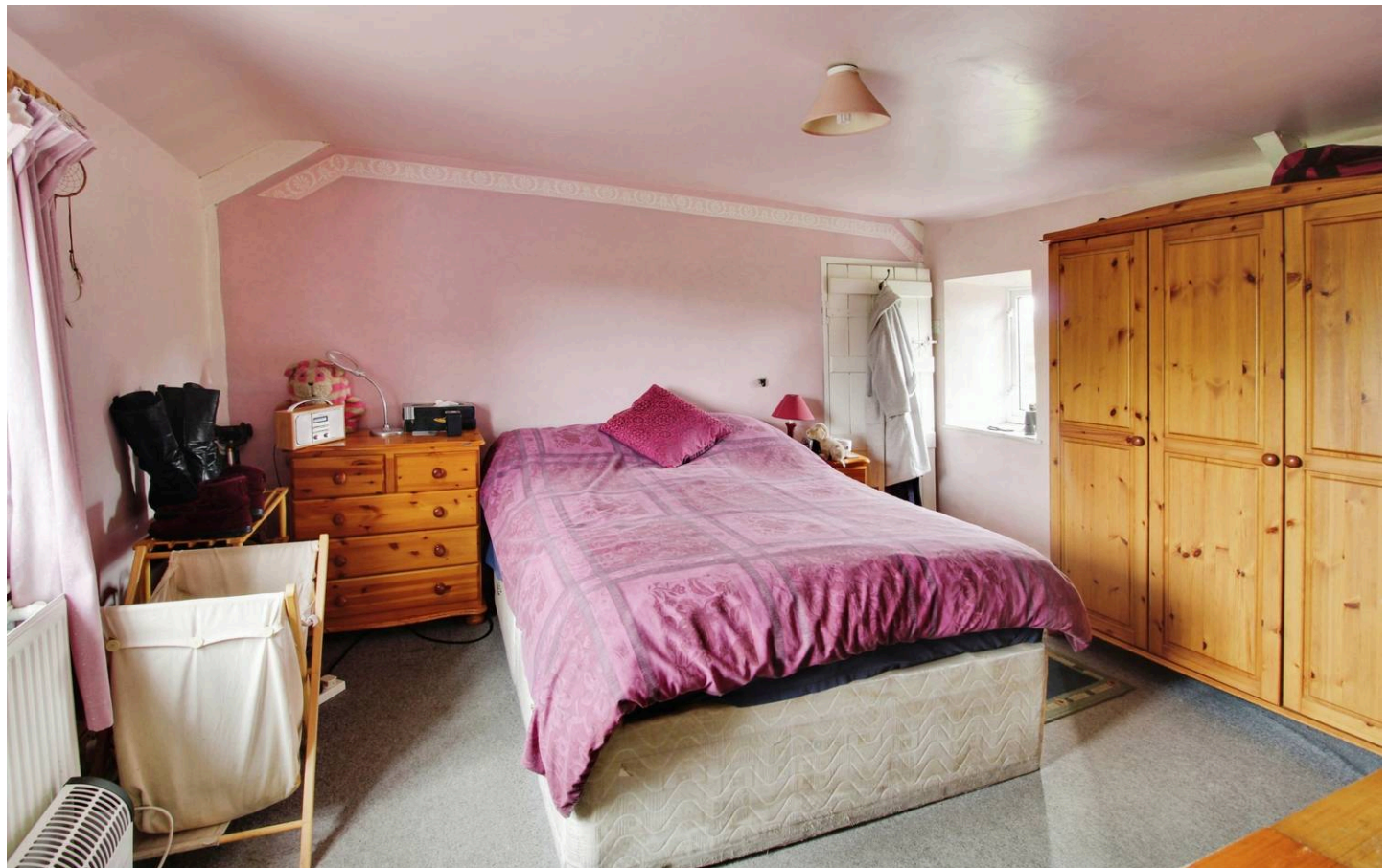
# The Pry

Purton, Swindon

Council Tax band: TBD

EPC Energy Efficiency Rating: D

EPC Environmental Impact Rating: E

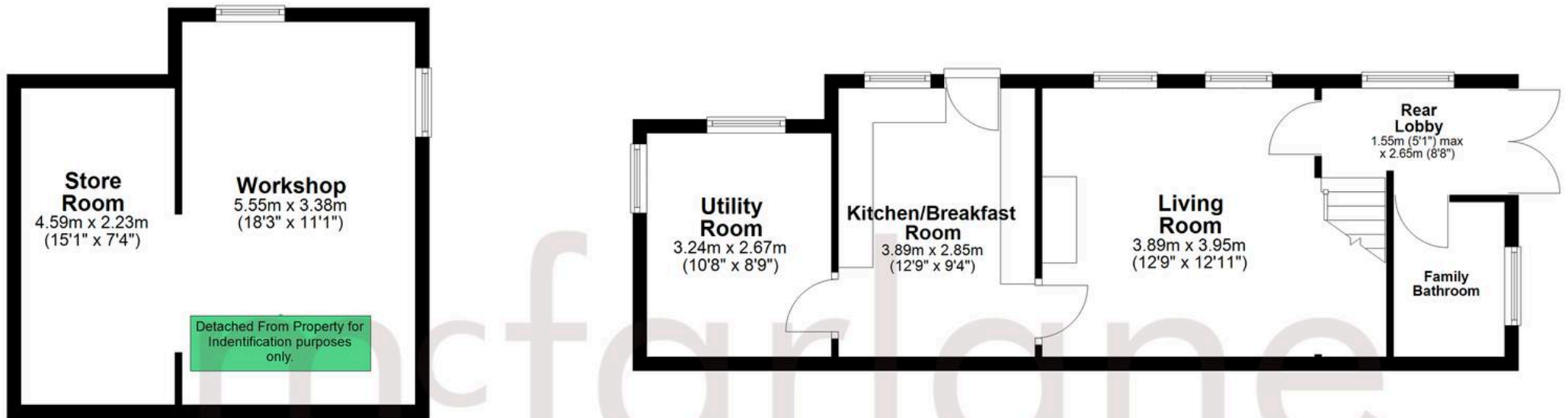


mcfarlane  
property.com



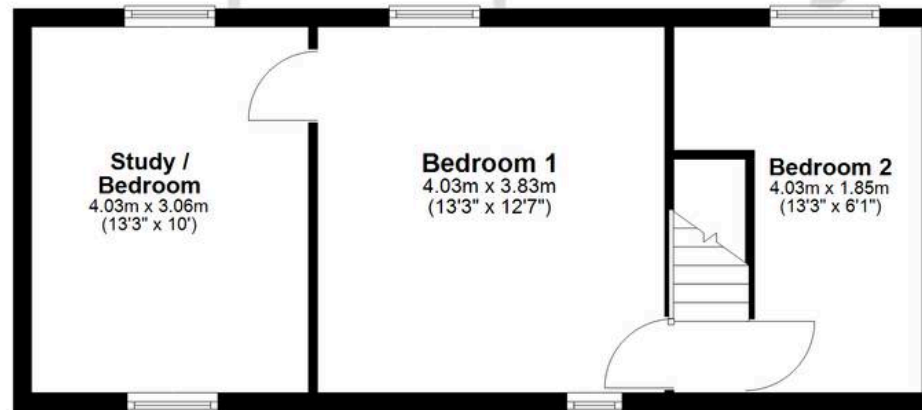
## Ground Floor

Approx. 76.0 sq. metres (817.8 sq. feet)



## First Floor

Approx. 39.6 sq. metres (426.7 sq. feet)



Total area: approx. 115.6 sq. metres (1244.5 sq. feet)

Agents Note: Whilst every care has been taken to prepare these sales particulars, they are for guidance purposes only. All measurements are approximate are for general guidance purposes only and whilst every care has been taken to ensure their accuracy, they should not be relied upon and potential buyers are advised to recheck the measurements.