



mcfarlane
property.com



Modern Three Bedroom Home

Ridgeway Farm, Purton, Swindon, SN5 4GS

Offers in Excess Of £300,000

mcfarlane
property.com

Modern Family Home

Ridgeway Farm, West Swindon, Wiltshire

-
- Modern Family Home in Ridgeway Farm
 - Three Bedrooms Plus En-Suite (Master)
 - Modern Contemporary Styling and Decor
-

A well-presented and proportioned Three Bedroom family home on the sought after Ridgeway Farm Development. The updated well decorated accommodation comprises flexible living accommodation with Three well proportioned bedrooms and en-suite shower room to the master bedroom. A summary of accommodation comprises: Entrance Hallway, Living Room, Cloakroom, Kitchen / Dining Room, and Storage. The First Floor consists of Three Bedrooms, Family Bathroom plus En-Suite to the Master. Well proportioned Gardens with Rear Access plus Two Allocated Parking Spaces Directly to the Front. uPVC Double Glazing & Gas Central Heating. Viewing by Appointment with Sole Agents McFarlane Sales & Lettings 01793 751 044.



Viewings by Appointment Only

McFarlane Sales & Lettings

(01793) 751 044

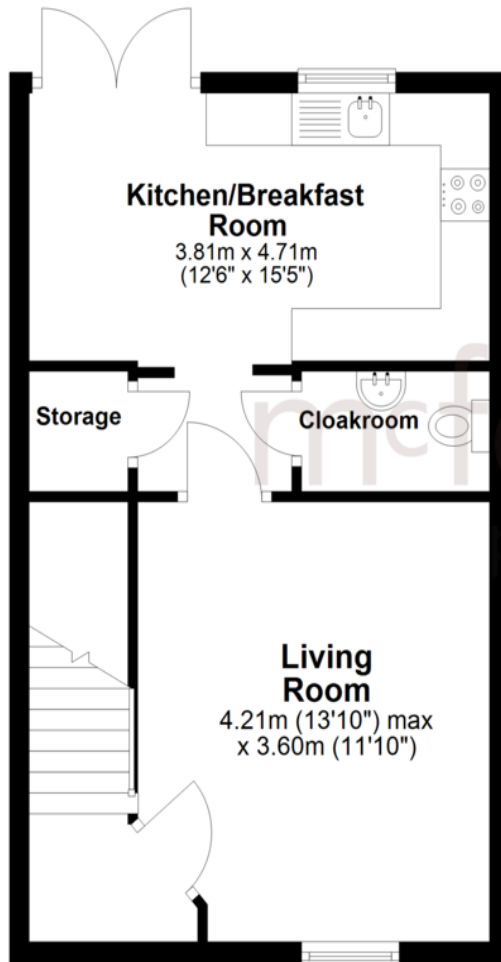


mcfarlane
property.com



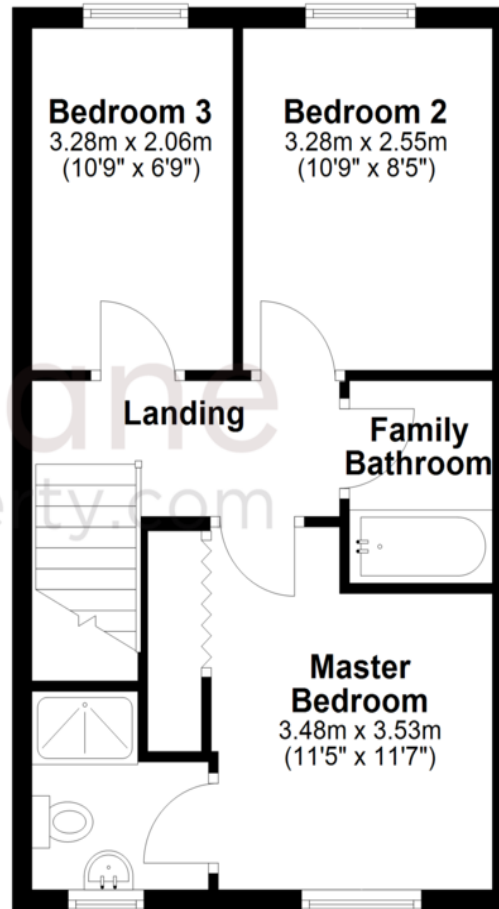
Ground Floor

Approx. 38.3 sq. metres (412.0 sq. feet)



First Floor

Approx. 38.9 sq. metres (418.3 sq. feet)



Total area: approx. 77.1 sq. metres (830.4 sq. feet)

We 
where you
LIVE

Our team are friendly, experienced and are all local. They know it better than they do their own living rooms and can help you find what you're looking for because **we love where we live.**

We would be delighted to show you around this property.

**Because every home
needs a personal touch.**

**If you would like to view this
property then please get in touch.**

 01793 751044

 cricklade@mcfarlaneproperty.com

mcfarlaneproperty.com

mcfarlane
property.com

Cricklade.
102 High Street
Cricklade SN6 6AA
 01793 751044

Marlborough.
106 High Street
Marlborough SN8 1LT
 01672 514380

Old Town.
28-30 Wood Street
Swindon SN1 4AB
 01793 296880

Swindon.
The Village Centre,
Redhouse SN25 2FW
 01793 296600

Agents Note: Whilst every care has been taken to prepare these sales particulars, they are for guidance purposes only. All measurements are approximate and are for general guidance purposes only and whilst every care has been taken to ensure their accuracy, they should not be relied upon and potential buyers are advised to recheck the measurements