



2 Bedrooms End Terraced House Guide Price £300,000

3 Bath Court, Bath Road, Cricklade, Swindon, SN6 6DY

mcfarlane
property.com

2 Bedrooms End Terraced Swindon, Cricklade

- CHARMING TWO BEDROOM COTTAGE
- REFURBISHED THROUGHOUT
- WALKING DISTANCE TO LOCAL AMENITIES

- DELIGHTFUL TWO BEDROOM COTTAGE -
WALKING DISTANCE TO ALL LOCAL AMENITIES -
REFURBISHED TO A HIGH STANDARD - SPACIOUS
ACCOMMODATION - ENCLOSED REAR GARDEN -
GARAGE & REAR VEHICULAR ACCESS -

Located just off the High Street in Cricklade this charming and attractive two double bedroom cottage offers spacious accommodation and simply MUST BE VIEWED. The accommodation briefly comprises: Entrance Hall, Lounge/Dining Room, Fitted Kitchen, Cloakroom, Landing Two Double Bedrooms and Refitted Bathroom. Outside there is an enclosed Rear Garden with Private Rear Access and Single Garage. Call McFarlane Sales & Lettings Cricklade 01793 751 044 SOLE AGENTS.

Property description

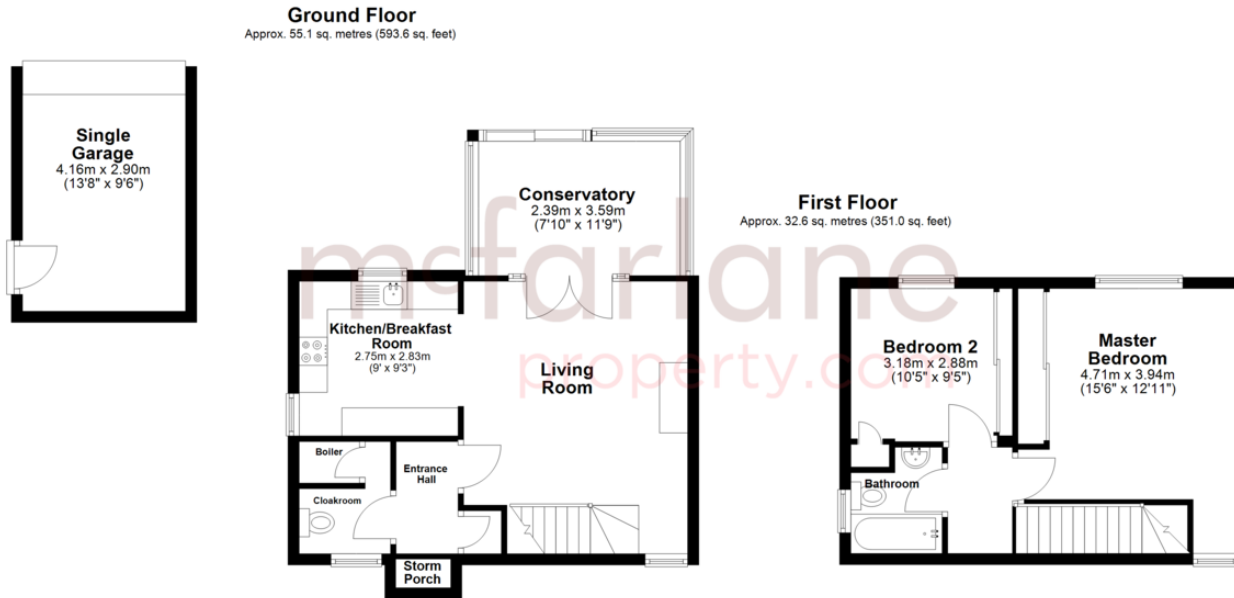
AGENTS NOTE

Under the terms of the estate agents 1979, we are obliged to inform you the seller of this property is an employee of McFarlane Sales & Lettings.





We where you LIVE



Our team are friendly, experienced and are all local. They know it better than they do their own living rooms and can help you find what you're looking for because **we love where we live.**

We would be delighted to show you around this property.

Because every home needs a personal touch.

If you would like to view this property then please get in touch.

📞 01793 751044

✉ cricklade@mcfarlaneproperty.com

mcfarlaneproperty.com

mcfarlane
property.com

Cricklade.
102 High Street
Cricklade SN6 6AA
📞 01793 751044

Marlborough.
106 High Street
Marlborough SN8 1LT
📞 01672 514380

Old Town.
28-30 Wood Street
Swindon SN1 4AB
📞 01793 296880

Swindon.
The Village Centre,
Redhouse SN25 2FW
📞 01793 296600

Agents Note: Whilst every care has been taken to prepare these sales particulars, they are for guidance purposes only. All measurements are approximate are for general guidance purposes only and whilst every care has been taken to ensure their accuracy, they should not be relied upon and potential buyers are advised to recheck the measurements