



Gilbert Street, Mayfair, W1K

Kinleigh Folkard & Hayward





**Gilbert Street,
Mayfair, W1K**
£1,899,995
Leasehold

The view is outstanding and the location is superb. The numerous amenities that Mayfair, Marylebone and Oxford Street have to offer are literally on your doorstep and the open spaces of Hyde Park are an easy walk away.

- 29 ft Open plan living
- Two bedrooms
- Fourth floor
- Bathroom and shower room
- Newly refurbished
- Lift
- Internal area 1042 sqft
- EPC Rating D

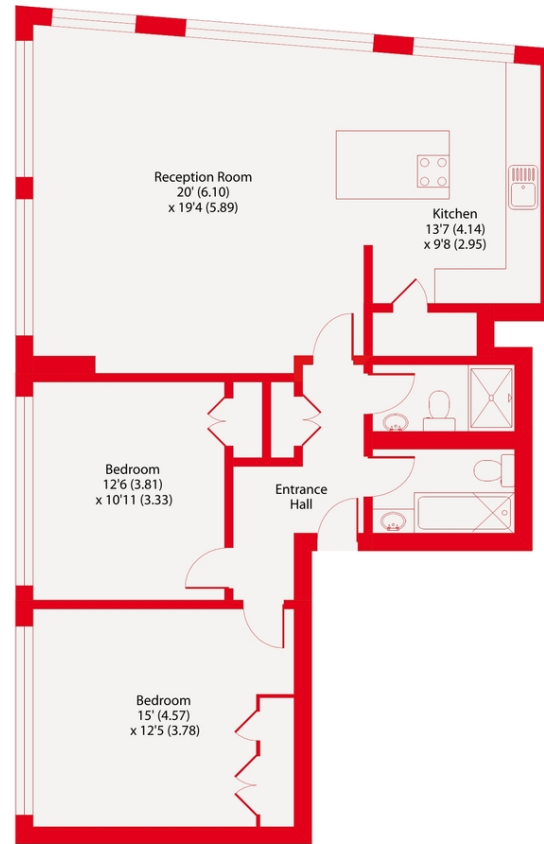
A stunning newly refurbished two bedroom apartment located right by Bond Street station with views towards Selfridges. It features parquet floors, contemporary bathrooms and kitchen.

For more information or to arrange a viewing please contact:

Marylebone
136 Baker Street
Marylebone, W1U 6FL
020 7486 5551
marylebone.sales@kfh.co.uk

Kinleigh Folkard & Hayward





Fourth Floor

Gilbert Street, W1K
Approximate Area = 1042 sq ft / 96.8 sq m
For identification only - Not to scale

Kinleigh Folkard & Hayward



Floor plan produced in accordance with RICS Property Measurement Standards incorporating International Property Measurement Standards (IPMS2 Residential). © nichecom 2022. Produced for Kinleigh Folkard & Hayward. REF: 802887

These particulars are believed to be correct but their accuracy is not guaranteed and they do not form part of any contract. Whilst every effort is made to ensure the accuracy of these details, it should be noted that the above measurements are approximate only. Floorplans are for representation purposes only and prepared according to the RICS Code of Measuring Practice by our floorplan provider. Therefore, the layout of doors, windows and rooms are approximate should be regarded as such by any prospective purchaser. Any internal photographs are intended as a guide only and it should not be assumed that any of the furniture/fittings are included in any sale. Where shown, details of lease, ground rent and service charge are provided by the vendor and their accuracy cannot be guaranteed, as the information may not have been verified and further checks should be made either through your solicitor/conveyancer or by referring to the home information pack for this property. Where appliances, including central heating, are mentioned, it cannot be assumed that they are in working order, as they have not been tested. Please also note that wiring, plumbing and drains have not been checked.

