

123 -125 High Street, Rushden, Northamptonshire, NN10 0NZ
Tel: 01933 316 131 Email: info.rushden@primechoiceproperties.co.uk
www.primechoiceproperties.co.uk



South Grove , Wymington, NN10 9LR

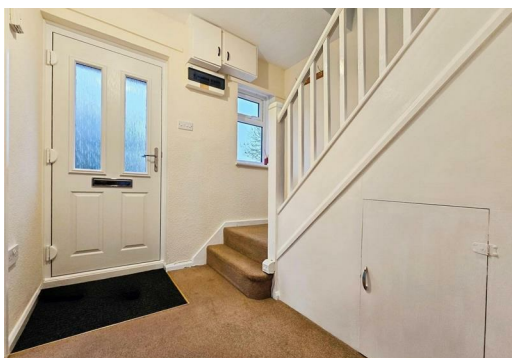
£995 PCM



Available now is this well-presented two-bedroom semi-detached house, located in the sought-after village of Wymington, with easy access to the Sharnbrook school catchment. The property has been recently refurbished to a good standard and offers spacious accommodation throughout. Benefits include new gas central heating and new double glazing. The accommodation comprises a lounge/diner, fitted kitchen with cooker, first-floor bathroom with shower over bath, and two double bedrooms. Outside, the home features generous rear and side gardens with brick outbuildings. Internal viewing is highly recommended.

Property Available From: Now

Need more information? For FAQs, council tax details, local schools, area guides, and to join our mailing list, please visit our website.



Garden

Any potential applicant needs to take into consideration the substantial garden that comes with the property. You will be responsible for maintaining the garden and surrounding bushes/briars. You will also be responsible for supplying your own tools to do this.

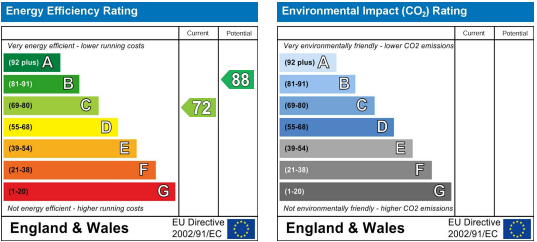
Area Map



Floor Plans



Energy Efficiency Graph



These particulars, whilst believed to be accurate are set out as a general outline only for guidance and do not constitute any part of an offer or contract. Intending purchasers should not rely on them as statements of representation of fact, but must satisfy themselves by inspection or otherwise as to their accuracy. No person in this firms employment has the authority to make or give any representation or warranty in respect of the property.

