

123 -125 High Street, Rushden, Northamptonshire, NN10 0NZ
Tel: 01933 316 131 Email: info.rushden@primechoiceproperties.co.uk
www.primechoiceproperties.co.uk



Scarborough Walk , Corby, NN18 0NR

Chain Free £230,000



Prime Choice Kettering are pleased to present this high-performing, fully licensed five-bedroom HMO, ideally located in one of Corby's most desirable residential areas. Offering strong rental returns and consistent tenant demand, this is an excellent opportunity for seasoned investors or those looking to expand their portfolio with a reliable income-producing asset. Currently fully occupied with five tenants in situ, the property provides immediate rental income and achieves a gross rental yield of over 11%, making it a highly attractive investment proposition.

Internally, the property offers a spacious open-plan kitchen and dining area, ideal for communal use. The accommodation comprises five bedrooms, three generously sized doubles and two comfortable singles, each benefiting from natural light and practical layouts well suited for professional house shares. The property further includes a shower room and a full family bathroom for added convenience. Externally, the home enjoys substantial front and rear gardens, enhancing tenant appeal and providing valuable outdoor space.

Corby remains one of the East Midlands' fastest-growing towns, benefiting from ongoing investment, regeneration projects, and a rising population. Excellent transport links including direct rail services to London St Pancras, combined with expanding employment opportunities ensure continued strong rental demand. This is a rare opportunity to acquire a stable, income-generating HMO in a thriving location. Early viewing is highly recommended.



Hallway

A practical and tidy entrance hall giving access to the ground-floor rooms and staircase. Easy to maintain and ideal for shared living, with space for coat hooks or a small shoe rack.

Kitchen and Dining Room

20'09" x 08'09" (6.32m x 2.67m)
A large and well-equipped communal kitchen, ideal for multiple occupants. Stretching the full width of the property, the space allows for separate food prep zones and additional storage. Patio doors open to the rear, providing plenty of natural light and easy access to the garden, perfect for drying laundry or relaxing outdoors.

Shower Room

A generously sized ground-floor shower room fitted with a walk-in shower, WC and basin. Serves both the ground-floor bedroom and general household use, offering convenience for busy morning routines.

Room One

12'07" x 11'08" (3.84m x 3.56m)
A spacious ground-floor double room suitable for a professional tenant. The room benefits from a large window offering good natural light and can comfortably accommodate a double bed, wardrobe, desk and additional storage.

Room Two

12'9" x 09'08" (3.89m x 2.95m)
A spacious double bedroom positioned at the rear of the property, offering a peaceful setting for tenants. Ample floor space for a double bed, wardrobe and desk.

Room Three

13'5" x 07'10" (4.09m x 2.39m)
A well-proportioned bedroom located at the front of the property. Ideal for a professional seeking a comfortable space, with room for a double bed or a large single, plus storage and desk space.

Room Four

10'5" x 07'03" (3.18m x 2.21m)
A bright and efficient room suitable as a single occupancy bedroom.

Room Five

09'04" x 07'03" (2.84m x 2.21m)
Another single occupancy room, located at the rear of the property. Compact but highly functional, ideal for tenants who prioritise privacy and value.

Main Bathroom

A shared first-floor bathroom equipped with a full bathtub, WC, and basin. Conveniently positioned for all upstairs tenants.

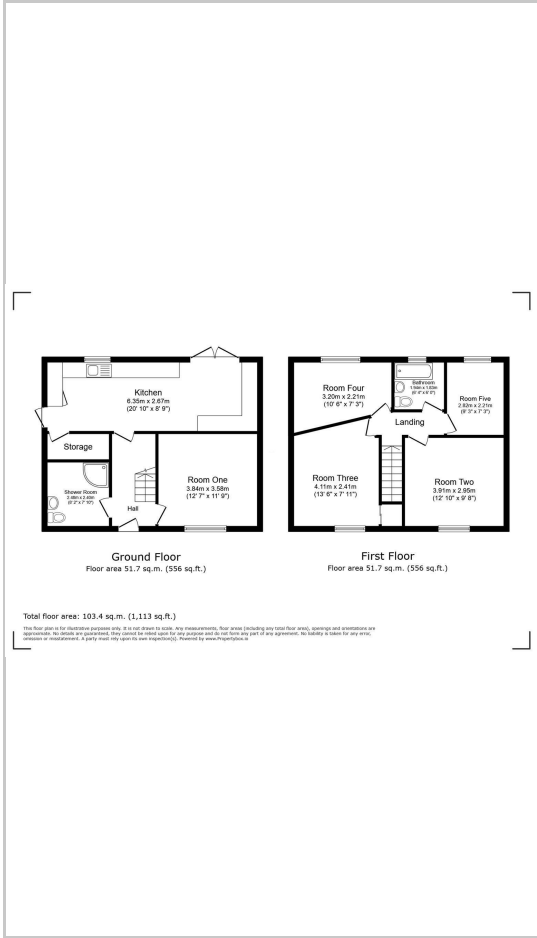
Disclaimer:

- 1. MONEY LAUNDERING REGULATIONS - Intending purchasers will be asked to produce identification documentation at a later stage and we would ask for your co-operation in order that there will be no delay in agreeing the sale.
- 2: These particulars do not constitute part or all of an offer or contract.
- 3: The measurements indicated are supplied for guidance only and as such must be considered incorrect.
- 4: Potential buyers are advised to recheck the measurements before committing to any expense.
- 5: Prime Choice Ltd has not tested any apparatus, equipment, fixtures, fittings or services and it is the buyers interests to check the working condition of any appliances.
- 6: Prime Choice Ltd has not sought to verify the legal title of the property and the buyers must obtain verification from their solicitor.

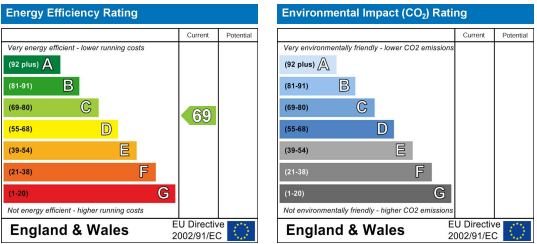
Area Map



Floor Plans



Energy Efficiency Graph



These particulars, whilst believed to be accurate are set out as a general outline only for guidance and do not constitute any part of an offer or contract. Intending purchasers should not rely on them as statements of representation of fact, but must satisfy themselves by inspection or otherwise as to their accuracy. No person in this firms employment has the authority to make or give any representation or warranty in respect of the property.