



123 -125 High Street, Rushden, Northamptonshire, NN10 0NZ
Tel: 01933 316 131 Email: info.rushden@primechoiceproperties.co.uk
www.primchoiceproperties.co.uk



Northampton Road , Wellingborough, NN8 3PL

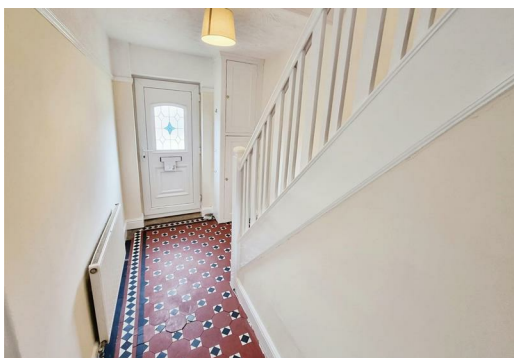
£1,200 PCM



Located within one of Wellingborough's most popular residential areas, we highly recommend viewing this spacious 3 bedroom semi-detached property. The accommodation comprises a lounge, dining room with bay window, downstairs cloakroom, kitchen with oven and hob, washing machine and built in fridge and dishwasher, family bathroom with shower cubicle and 2 double bedrooms (1 with fitted wardrobes) and 1 single. The Additional benefits include a spacious front & rear garden, secondary double glazing and gas central heating.

Property Available From: 2nd July 2024.

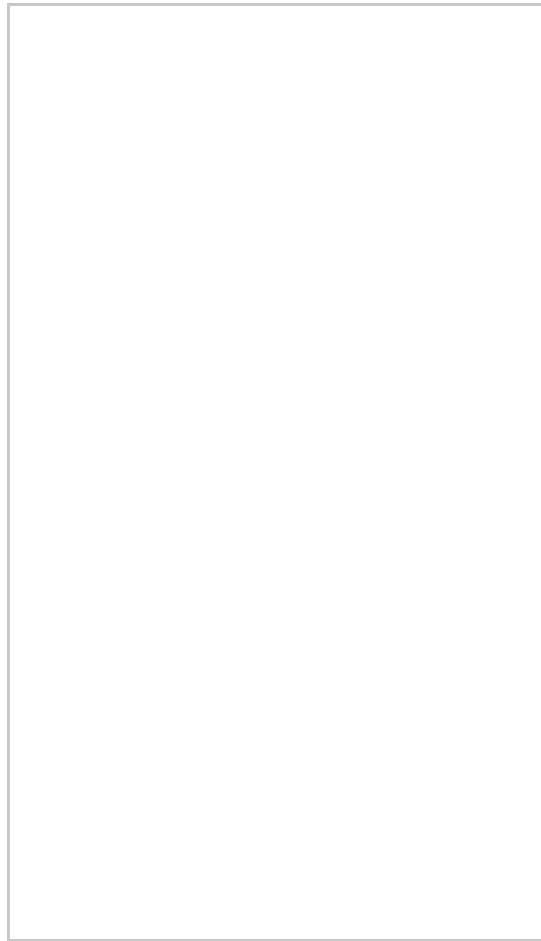
Need more information? For FAQs, information about council tax and local schools, area guides and to join our mailing list, visit our website.



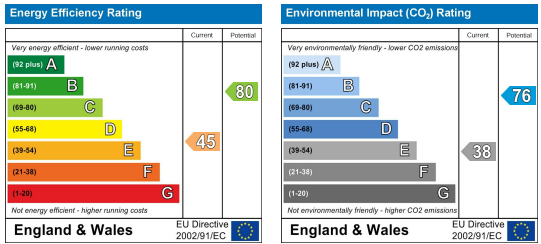
Area Map



Floor Plans



Energy Efficiency Graph



These particulars, whilst believed to be accurate are set out as a general outline only for guidance and do not constitute any part of an offer or contract. Intending purchasers should not rely on them as statements of representation of fact, but must satisfy themselves by inspection or otherwise as to their accuracy. No person in this firm's employment has the authority to make or give any representation or warranty in respect of the property.

