

75 Montagu Street, Kettering, Northamptonshire, NN16 8XQ  
Tel: 01536 517951 Email: info.kettering@primechoiceproperties.co.uk  
www.primchoiceproperties.co.uk



## Yarwell Court

Highfield Crescent, Kettering, NN15 6JT

£625 PCM

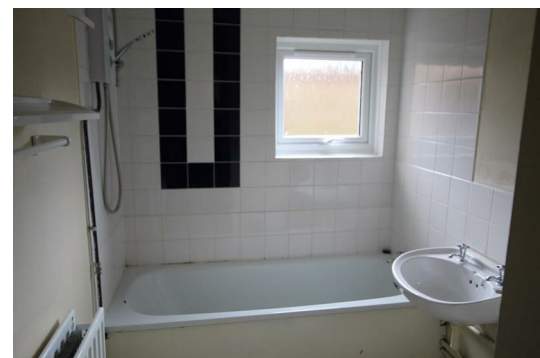


We are pleased to offer this one bedroom ground floor flat situated close to Wicksteed Park and within easy access to the A14. The property is offered part furnished with gas central heating. The accommodation comprises of a large lounge/diner, kitchen, bathroom and a large double bedroom. There is the advantage of off road parking and has a communal garden to rear.

Available 12/08/2024

Need more information? for FAQs, information about council tax and local schools, area guides and to join our mailing list. Visit our website [www.primchoiceproperties.co.uk](http://www.primchoiceproperties.co.uk)

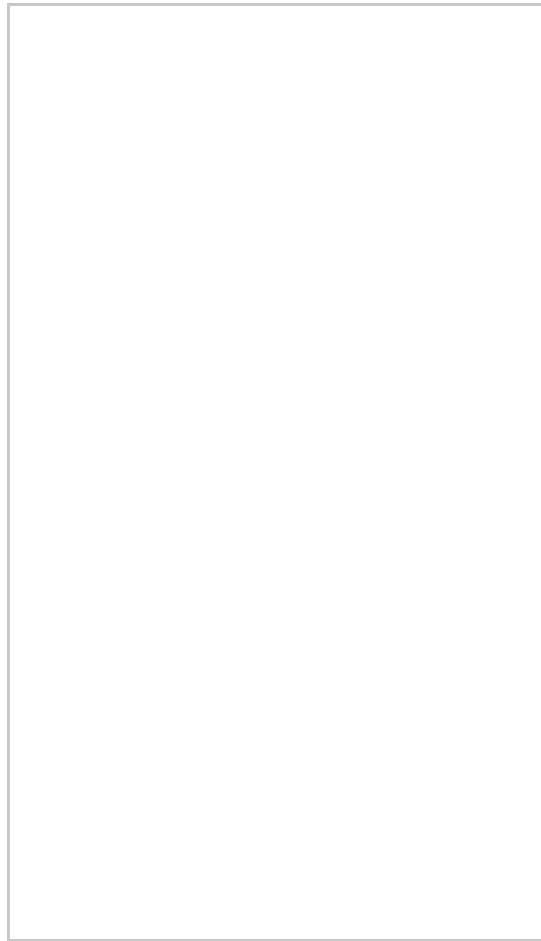
No Smokers, No DSS or Pets



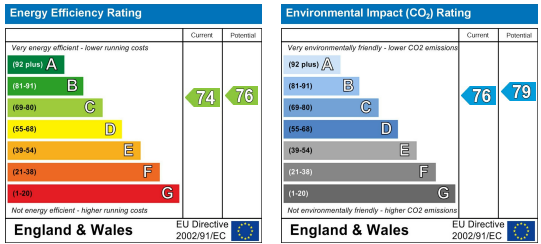
## Area Map



## Floor Plans



## Energy Efficiency Graph



These particulars, whilst believed to be accurate are set out as a general outline only for guidance and do not constitute any part of an offer or contract. Intending purchasers should not rely on them as statements of representation of fact, but must satisfy themselves by inspection or otherwise as to their accuracy. No person in this firm's employment has the authority to make or give any representation or warranty in respect of the property.

