



222 Kings Arms Seaside, Eastbourne, BN22 7QX £975 Per Calendar Month



LARGE TWO BEDROOM FLAT - AVAILABLE NOW

Just a stones throw away from the beautiful beaches of Eastbourne this newly renovated apartment is available NOW.

This two bedroom property is offered unfurnished.

Gas central heating.

White goods included.

EPC Rating: C

Council Tax Band: B

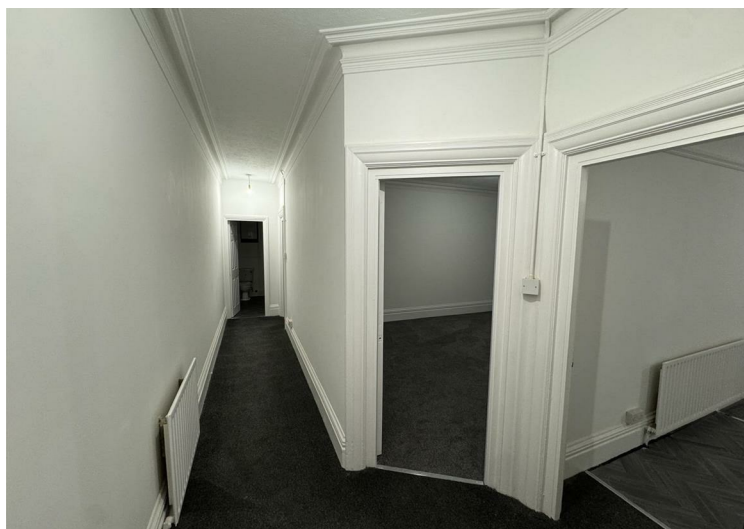
Viewing

To arrange a viewing on this property or require further information please contact one of our team on 01202 315 800





Energy Efficiency Rating		Current	Potential
Vary energy efficient - lower running costs			
(92 plus) A			
(81-91) B			
(69-80) C			
(55-68) D			
(39-54) E			
(21-38) F			
(1-20) G			
Not energy efficient - higher running costs			
England & Wales			EU Directive 2002/91/EC



These particulars, whilst believed to be accurate are set out as a general outline only for guidance and do not constitute any part of an offer or contract. Intending purchasers should not rely on them as statements of representation of fact, but must satisfy themselves by inspection or otherwise as to their accuracy. No person in this firm's employment has the authority to make or give any representation or warranty in respect of the property.