

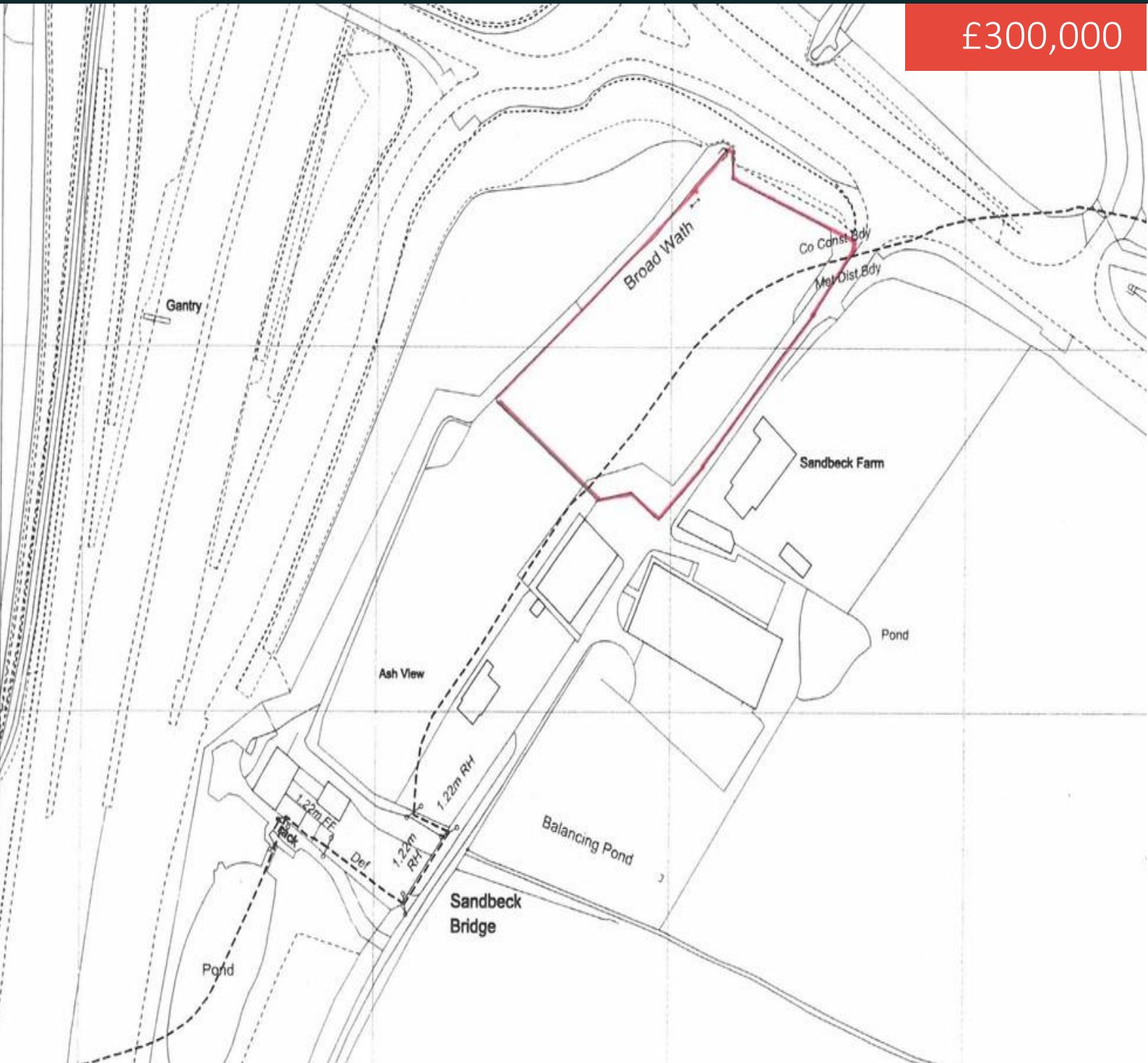


# THOMLINSONS

— 1870 —

## Building Plot, Sandbeck Lane, Off Racecourse Approach,

£300,000



**BUILDING PLOT | OUTLINE PERMISSION FOR TWO DETACHED DWELLINGS | 1.32 ACRES**  
A building plot extending to 1.32 aces( approx.)  
with outline planning permission for two detached dwellings with garages.



01937582748 | [www.thomlinsons.co.uk](http://www.thomlinsons.co.uk)

