



The Brae

Bellfield Road, Eddleston, Scottish Borders EH45 8QR



Blackwood & Smith LLP
SOLICITORS AND ESTATE AGENTS



Welcome to

The Brae

Beautifully presented with sympathetically modern fixtures and fittings, tasteful décor, and characterful original features, this unique detached house in the heart of the village of Eddleston dates back to the early 20th century and offers four bedrooms, a large living room, a fabulous dining kitchen, and a contemporary family bathroom (plus a separate WC), as well as delightful, well-stocked mature gardens and a private driveway.

The property is screened from the road by large leafy hedges, and it is approached via a driveway.

Features

- Traditional, early 20th-century detached house in Eddleston
- Beautifully presented, tasteful interiors
- Entrance vestibule with practical storage for coats and boots
- Hallway with under-stairs storage
- Large, characterful living room with fireplace and log-burner
- Sociable dining kitchen with breakfast bar and large separate utility room
- Four double bedrooms (one with an en-suite WC)
- Stylish bathroom with rainfall shower-over-bath
- Mature, secluded front and rear gardens
- Private multi-car driveway
- Oil-fired central heating & predominantly double glazing
- EPC Rating - F





Spacious living room

with fireplace and log-burner

The front door opens into an entrance vestibule leading through to an airy hallway, immediately setting the tone for the interiors to follow. Through the hallway is a wonderfully bright and spacious living room, where a generous footprint allows for endless configurations of lounge furniture, all arranged around a striking fireplace with a log-burning stove inset. The room is elegantly decorated in pared-back tones, enhanced by original wood flooring and traditional cornicing.





Dining kitchen

with breakfast bar and large
separate utility room



The kitchen is sure to be the sociable hub of this family home, with ample space for a dining area, including bespoke window seating, and a handcrafted, sycamore breakfast bar offering perfect spaces for family meals, entertaining, and socialising while cooking. The German Hacker kitchen (fitted in 2019) is beautifully appointed with Shaker wall and base cabinets, absolute black granite worktops, and metro-tiled splashbacks, with a cream Aga stove taking centre stage and a dishwasher integrated. A large separate utility room complements the kitchen and houses additional cabinetry, beech worktops, a ceramic sink, and an integrated oven, hob, and extractor hood, alongside space for freestanding and undercounter appliances.





bs

The home has four double bedrooms, with one on the ground floor and the remaining three on the first floor. The ground-floor bedroom is stylishly presented with navy-blue décor and a limestone tiled floor, is accompanied by an en-suite WC, and it is currently being utilised as a home office, highlighting the home's versatility. The first-floor bedrooms are all tastefully decorated and fitted with original wood flooring, and one has a characterful fireplace.

Principal bedroom

with original wood flooring





Bathroom

with rainfall shower-over-bath

Finally, a bathroom (fitted in 2018) completes the accommodation on offer, presented with chic wall and floor tiling and comprising a bath with a rainfall shower and glazed screen, a basin set into vanity storage, and a WC.

Oil-fired central heating and predominantly double glazing (with secondary glazing on the few small single-glazed windows) ensure year-round comfort and efficiency. The boiler and water tank were both replaced in 2018.



Gardens & Parking

Secluded front and rear gardens

Externally, the house is perfectly complemented by mature, secluded front and rear gardens featuring lawns, a wealth of leafy, established trees and hedges, and a paved area for outdoor seating and barbecues. The rear garden slopes down and enjoys wonderful open views over the valley, offering a tranquil space in which to relax during the warmer months. To the front of the house is a private driveway and an external store.

Extras: All window blinds, light fittings, and integrated kitchen appliances will be included in the sale.



Eddleston

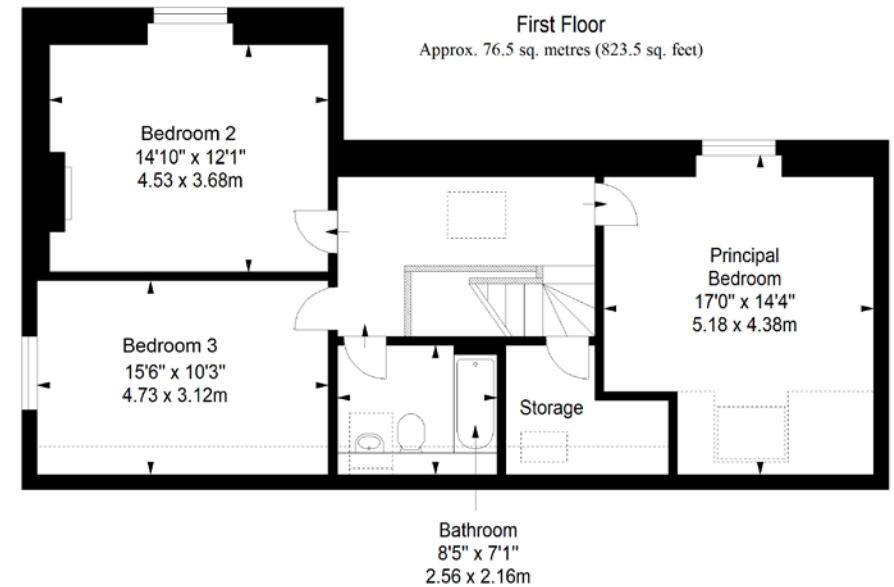
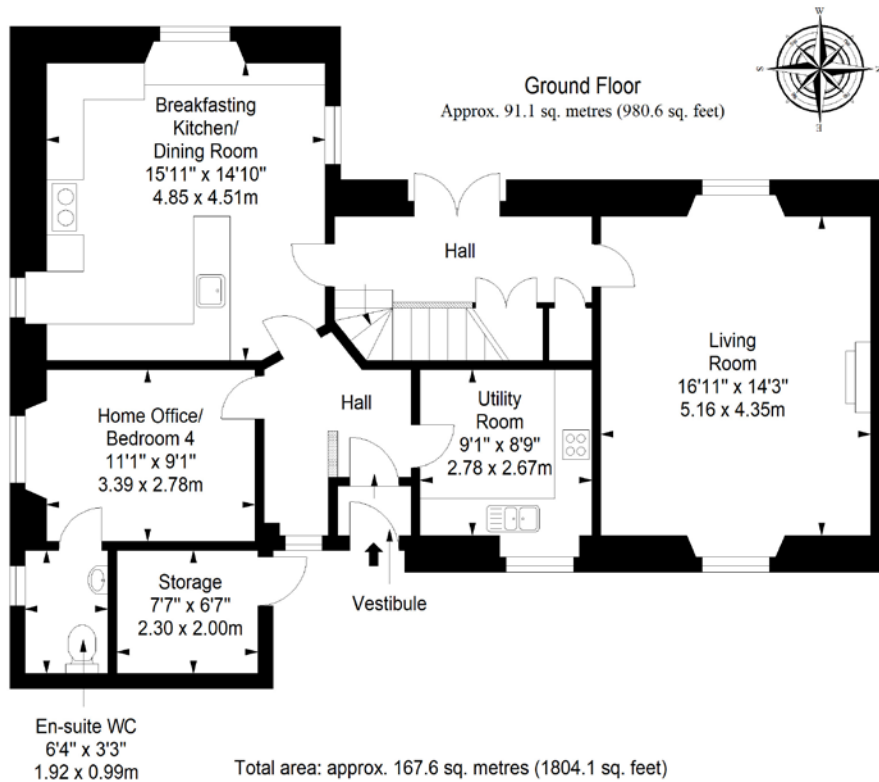
Scottish Borders

bs
Buchwood Smith

The Brae

The small and picturesque conservation village of Eddleston in the unspoilt Borders countryside, offers the best of both worlds: a rural haven only 4-miles from Peebles yet only a short 17-mile commute to the heart of the bustling city centre. The village offers picture-perfect landscapes nestled between the Eddleston Water and Longcote Burn offering delightful country walks, as well as a recently completed, multi-use walking and cycle path from Eddleston to Peebles. With good primary schools and secondary school a short bus ride away in Peebles, the village itself has a church, a community run village hall (hosting events throughout the year), and a village pub and restaurant. The nearby Barony Castle offers a restaurant, bar, and lounge with accommodation and full spa facilities. A short drive will take you to the bustling historic market town of Peebles. A real destination for shopping, arts, and culture, the town a wide range of independent shops and business, which are supplemented with a select few high-street stores and supermarkets. There is no shortage of everyday essentials, including banks, pharmacies, and a post office, plus a choice of restaurants, bars and cafés. Peebles also hosts a varied programme of cultural events and attractions all year round, with the main venue being the Eastgate Theatre & Arts Centre. Eddleston's location on the A703 makes commuting to Edinburgh City Bypass and Peebles, fast and convenient.

Floorplan



Property Department
15 Eastgate, Peebles, EH45 8AD
Tel: 01721 721515 | Email: property@blackwoodsmith.com | www.blackwoodsmith.com

Whilst care has been taken to prepare this brochure the text, photographs and plans contained within are for guidance only and are not to be treated as representations of fact. The terms do not form part of any offer or contract. The measurements are taken at the widest points and are approximate, the floor plan may not be drawn to scale. None of the systems or appliances have been tested and no warranty is given as to their order or condition. Prospective purchasers are advised to make their own investigations prior to making any offer for the property. Blackwood & Smith will not be responsible for any expenses incurred by prospective purchasers in inspecting properties which have been sold, let or withdrawn



Blackwood & Smith LLP
SOLICITORS AND ESTATE AGENTS