



71 Greenfarm Road, Newton Mearns G77 6RH

www.nicolestateagents.co.uk



Nicol Estate Agents



Nicol Estate Agents

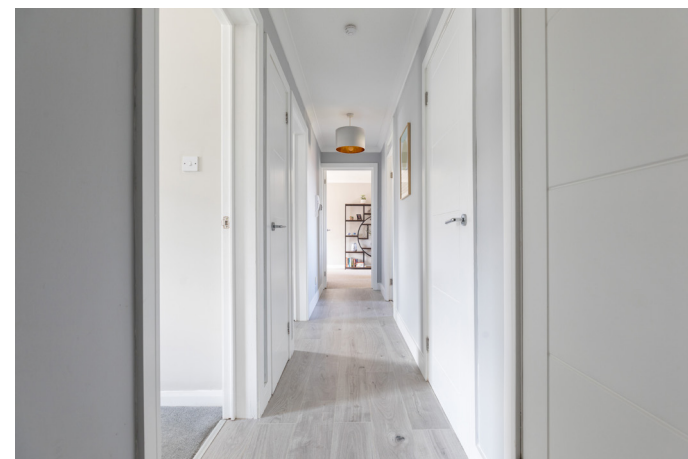
Situation

A hugely popular suburb, Newton Mearns is a welcoming, family friendly town, with a fantastic, lively and inclusive community. If you choose to live in Newton Mearns, you will have access to some of Scotland's highest attaining primary and secondary schools, including Eastwood High and St. Ninian's High Schools.

Newton Mearns is located approximately 9 miles from Glasgow City Centre. Commuter routes are served by the M77, M8 and Glasgow Southern Orbital motorways which also provide 30 minute journey times to both Glasgow and Prestwick International Airports. There are regular train and bus services to Glasgow, East Kilbride and the beautiful Ayrshire coast.

Recognised as providing amongst the highest standards of local amenities, Newton Mearns offers an array of healthcare centres, banks and libraries and a broad range of supermarkets, boutique shops and restaurants, including The Avenue Shopping Centre. Only a short distance away is the Greenlaw Retail Park which includes Waitrose, Tesco Metro, Aldi and a wide range of bars and restaurants. Silverburn shopping centre is only a short drive from the property.

Local sports and recreational facilities include David Lloyd's, Parklands Country Club, Williamwood and Whitecraigs Golf Clubs, several private bowling clubs and Whitecraigs tennis and rugby club, as well as East Renfrewshire Council's own excellent sports and leisure facilities at Eastwood Toll.









Nicol Estate Agents

Property Description

A well presented two bedroom top floor flat with an allocated parking space, conveniently located for local amenities, transport links and popular East Renfrewshire schools.

The accommodation comprises:

Security door entry. Warm welcoming reception allowing access to all other apartments Sitting/ dining room with dual aspect windows. Well appointed kitchen with a full complement of floor and wall mounted cabinets and complementary worktop surfaces. Two double bedrooms with fitted wardrobes and a modern refitted bathroom.

The property is further complemented by gas central heating, double glazing, well kept private gardens and allocated resident parking space to the rear.

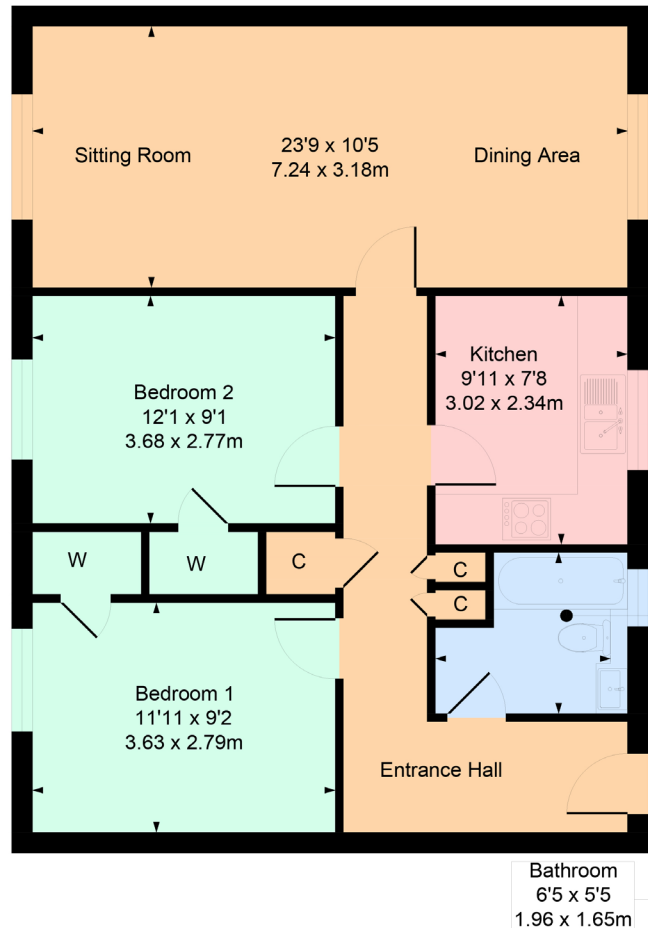
www.nicolestateagents.co.uk





71 Greenfarm Road, Newton Mearns

Approximate Gross Internal Area 764 sq ft - 70.97 sq m



SKETCH PLAN FOR ILLUSTRATIVE PURPOSES ONLY All measurements, walls, doors, windows, fitting and appliances, their sizes and locations are approximate only. They cannot be regarded as being a representation by the seller, nor their agent. We believe these details to be accurate however it is not guaranteed and they do not form any part of a contract. Fixtures and fittings are not included unless specified in the enclosed. Photographs are for general information and it must not be inferred that any item is included for sale with the property.



Nicol Estate Agents

Viewing

By appointment through
Nicol Estate Agents
Newton Mearns

Outgoings

East Renfrewshire Council
Band D

Fixtures & Fittings

Only items specifically mentioned in the sale particulars are included in the sale price.

Energy Efficiency Rating

Band C

Services

The property will be supplied by mains water, gas and electricity. Gas central heating.

Local Authority

East Renfrewshire Council
Council headquarters
Eastwood Park
Rouken Glen Road
Giffnock G46 6UG
Tel: (0141) 577 3000

Property Reference

3378