



8 Craig Place, Newton Mearns, Glasgow G77 6PA

www.nicolestateagents.co.uk



Nicol Estate Agents



Nicol Estate Agents

Situation

Craig Place, positioned off Barrhead Road, is a popular and sought after location within Newton Mearns and is extremely well positioned for amenities within the surrounding district.

A hugely popular suburb, Newton Mearns is located approximately 9 miles from Glasgow City Centre. Commuter routes are served by the M77, M8 and Glasgow Orbital motorways which also provide 30 minute journey times to both Glasgow and Prestwick international airports. There are regular train and bus services to Glasgow, East Kilbride and the Ayrshire coast.

Newton Mearns is recognised as providing amongst the highest standards of local amenities including healthcare centres, banks and libraries and a broad range of supermarkets, boutique shops and restaurants. Local sports and recreational facilities include Parklands Country Club, Cathcart, Williamwood and Whitecraigs Golf Clubs, a number of private bowling and tennis clubs, and East Renfrewshire Council's own excellent sports and leisure facilities at Eastwood Toll.

Craig Place is conveniently located for access to The Avenue shopping centre and Waitrose at Greenlaw Village Retail Park.

For those with young families, the property sits within the catchment area for some of Scotland's highest attaining primary and secondary schools, including the new state of the art Eastwood High School and is within easy reach of the private Belmont House School and a number of school-run pick-up points for private schools in Glasgow.









Nicol Estate Agents

Property Description

A well presented three bedroom mid terrace villa, well maintained and upgraded by present owners.

Internally the property provides flexible accommodation formed over two levels and comprises:

Ground Floor: Spacious and well presented sitting room. Well appointed refitted kitchen and dining room, with a range of wall mounted and floor standing units, complementary worktop surfaces and space for dining table and chairs. French doors opening to a southerly facing garden.

Upper Floor: Landing. Bedroom one with fitted wardrobe. Bedroom two with fitted wardrobe. Bedroom three with storage cupboard. The refitted house bathroom completes the accommodation.

The property is further complimented by gas central heating and double glazing. Well tended landscaped gardens, enclosed southerly facing rear garden, ideal for entertaining and two bay driveway.

www.nicolestateagents.co.uk



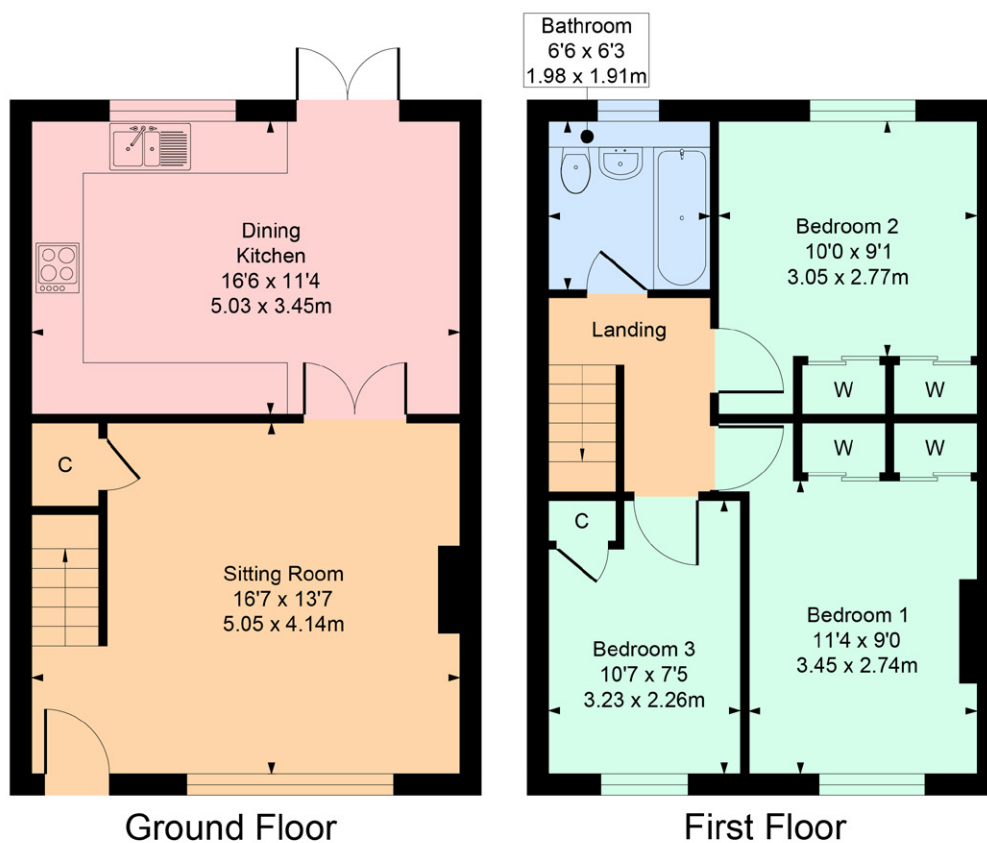




8 Craig Place, Newton Mearns

Approximate Gross Internal Area

837 sq ft - 77.75 sq m



SKETCH PLAN FOR ILLUSTRATIVE PURPOSES ONLY All measurements, walls, doors, windows, fitting and appliances, their sizes and locations are approximate only. They cannot be regarded as being a representation by the seller, nor their agent. We believe these details to be accurate however it is not guaranteed and they do not form any part of a contract. Fixtures and fittings are not included unless specified in the enclosed. Photographs are for general information and it must not be inferred that any item is included for sale with the property.



Nicol Estate Agents

Viewing

By appointment through
Nicol Estate Agents
Newton Mearns

Outgoings

East Renfrewshire Council
Band D

Fixtures & Fittings

Only items specifically mentioned in the sale particulars are included in the sale price.

Energy Efficiency Rating

Band C

Services

The property will be supplied by mains water, gas and electricity. Gas central heating.

Local Authority

East Renfrewshire Council
Council headquarters
Eastwood Park
Rouken Glen Road
Giffnock G46 6UG
Tel: (0141) 577 3000

Property Reference

3404

46 Ayr Road, Newton Mearns, Glasgow G46 6SA | 0141 616 3960 | fax 0141 258 2761 | mail@nicolestateagents.co.uk

1 Helena Place, Busby Road, Clarkston, G78 7RB | 0141 638 4541 | fax 0141 258 2761 | clarkston@nicolestateagents.co.uk



www.nicolestateagents.co.uk