

Stone Meadow, Oxford



2 Bedrooms



1 Bathroom



1 Reception

£425,000



Description

Welcome to this beautifully presented two-bedroom ground floor apartment situated in the sought-after Stone Meadow development in Summertown, North Oxford.

Perfectly positioned in central North Oxford just a short distance from Oxford City centre, this modern home offers the ideal blend of contemporary living and village charm.

Upon entering, you are greeted by a spacious sitting and dining room, which seamlessly flows into an open-plan kitchen.

The apartment boasts two generously sized bedrooms, both filled with natural light, offering a serene retreat from the bustle of everyday life. The modern family bathroom is tastefully appointed, combining style and functionality with a sleek finish.

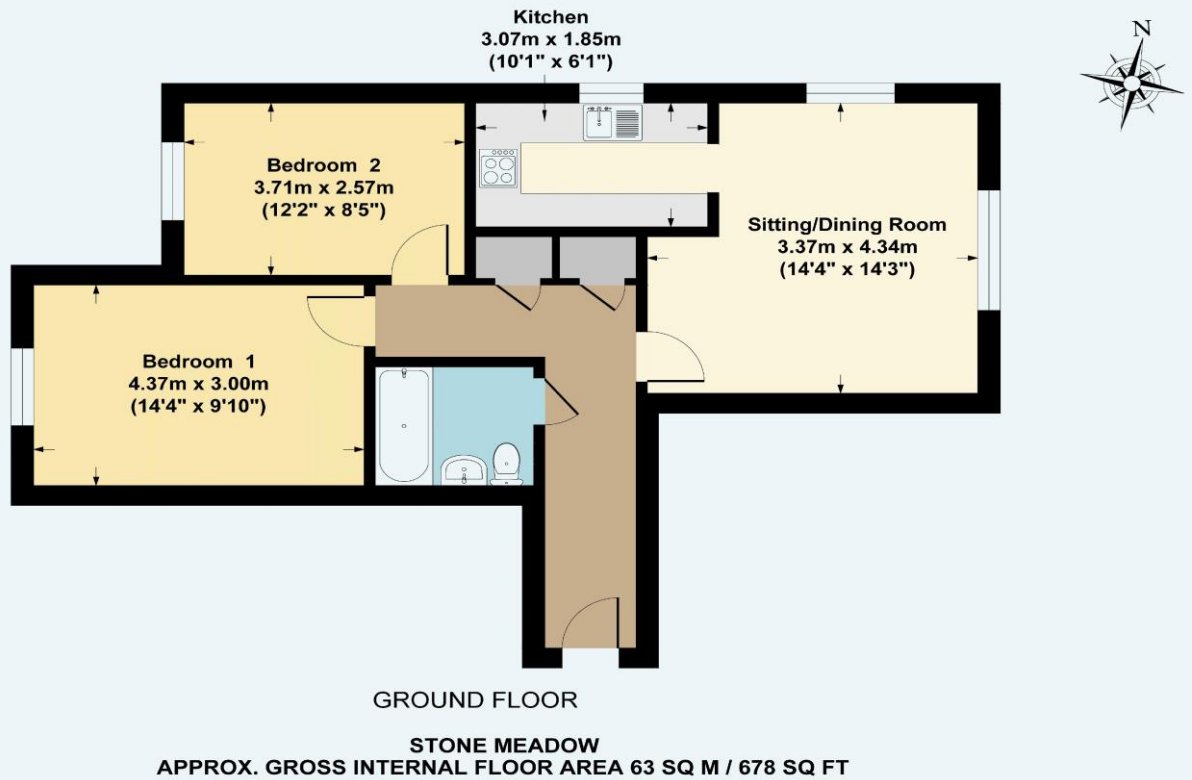
In addition there is an allocated parking space, and access to a bike store.

Residents of Stone Meadow benefit from the tranquillity of a suburban setting while enjoying excellent transport links to Oxford City Centre and beyond. With green spaces nearby and local amenities just a stone's throw away, this apartment is an exceptional opportunity for those seeking a stylish and convenient lifestyle.



- Walking Distance to Summertown and City Centre
- Two Generous Bedrooms
- Sought-After Development
- Stylish & Convenient
- Open-Plan Living

Floorplan



Additional Information

EPC

The current EPC rating for this property is C. Please contact us if you require a copy of the full EPC.

Council Tax

The Property is in council tax band D.

Viewings

Viewings on this property are strictly through Alistair Redhouse Property Partners.

Handling Agent

Alistair Redhouse is the Property Partner looking after the sale of this property and he is working closely with the seller to ensure that they are the best person to answer your questions and to discuss your interest. You can contact Alistair directly on the details on the next page and he will be happy to help.

Opening Hours

The offices of Alistair Redhouse are open 09.00-18.00 Monday to Friday and Saturday 09.00-17.00.

Alistair Redhouse

Direct Dial: 01865 593301

Alistair.Redhouse@ARPropertyPartners.co.uk



Whilst all statements contained in this brochure are believed to be correct, they are not to be regarded as statements or representations of fact and neither the selling agents nor sellers guarantee their accuracy.

The artist's impressions, photos, floor plans and other information are intended as a general guide only to the appearance and layout of the property.

However, it may be necessary, and rights are reserved to make changes to the appearance, layout and specification at any time without formal notice. Dimensions are approximate. This brochure and statements contained therein do not form any part of an offer or contract.



ALISTAIR REDHOUSE

PROPERTY PARTNERS